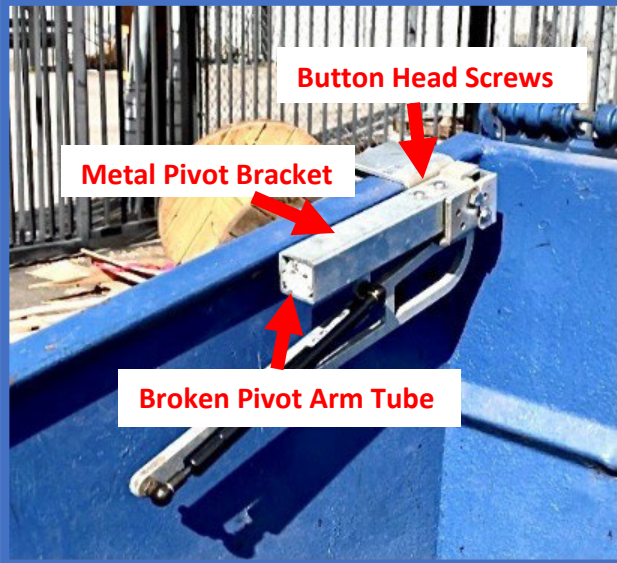
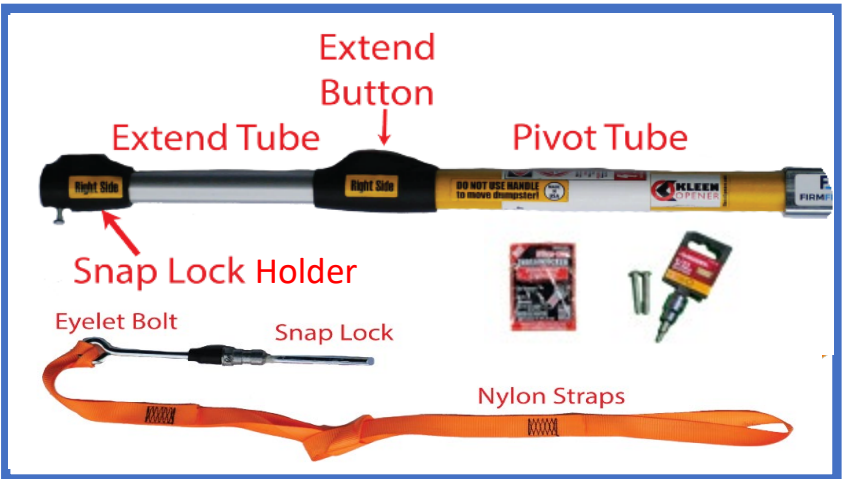


Pivot Arm Tube Kit Parts List:

- Pivot Tube with Snap Lock Holder
- Eyelet Bolt with Snap Lock
- 2 Pull Down Straps,
- Thread Locker
- 2 extra 5/32" Allen Button Head Bolts with 1/4" threads x 1 1/2" long
- 5/32" Allen Head Tool for 3/8" drive



Remove 2 Button Head Screws with 5/32 Allen Head Socket and 3/8 Drive Ratchet that came with Kleen Opener Installation Kit



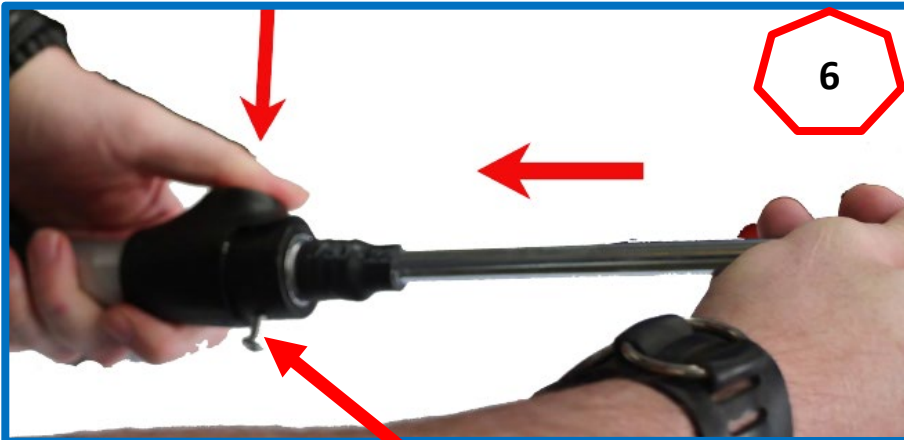
Remove & Discard broken Pivot Arm Tube & keep Button Head Bolts. 2 extras (if needed) are in shipment.



Before inserting the Eyelet Bolt into the Snap Lock Holder verify the Serial Number on the Eyelet Bolt matches the Serial Number located on the Pivot Tube.



Be sure to Align Snap Lock Holder's drilled hole with Snap Lock Set Screw. Then begin to insert Snap Lock into the Snap Lock Holder.



6

Press down the Red Button on Snap Lock Holder and insert Snap Lock with Eyelet Bolt into Snap Lock Holder.

Once Snap Lock is fully inserted into the Snap Lock Holder, release the Red Button, and listen for clicking sound. Verify the Snap Lock is fully seated in Snap Lock Holder by pulling on the Eyelet Bolt.

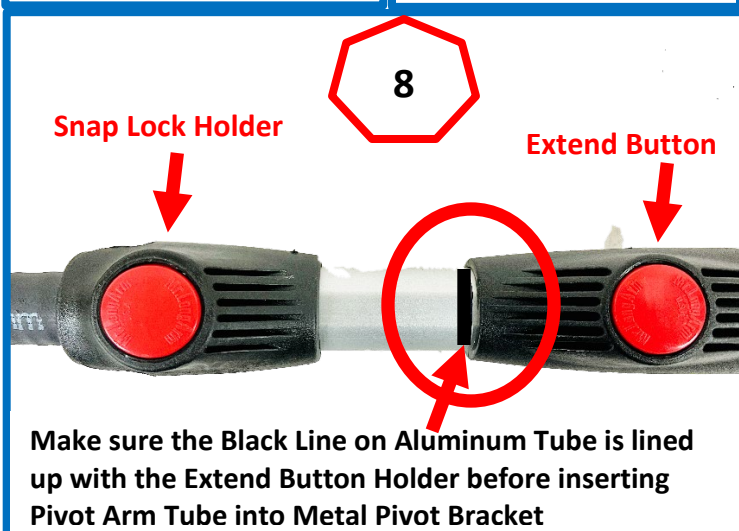


Remove partially inserted Snap Lock Set Screw from Snap Lock Holder and apply a drop of Threadlocker to first 5 threads of the Snap Lock Set Screw. After applying the Threadlocker, Insert the Snap Lock Set Screw back into the Snap Lock Holder.

7

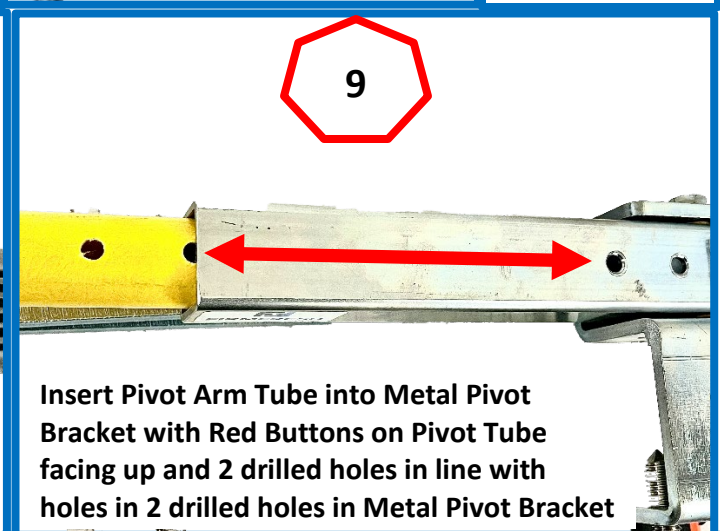


Use Phillips Screwdriver to screw Snap Lock Set Screw into Snap Lock Holder. Tighten until Snap Lock is fully and snugly inserted into the Snap Lock Holder



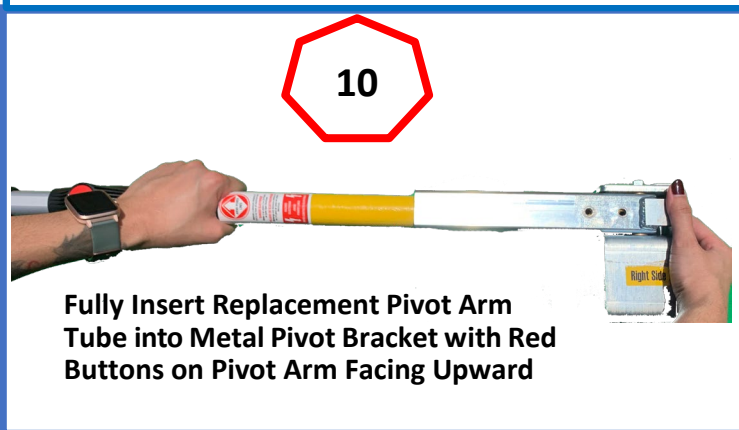
8

Make sure the Black Line on Aluminum Tube is lined up with the Extend Button Holder before inserting Pivot Arm Tube into Metal Pivot Bracket



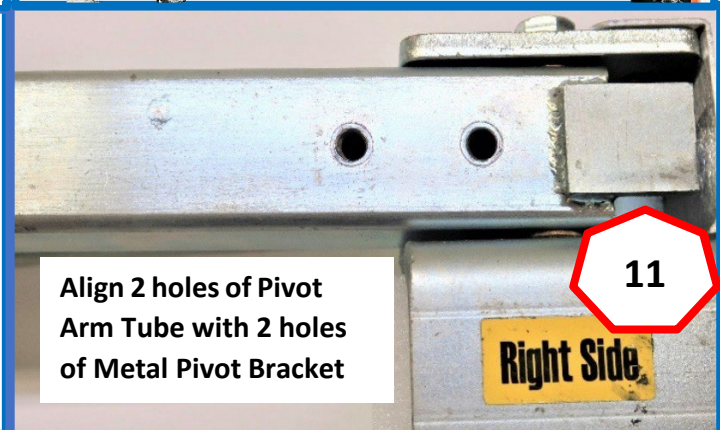
9

Insert Pivot Arm Tube into Metal Pivot Bracket with Red Buttons on Pivot Tube facing up and 2 drilled holes in line with holes in 2 drilled holes in Metal Pivot Bracket



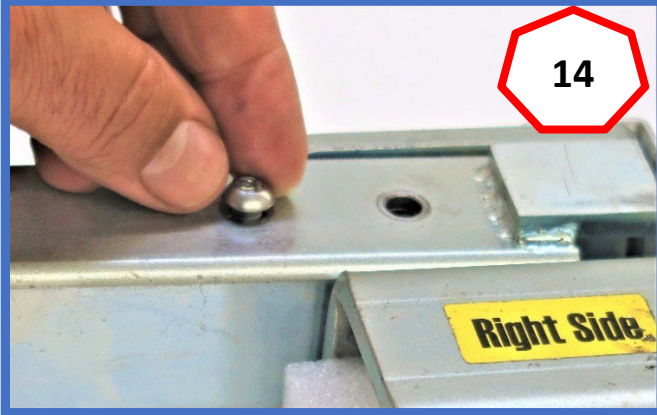
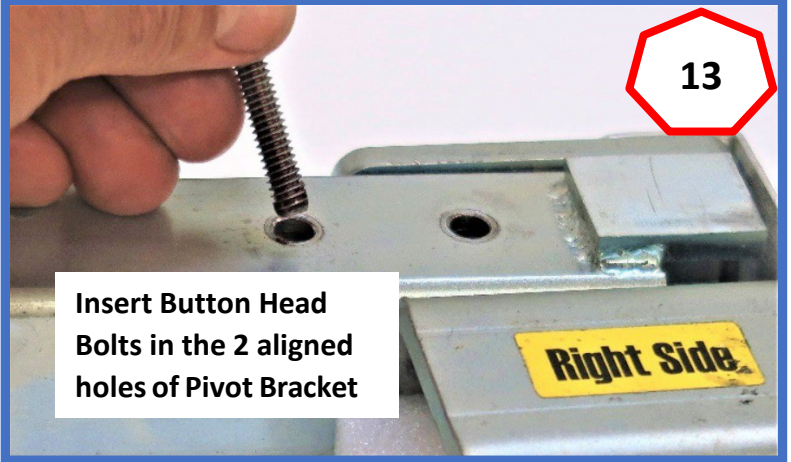
10

Fully Insert Replacement Pivot Arm Tube into Metal Pivot Bracket with Red Buttons on Pivot Arm Facing Upward



11

Align 2 holes of Pivot Arm Tube with 2 holes of Metal Pivot Bracket



Start first threads by hand to verify threads are properly seated with female thread of Metal Pivot Bracket

