

# **KLEEN** OPENER

## Installation Manual

 **PLAY VIDEO**



*Scan Me*



# **Read instructions carefully before assembling and installing**

*Use caution when handling the Kleen Opener during unpacking, assembly, and installation. Kleen Opener has metal edges that can cause harm.*

*Misuse of this product can cause breakage and/or personal harm.*

**DO NOT USE KLEEN OPENER TO MOVE DUMPSTER**

*For questions or comments please call us at:*

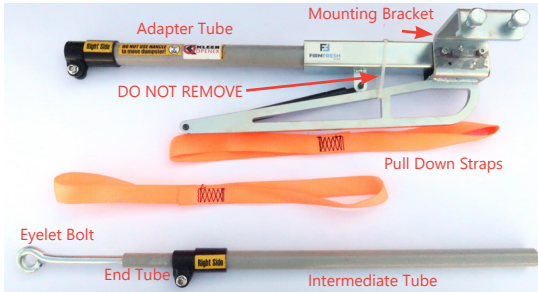
**1-(818)-280-3907**

*or E-Mail Us at:*

**owner@firmfresh.com**



# Components Shipped With Kleen Opener Kits



This manual uses a Right Side kit as an example. All information and steps apply to Left Side kits as well.

When shipped the Kleen Opener is partially disassembled.

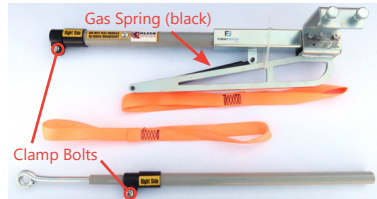
Your Right Side kit comes with three tubes - the larger adapter tube attached to the mounting bracket, the intermediate tube, and the end tube with the eyelet bolt.

Each kit comes with two orange pull down straps.

Make sure your kit(s) come with coordinating left vs right side tubes. Tubes are labeled accordingly.

## DO NOT REMOVE THE NYLON TIE UNTIL INSTRUCTED

For your safety leave the nylon tie attached to the mounting bracket. This holds the gas spring and arm in place while you mount. Removing the tie before instructed can lead to injury.



Other components to note are the clamp bolts and gas spring.

Extras Included with the Kleen Opener Kit:

- Threadlocker
- 2 extra orange pull down straps for a longer reach
- Bag of Extras:
  - four 1/4" x 1" Clamp Bolts
  - four longer 1/2" x 1 3/4" Mounting Bolts
  - four Nylon Lock Nuts with Flange

TOOLS NEEDED FOR INSTALLATION *not included*

(These items come in our Installation Tool Kit for purchase on [kleenopener.com](http://kleenopener.com))

- 3/8 in. ratchet
- 3/4 in. socket
- 7/16 in. socket



# General Installation: Assembling the Arm

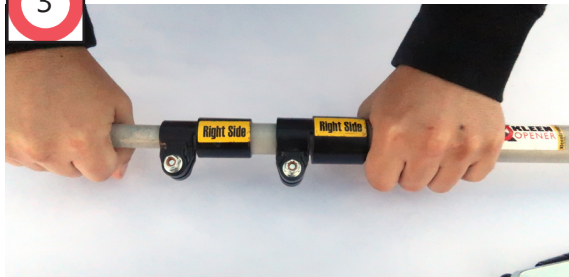
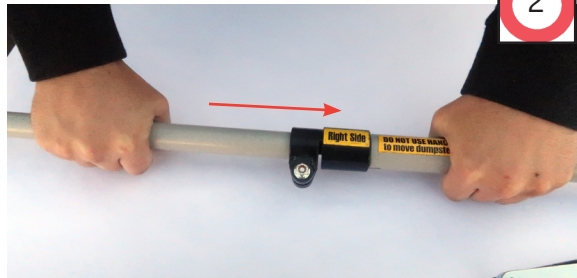


Take the larger adapter tube and the intermediate tube.

Make sure they are both labeled Right Side (or Left Side when mounting for the left side dumpster)



Simply slide the intermediate tube into the adapter tube.



Insert intermediate tube until the clamp bolts meet with a small gap as shown.

Do not tighten clamp bolts until instructed.



# General Installation: Mounting the Bracket

First make sure you are on the correct side of the dumpster. Left Side and Right Side are determined when facing the front of the dumpster.

Manually open the lid before installation.



**This manual shows a general installation with a metal angled mount. There are four different mount types based on dumpster material and configuration. To find mount specific instructions to match your dumpster see pages 11-13.**



Now it is time to mount your Kleen Opener.

First place the mounting bracket on the dumpster top rail. The arm should be inside the dumpster with the mounting bolts on the outside as shown.

It is easiest to hold the Kleen Opener with your left hand.

Make sure the bracket is resting flat against the top rail.

The mounting bracket should be placed anywhere from 1/2 inch up to 8 inches from the back rail of the dumpster where the hinge of the lid is located.

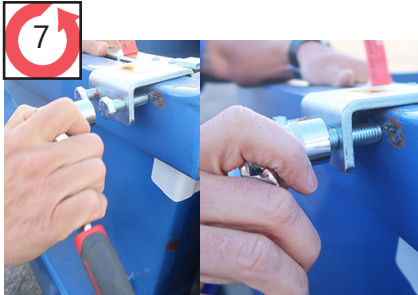
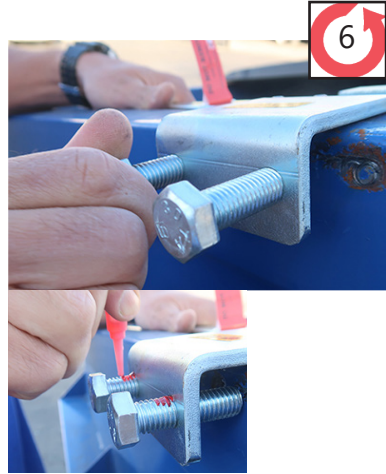
Smaller dumpsters can mount between 1/2 in to 4 inches from the back rail. For larger dumpsters with long lids, mount between 4 to 8 inches from the back rail.



## General Installation: Mounting the Bracket

First hand tighten the mounting bolts to steady the Kleen Opener on the top rail.

Then put a couple of drops of Threadlocker on the mounting bolt as shown.

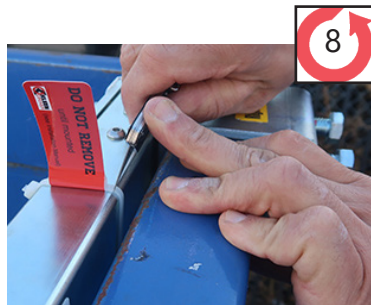


Use the 3/4 in. socket on the ratchet to tighten the mounting bolts.

Alternate between each bolt as you tighten.

Turn until both bolts are FIRM and SNUG.

**YOU CAN NOW SAFELY REMOVE THE  
NYLON TIE**  
with cutting tool, scissors, or wire  
cutters (not provided)



## General Installation: Adjusting Arm Length

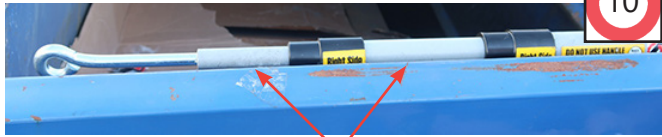
9



Now it is time to adjust the length of the arm.

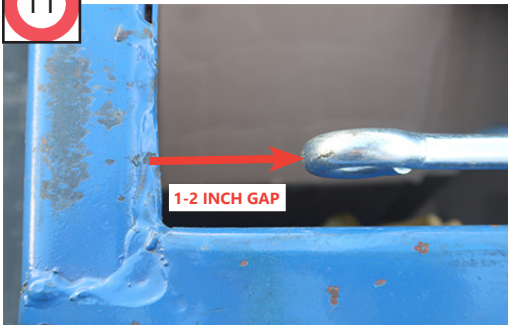
Pull on the intermediate tube and end tube with eyelet bolt to slide out arms.

10



Adjust the tubes so they are evenly spaced.

11



Leave at least a 1-2 inch gap between the end of the eyelet bolt and the front rail.

The eyelet bolt should be facing up and down, meaning you would not see the open circle when looking from above (as seen to the left)



## General Installation: Secure Arm Length

Next you will secure the length of the arm.

Use the 7/16 in. socket on the ratchet.

First raise the arm slightly while holding in place. Use caution as the gas spring will want to raise the arm automatically.



Use the ratchet (with 7/16 in. socket) to tighten the clamp bolts.

Make sure to tighten until the gap closes.

Use the ratchet to secure both clamp bolts. Make sure the gap closes on each clamp bolt. Tighten until both bolts are secure and the intermediate and end tubes cannot be twisted or moved by hand.





## General Installation: Attach Straps



To attach the straps pull one end through the eyelet bolt to create a loop.

Pull the other end of the strap through the loop.



Pull the strap through until you see the knot form on the eyelet bolt.

For longer reach you can attach the extra strap to the first strap using this same process.



# **KLEEN** Operational Instructions **OPENER**



Pull up on the strap to lift the arm of the Kleen Opener. Then manually close the dumpster lid onto the arm. Pull down on the strap to close the lid.



To operate your Kleen Opener simply lift up the orange strap 6-8 inches until the gas spring arm takes over and lifts the lid open.



To close the dumpster lid pull down on the orange strap. Pull down until the dumpster's lid closes completely. Let go of the strap. Your dumpster lid will remain closed.



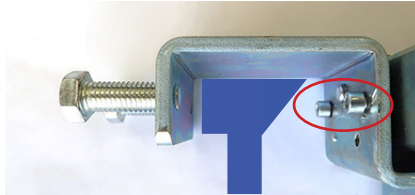
## Mount Specific Instructions

### Mount #1: Metal Angled



This mounting bracket is featured in the General Installation instructions in this manual.

Mounting Bracket



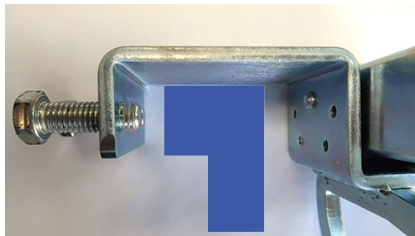
Mount specific things to note are the two round head bolts on the inside of the bracket. They go under the inside of the angled top rail. These round head bolts help secure the mount on the angled inside of your metal dumpster.

### Mount #2: Metal Flat



This mounting bracket is for metal dumpsters with a flat interior wall.

Mounting Bracket



This mount does not have the added round head bolts on the inside of the bracket. This does not affect installation.

Installation process is exactly as described in the manual's General Installation instructions.



# Mount Specific Instructions

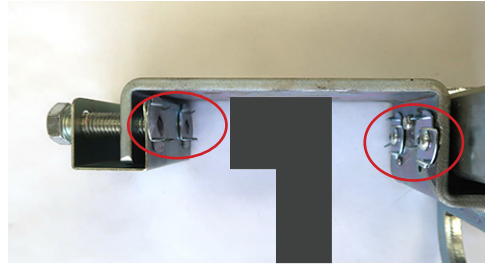
## Mount #3: Plastic Flat

Dumpster Top Rail



This mounting bracket is for plastic dumpsters with a flat interior wall.

Mounting Bracket



This bracket includes 4 torque washers. Each torque washer has 4 tiny sharp prongs which are necessary for mounting and securing the bracket onto plastic dumpsters.



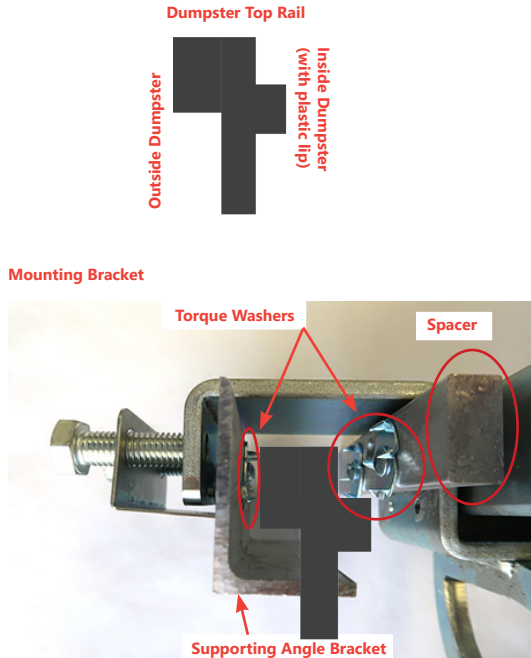
Step 5: For plastic dumpsters mount the bracket 6-12 inches from the back hinge of the dumpster's plastic lid depending on how high you want the lid to open. Mounting closer to the back hinge of the dumpster will raise the lid higher.



CLOSE GAP

Step 7: Tighten 1/2" bolts snug with the ratchet and 3/4" socket until the inside and outside gaps created by the torque washers are closed and the 4 tiny prongs on each torque washer has seated into the inner and outer walls of the plastic dumpster. This allows the torque washers' prongs to properly pierce the inner and outer walls of the plastic dumpster, allowing the bracket to securely mount to the plastic dumpster.

## Mount #4: Plastic Lip



This mount is for plastic dumpsters with an inner lip.

This bracket includes 3 torque washers, a spacer, and a supporting angle bracket (L-shaped attachment).

Each torque washer has 4 tiny sharp prongs which are necessary for mounting and securing the bracket onto plastic dumpsters.

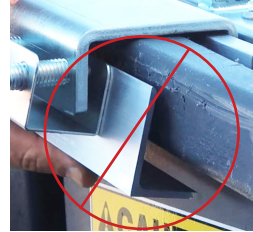


Step 5: For plastic dumpsters mount the bracket 6-12 inches from the back hinge of the dumpster's plastic lid depending on how high you want the lid to open. Mounting closer to the back hinge of the dumpster will raise the lid higher.

*continued on page 14*

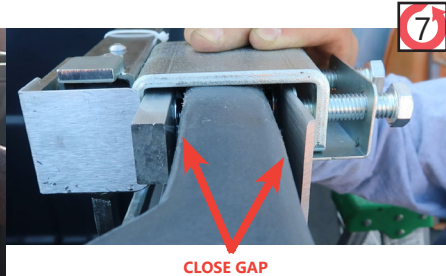
## Mount #4: Plastic Lip (continued)

6



Step 6: The L-shaped supporting angle bracket needs to rest flush against the bottom of the outer lip. Make sure to hold the supporting angle bracket in place while you manually tighten the bolts.

You **DO NOT** want to see a gap between the dumpster lip and the bottom of the supporting angle bracket.



Step 7: Hold the supporting angle bracket in place (You may need another person to hold the arm steady while you support the bracket). Tighten the 1/2" bolts snug with the ratchet and 3/4" socket until the inside and outside gaps created by the torque washers are closed and the 4 tiny prongs on each torque washer has seated into the inner and outer walls of the plastic dumpster. This allows the torque washers' prongs to properly pierce the inner and outer walls of the plastic dumpster, allowing the bracket to securely mount to the plastic dumpster.

*Have installation questions?*

*Scan the code on the front cover to watch our  
Installation Video, or head over to  
[www.kleenopener.com/installation](http://www.kleenopener.com/installation)  
to view video.*

*Still have questions or comments?*

*Please call us at:  
**1-(818)-280-3907**  
or E-Mail Us at:  
**[owner@firmfresh.com](mailto:owner@firmfresh.com)***



