



AX1800 4-Stream Dual Band Wi-Fi 6 Router

Next-Gen Wi-Fi for More Devices



Archer AX20



Next-Gen Faster Wi-Fi 6
Speeds up to 1.8 Gbps[†]



Take full advantages of broad-
band speeds up to 1 Gbps[△]



Refined Password Security
with WPA3 Protocol*



Works with all internet
service providers**

Highlights

Wi-Fi 6 Upgrade Everything with Wi-Fi 6

The Archer AX20, based on the next generation 802.11ax Wi-Fi technology, takes your Wi-Fi to the next level while being backwards compatible with 802.11a/b/g/n/ac Wi-Fi standards.



Next-Gen Wi-Fi Speeds

Enjoy a faster and more stable network for streaming and gaming with lower latency and speeds up to 1.8 Gbps using newer mobile devices.[†]



Refined Security

The latest Wi-Fi security protocol, WPA3, keeps you safe by enhancing protection against brute-force attacks and reinforcing Wi-Fi password safety.*



Backwards Compatible

Take your WiFi to the next level while being backwards compatible with existing 802.11a/b/g/n/ac Wi-Fi standards.

Boost Coverage for Non-stop Entertainment

Four high-gain antennas and Beamforming transmit Wi-Fi signals to every corner of your home and concentrate signals strength towards connected devices. Wi-Fi 6 adjusts the bandwidth of sub-channels, making signals clearer and ensuring larger coverage.[†]



Highlights

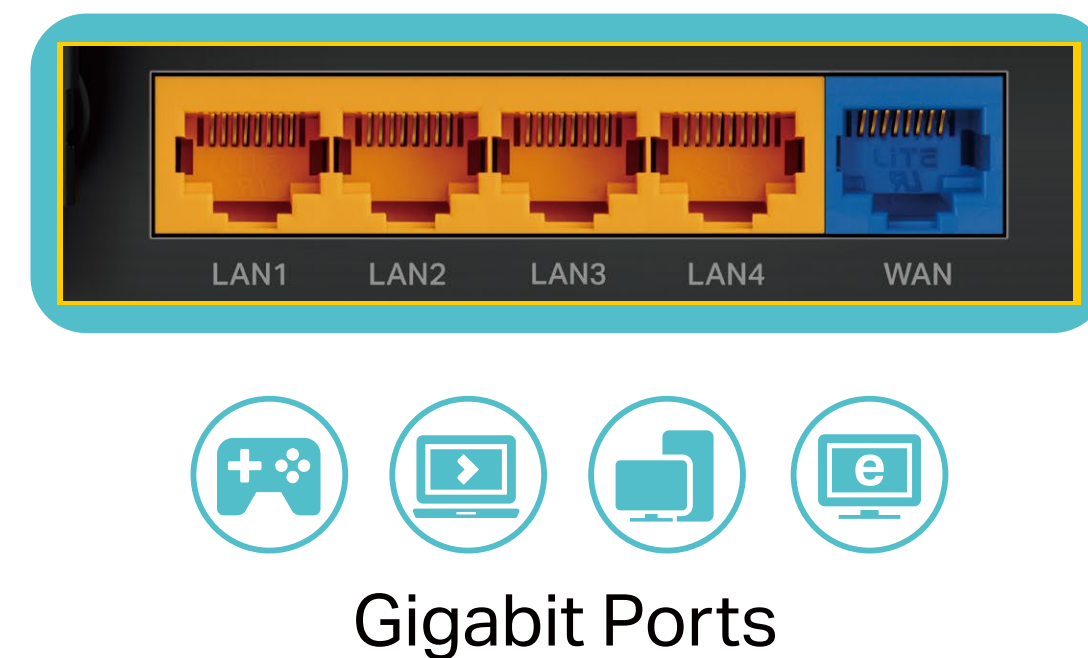
Versatile Management

Block inappropriate content and set daily limits for the total time children/staff spend online through Parental Controls. Guest Network creates a separate access point for guests, to ensure your privacy is secure.



Gigabit Internet Access

Take full advantage of your broadband with speed up to 1 Gbps with a Gigabit WAN port. Plug your PCs, smart TVs and game consoles into one of the four Gigabit LAN ports for fast and reliable wired connections.[^]

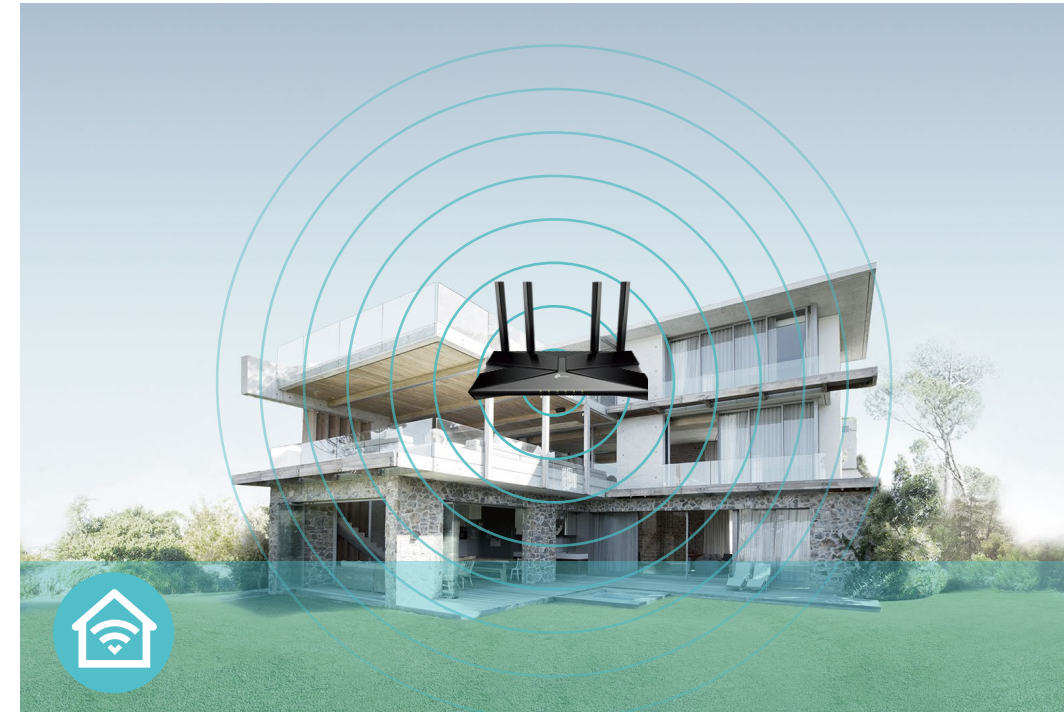


Features



Speed

- **Wi-Fi 6 Technology** – The new era of Wi-Fi with speeds up to 1.8 Gbps[†]
- **Next-Gen Wireless Speed** – 574 Mbps on 2.4 GHz (802.11ax) + 1201 Mbps on 5 GHz (802.11ax)[†]



Wi-Fi Range

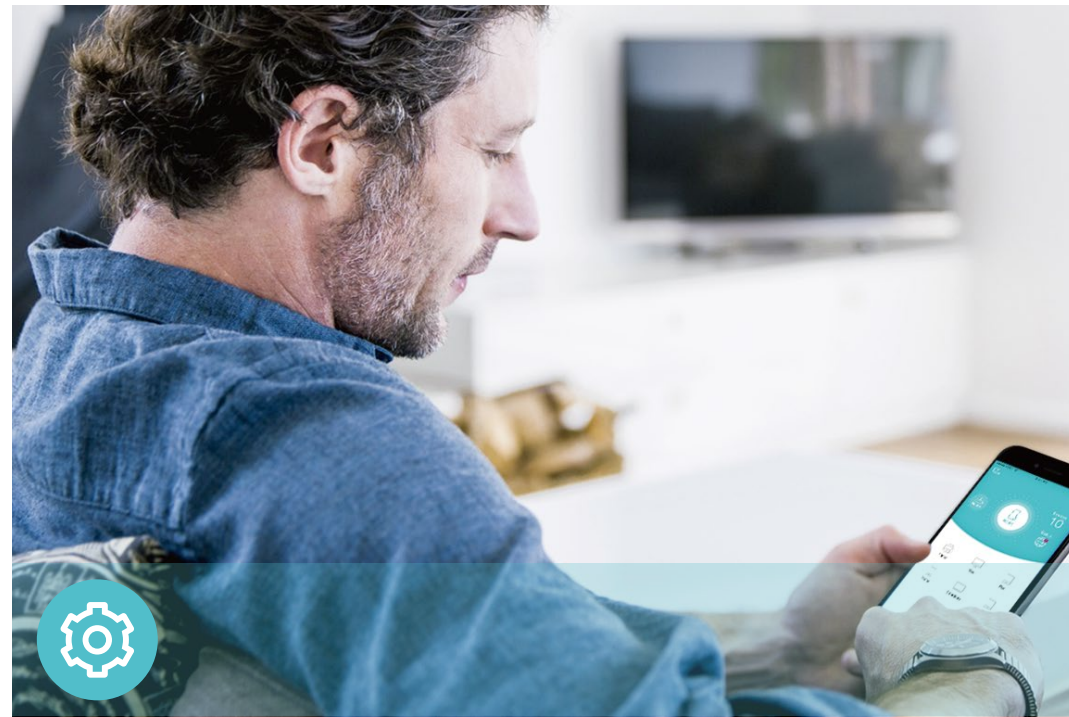
- **Ultimate Range Wi-Fi** – Four high-gain external antennas deliver a Wi-Fi signal to every corner of your home, making all of your connections more efficient and stable
- **Beamforming Technology** – Concentrates Wi-Fi signals towards individual devices to ensure stronger connections
- **Seamless OneMesh network** – Transfer between signals without any drops or lag and manage your whole network using a centralized panel



Reliability

- **Secure VPN Access** – Connects to a private network with a safe and secure OpenVPN and PPTP VPN connection
- **Airtime Fairness** – Balances bandwidth of connected devices to improve overall throughput and efficiency
- **Smart Connect** – Intelligently switches each device's connection to the optimum available Wi-Fi band

Features



Ease of Use

- Intuitive Web UI – Ensures quick and simple installation without hassle
- WPS (Wi-Fi Protected Setup) – Help you to quickly and securely connect your devices to the router's network with a tap
- Easy On/Off – Turn on/off wireless radio using the Wi-Fi button.
- Power On/Off – Conveniently power on or off your router as required
- Hassle-free Management with Tether App – Network management is made easy with the TP-Link Tether app, available on any Android and iOS device



Security

- Parental Controls – Manage when and how connected devices can access the internet
- Guest Network – Provides separate access for guests to secure the home network
- Access Control – Establishes a whitelist or blacklist to allow or restrict certain devices to access the internet
- Encryptions for Secure Network – WPA/WPA2, WPA2/WPA3 encryptions provide active protection against security threats

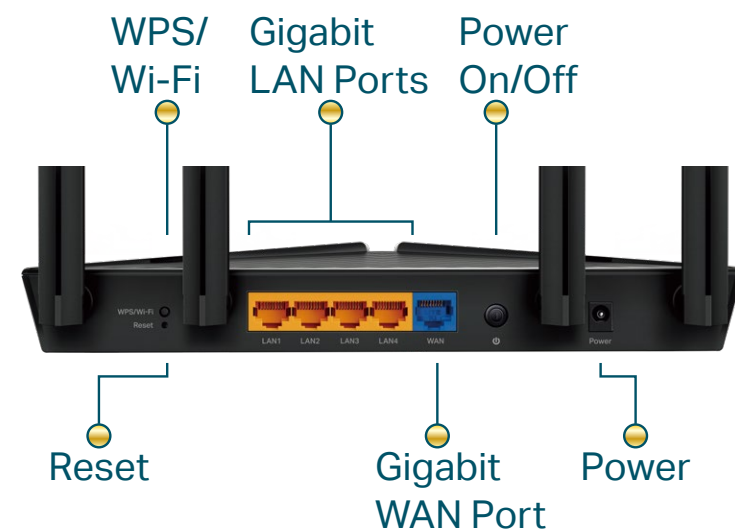
Specifications

Wireless

- Standards: IEEE 802.11ax/ac/n/a 5 GHz, IEEE 802.11ax/n/b/g 2.4 GHz
- WiFi Speeds: 5 GHz: 1201 Mbps (802.11ax), 2.4 GHz: 574 Mbps (802.11ax)
- WiFi Range: 4 High-Performance Antennas, Beamforming
- WiFi Capacity: Dual-Band, Airtime Fairness, 4 Streams
- Working Modes: Router Mode, Access Point Mode

Hardware

- Ethernet Ports: 1× Gigabit WAN Port, 4× Gigabit LAN Ports
- Buttons: WPS/Wi-Fi Button, Reset Button, Power On/Off Button
- Power: 12 V/1.5 A



Security

- WiFi Encryption: WPA, WPA2, WPA3, WPA/WPA2-Enterprise (802.1x)
- Network Security: SPI Firewall, Access Control, IP & MAC Binding, Application Layer Gateway
- Guest Network: 1× 5 GHz Guest Network, 1× 2.4 GHz Guest Network
- VPN Server: OpenVPN, PPTP

Software

- Protocols: IPv4, IPv6
- OneMesh: Supported
- Parental Controls: URL Filtering, Time Controls
- WAN Types: Dynamic IP, Static IP, PPPoE, PPTP, L2TP
- Quality of Service: QoS by Device
- Cloud Service: Auto Firmware Upgrade, OTA Firmware Upgrade, TP-Link ID, DDNS
- NAT Forwarding: Port Forwarding, Port Triggering, DMZ, UPnP
- DDNS: TP-Link, NO-IP, DynDNS

Specifications

Physical

- Dimensions (W×D×H): 10.2 × 5.3 × 1.6 in (260.2 × 135 × 41.6 mm)
- Package Contents:
 - Wireless Router Archer AX20
 - Power Adapter
 - RJ45 Ethernet Cable
 - Quick Installation Guide

Other

- System Requirements:
 - Internet Explorer 11+, Firefox 12.0+, Chrome 20.0+, Safari 4.0+, or other JavaScript-enabled browser
 - Cable or DSL Modem (if needed)
 - Subscription with an internet service provider (for internet access)
- Certifications: FCC, CE, RoHS
- Environment:
 - Operating Temperature: 0°C~40°C (32°F ~104°F)
 - Operating Humidity: 10%~90% non-condensing



For more information, please visit

<https://www.tp-link.com/products/details/?model=Archer+AX20>

or scan the QR code left

*Maximum wireless signal rates are the physical rates derived from IEEE Standard 802.11 specifications. Actual wireless data throughput, wireless coverage and number of connected devices are not guaranteed and will vary as a result of network conditions, client limitations, and environmental factors, including building materials, obstacles, volume and density of traffic, and client location.

†Use of 802.11ax (Wi-Fi 6), and features including OFDMA and 1024-QAM requires clients to also support corresponding features.

‡The 802.11ax white paper defines standardized modifications to both the IEEE 802.11 physical layers (PHY) and the IEEE 802.11 Medium Access Control (MAC) layer as enabling at least one mode of operation capable of supporting improvement of at least four times the average throughput per station (measured at the MAC data service access point) in a dense deployment scenario.

^1,000 Mbps internet speeds require compatible service plans and equipment.

*Use of WPA3 requires clients to also support WPA3.

***This router may not support all the mandatory features as ratified in the IEEE 802.11AX specification.

****Further software upgrades for feature availability may be required.

*****A separate modem or gateway may be required. PPPoE, Static IP, and Dynamic IP are supported. PPTP and L2TP may also be supported under certain configurations.

©2023 TP-Link

Test Data

- WiFi Transmission Power:
 - CE: <20dBm(2.4 GHz), <23dBm(5.15 GHz~5.25 GHz)
 - FCC: <30dBm(2.4 GHz & 5.15 GHz~5.825 GHz)
- WiFi Reception Sensitivity:
 - 2.4GHz:
 - 11g 6Mbps: -96 dBm, 11a 54Mbps: -75 dBm, 11ac VHT20_MCS0: -95 dBm,
 - 11ac VHT20_MCS8: -72 dBm, 11ac VHT40_MCS0: -92 dBm, 11ac VHT40_MCS9: -67 dBm,
 - 11ax HE20_MCS0: -95 dBm, 11ax HE20_MCS11: -65 dBm, 11ax HE40_MCS0: -92 dBm,
 - 11ax HE40_MCS11: -62 dBm
 - 5GHz:
 - 11a 6Mbps: -96 dBm, 11a 54Mbps: -75 dBm, 11ac VHT20_MCS0: -95 dBm,
 - 11ac VHT20_MCS8: -71 dBm, 11ac VHT40_MCS0: -92 dBm, 11ac VHT40_MCS9: -66 dBm,
 - 11ac VHT80_MCS0: -89 dBm, 11ac VHT40_MCS9: -62 dBm, 11ax HE20_MCS0: -95 dBm,
 - 11ax HE20_MCS11: -64 dBm, 11ax HE40_MCS0: -92 dBm, 11ax HE40_MCS11: -60 dBm,
 - 11ax HE80_MCS0: -89 dBm, 11ax HE80_MCS11: -59 dBm