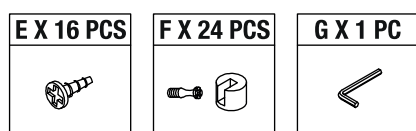
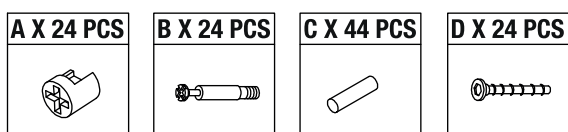
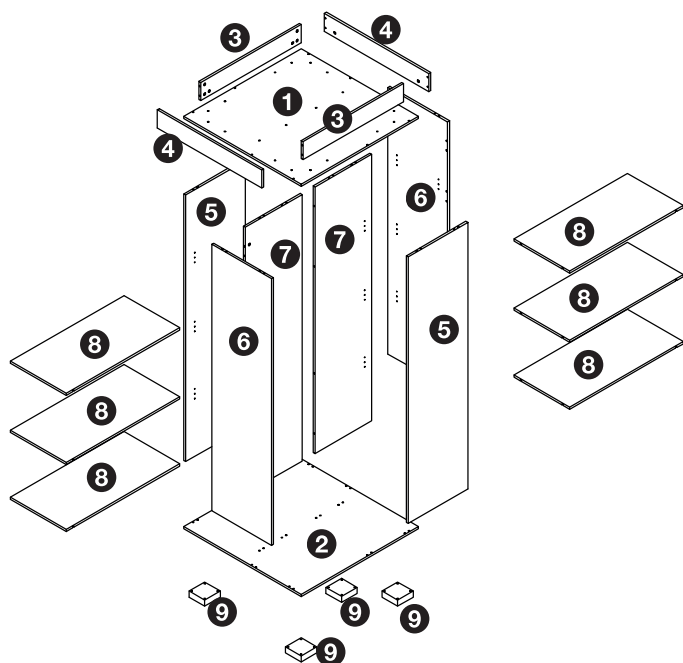
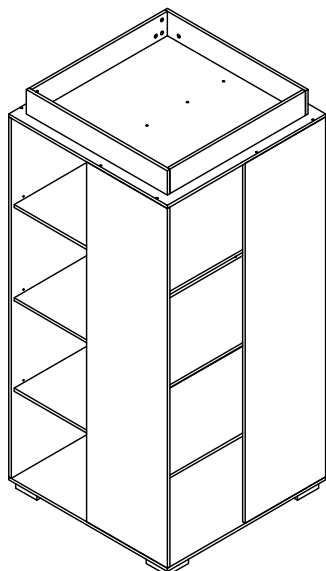


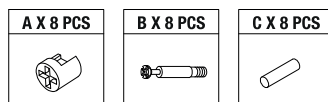
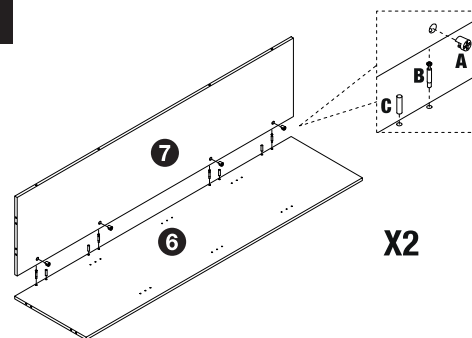
# NEXTIME

## MANUAL

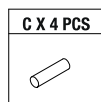
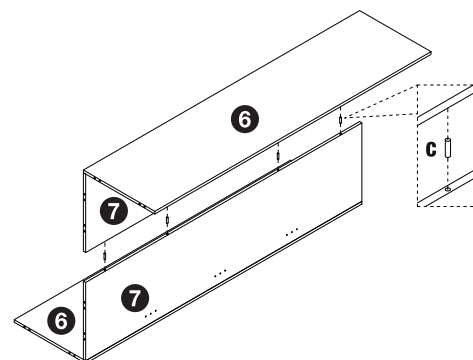
PWAR9035



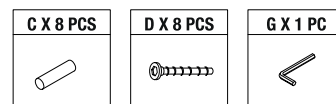
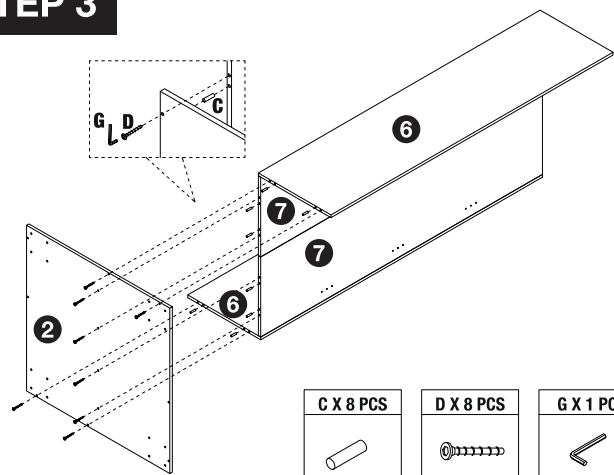
### STEP 1



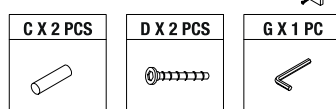
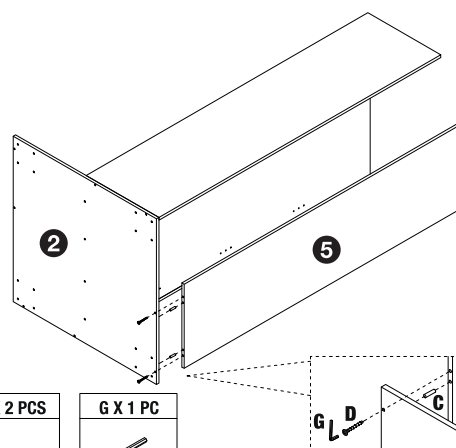
### STEP 2



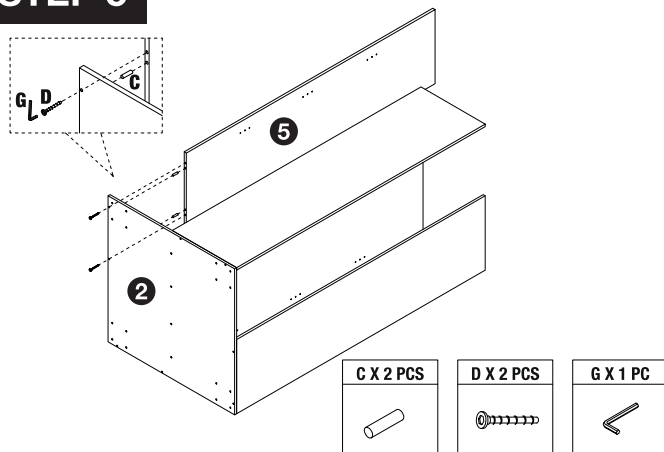
### STEP 3



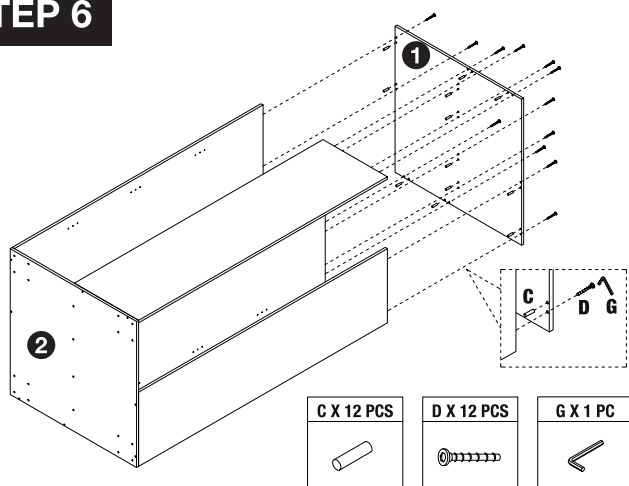
### STEP 4



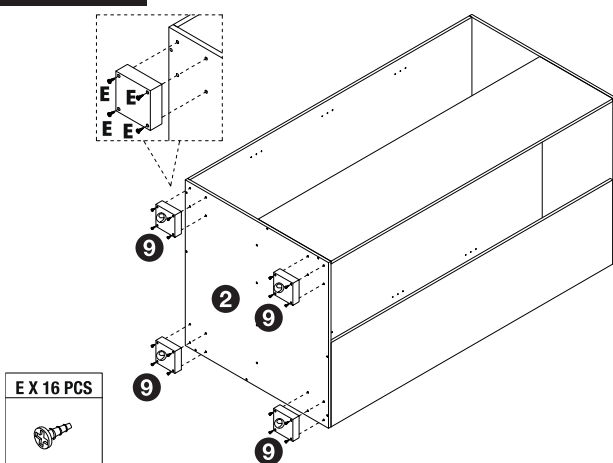
## STEP 5



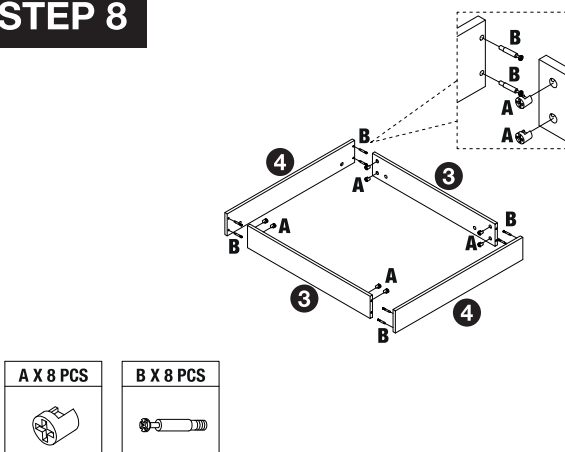
## STEP 6



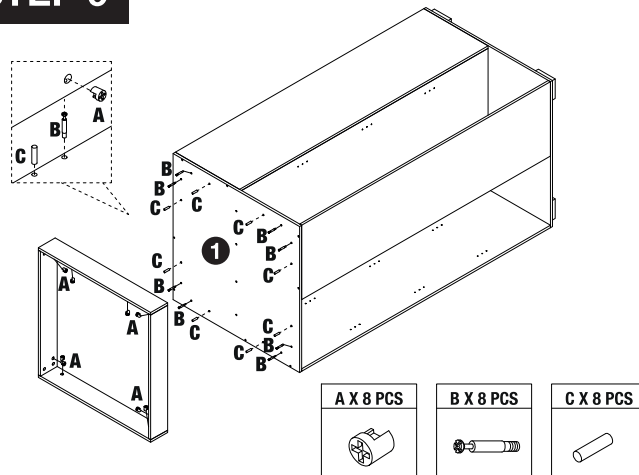
## STEP 7



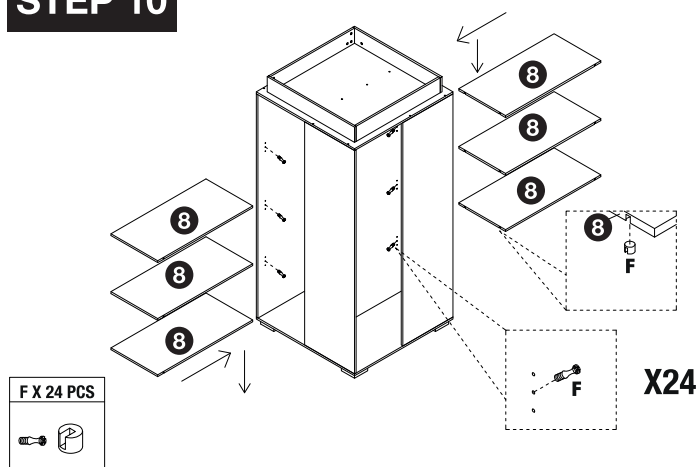
## STEP 8



## STEP 9



## STEP 10



See you

# NEXTIME

[www.nextime.eu](http://www.nextime.eu)

### NEXTIME HEAD OFFICE

Munterslaan 4  
2014 KW, Haarlem  
Netherlands

P +31 (0) 23 5 100 900  
info@nextime.eu

### NEXTIME HONG KONG OFFICE

Unit B, 7/F, Fast Industrial Building,  
658 Castle Peak Road,  
Cheung Sha Wan,  
Kowloon, Hong Kong

P +852 3583 2340  
F + 852 3753 0389  
info.hk@nextime.eu