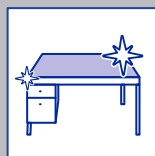
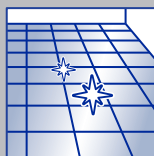


Safe. Simple. Effective.

FRONT OF HOUSE



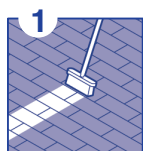
Flash Professional All Purpose Cleaner Cherry Blossom 5L

Effective cleaning for all washable
hard surfaces and floors

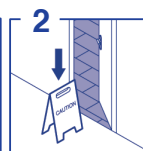
KEY BENEFITS

- Removes tough soils 50% faster vs. leading professional branded competitive all purpose cleaner
- Delivers professional cleaning and long-lasting shine
- Leaves a fresh, pleasant cherry blossom scent
- Can be used neat or diluted, suitable for use in auto-scrubbers
- Effective in all water conditions
- Designed for professionals

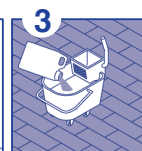
PROTOCOL OF USE FOR CLEANING



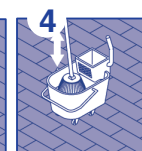
1 Sweep / vacuum the entire area to be cleaned.



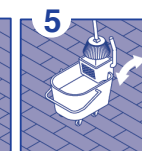
2 Put out appropriate wet floor signage.



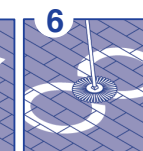
3 Dose product into mop bucket and add water as directed.



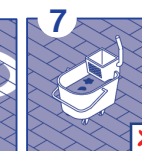
4 Place mop head in solution and move up and down until the mop is thoroughly wet.



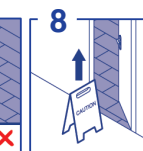
5 Place mop head in wringer to remove as much solution as possible.



6 Mop area to be cleaned using a figure-eight motion.



7 Change mop bucket solution when it becomes dirty and after every use.



8 When job is complete, wait until floor is completely dry before removing wet floor sign.

every **experience** counts.™

P&G
Professional

Safe. Simple. Effective.



FRONT OF HOUSE / FLASH ALL PURPOSE CLEANER CHERRY BLOSSOM 5L

? USAGE AND DOSING INSTRUCTION

Dilute use:

- Bucket use: Dose 60ml (2 caps or 2 dosing pumps) in 5L water. No need to rinse.
- Dual Tank auto-scrubber: Use up to 60 ml in 5L water (2 caps or 2 dosing pumps). No need to rinse.
- Membrane single tank machines: Reduce to 0.3% (1/2 cap in 5L water). No need to rinse.

Neat use:

- For heavy soils apply undiluted product, leave to act for 1-2 minutes and rinse.

♻️ SUSTAINABILITY

- All surfactants break down both quickly and completely into harmless material such as CO₂ and water.
- Recyclable bottle, non-corrosive for skin and surfaces, does not contain bleach.
- Cleans at low water temperatures.
- Concentrated product for less packaging waste.

i TECHNICAL DESCRIPTION

EAN code:	8700216252973
Appearance:	Coloured liquid
Smell:	Cherry Blossom
pH (neat)	11.0
Size:	5 L

! SAFETY INSTRUCTIONS

Please make sure your employees read and understood the product label and your COSHH assessment (Chemical Risk Assessment in EU) before using this product. The label contains directions for use and both label and SDS contain hazard warnings, precautionary statements, first aid procedures and storage information. SDS are available on-line at our website www.pgpro-msds.com or can be provided to you via the call center.

✓ WHERE TO USE

- Effective for cleaning floors, kitchen work surfaces, washroom surfaces and other interior surfaces.
- Safe to use on most washable surfaces ceramic, natural stone, marble, linoleum.

✗ WHERE NOT TO USE

- Avoid prolonged contact with stainless steel, aluminum, painted or varnished surfaces.
- Do not use on porous surfaces.
- If in doubt, first test product on a small inconspicuous area.