

® colpac 

FOOD PACKAGING CREATIVITY

# Colpac Range



**CATERING  
SUPPLIES**  
IT ALL STARTS HERE

# KEY



Colpac is an OPRL member. Products with this label contain less than 15% plastic and are classed by OPRL as recyclable.



## COMPOSTABLE

The paperboard material in these products is commercially compostable within 90 days (EN132432 standard).



## COMPOSTABLE WINDOW

The film material used for these products is commercially compostable within 90 days (EN132432 standard).



## RECYCLABLE

The plastic lids/window films used for these products are recyclable.



## RECYCLED LID

The lids for these products are made from recycled plastic material (rPET).



## RECYCLABLE BOARD

The board for these products is recyclable.



## RECYCLED BOARD

The board for these products is made from recycled material.



## SUITABLE FOR MICROWAVE

The product is suitable for microwave use.



## SUITABLE FOR OVEN

The product is suitable for oven use.



## SUITABLE FOR HOT CABINET

The product is suitable for use in hot cabinets for a maximum of 4hrs  $\leq$  85°C



## SUITABLE FOR FREEZER

The product is suitable for freezer use.



## SHORT SHELF-LIFE

Products with a shorter shelf-life.



## LONGER SHELF-LIFE

Product with a longer shelf-life.

## Glossary

In our material descriptions we use abbreviations, this glossary explains the materials.

**PE** - Polyethylene

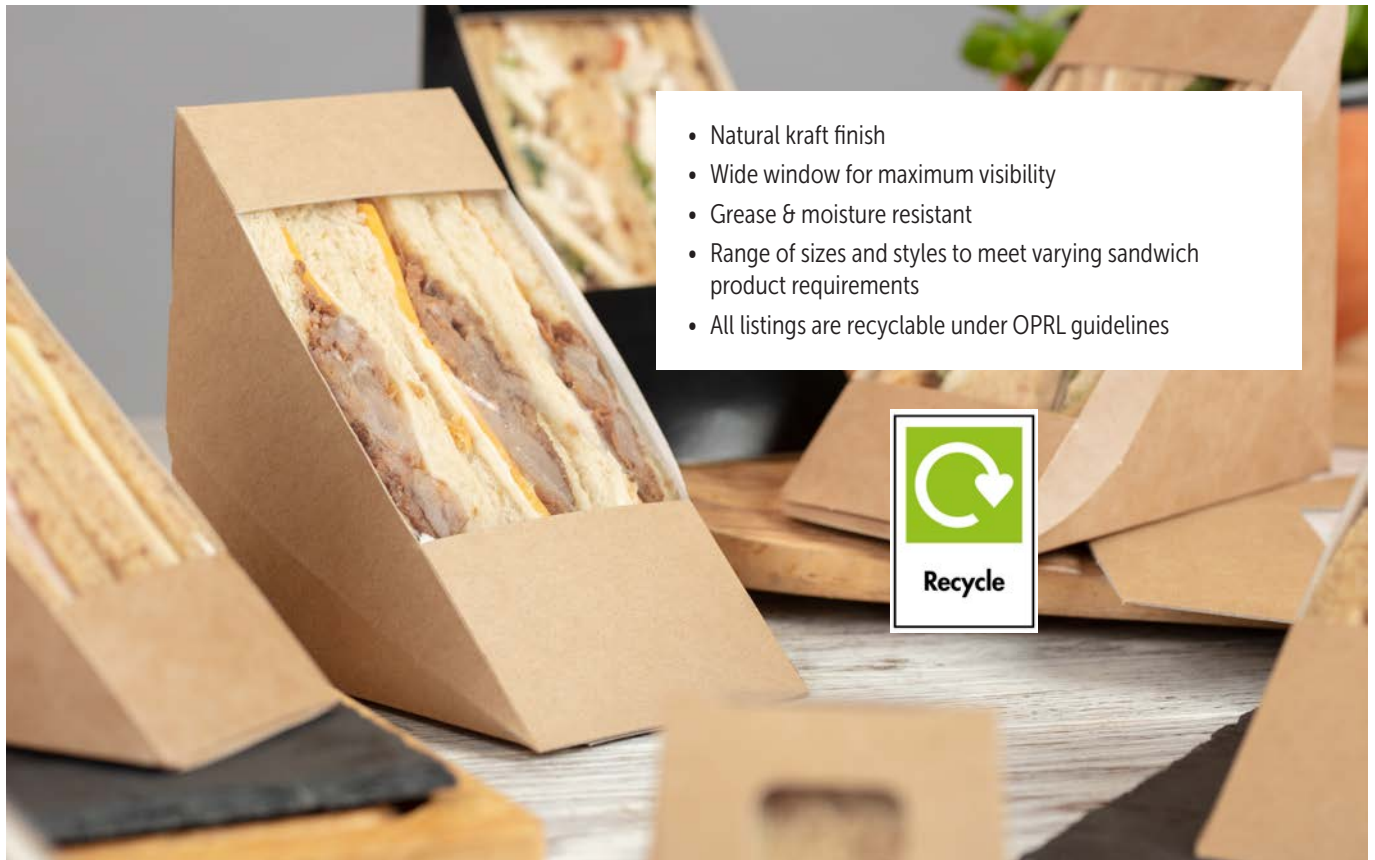
**PET** - Polyethylene Terephthalate

**PP** - Polypropylene

Although Colpac makes every reasonable attempt to test its products for a range of typical applications, Colpac cannot control the specific applications for which its products are used. Therefore, it is the customer's responsibility to test the suitability of a Colpac product for the customer's specific application.

# Cold Takeaway Containers

## SANDWICH PACKS



- Natural kraft finish
- Wide window for maximum visibility
- Grease & moisture resistant
- Range of sizes and styles to meet varying sandwich product requirements
- All listings are recyclable under OPRL guidelines



**NEW**



**NEW**



**NEW**

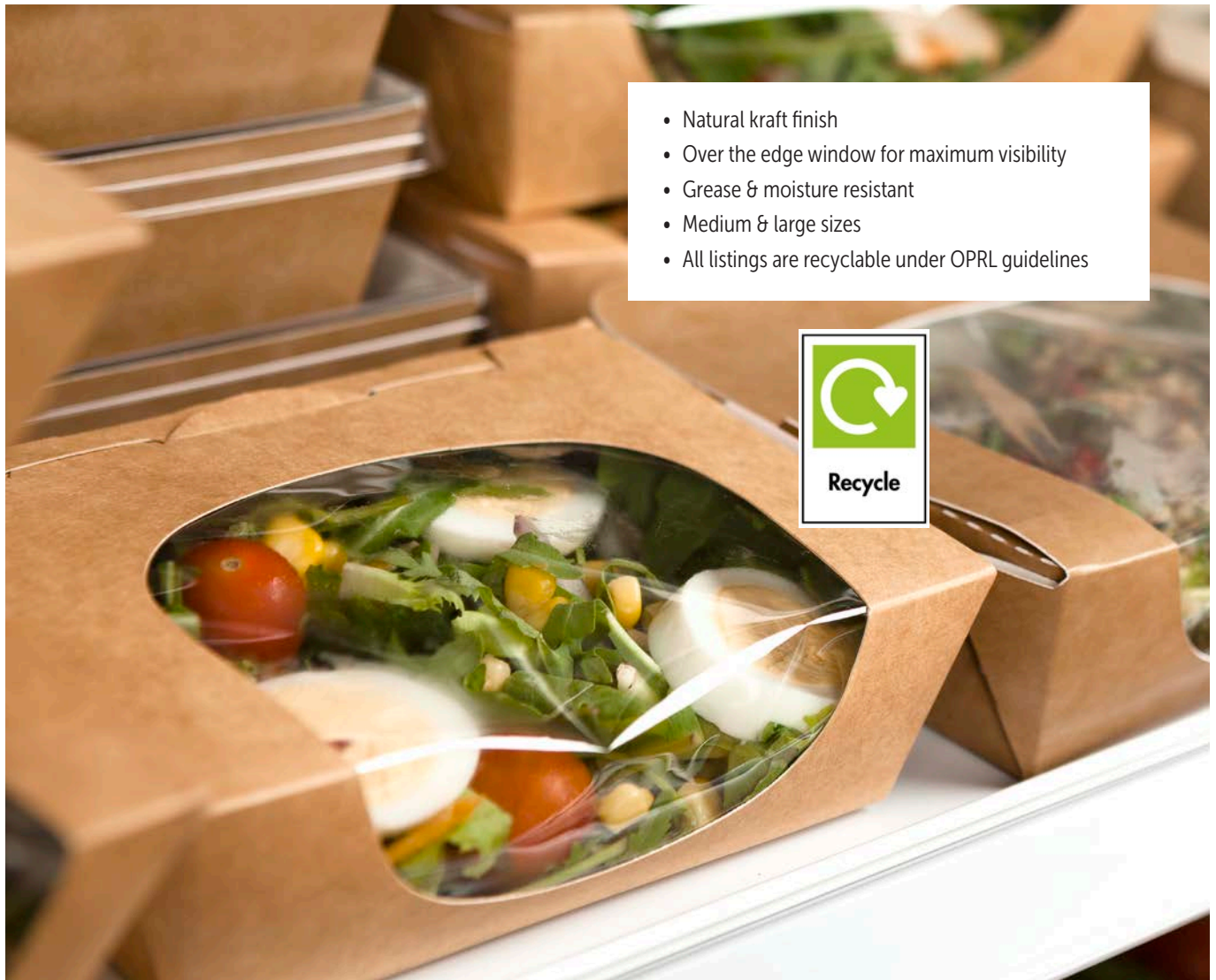


CODE	DESCRIPTION	MATERIAL	DIMENSIONS (L x W x H)	CASE QTY.					
13073	Kraft Sandwich Wedge Standard Size	Recycled kraft board, white to interior. PLA window	123 x 52 x 123mm	500	●	●	●	●	●
13074	Kraft Sandwich Wedge Deep Fill	Recycled kraft board, white to interior. PLA window	123 x 72 x 123mm	500	●	●	●	●	●
13075	Kraft Wrap Pack	Recycled kraft board, white to interior. PLA window	90 x 50 x 90/121mm	500	●	●	●	●	●
72626	Kraft Bloomer & Square Cut Paperboard Sandwich Pack	Recycled kraft board, white to interior. PLA window	125 x 77 x 72mm	500	●	●	●	●	●



# Cold Takeaway Containers

## SALAD BOXES



- Natural kraft finish
- Over the edge window for maximum visibility
- Grease & moisture resistant
- Medium & large sizes
- All listings are recyclable under OPRL guidelines



**NEW**



CODE	DESCRIPTION	MATERIAL	DIMENSIONS (L x W x H)	VOLUME / CAPACITY	CASE QTY.		
13078	Kraft Salad Box Medium	Kraft board, white with PE coating to interior. PET window	160/140 x 120/100 x 50mm	825ml / 29 UK fl.oz	250	●	●
13079	Kraft Salad Box Large	Kraft board, white with PE coating to interior. PET window	200/180 x 120/100 x 50mm	1000 ml / 35 UK fl.oz	200	●	●

# Cold Takeaway Containers

## STAGIONE®



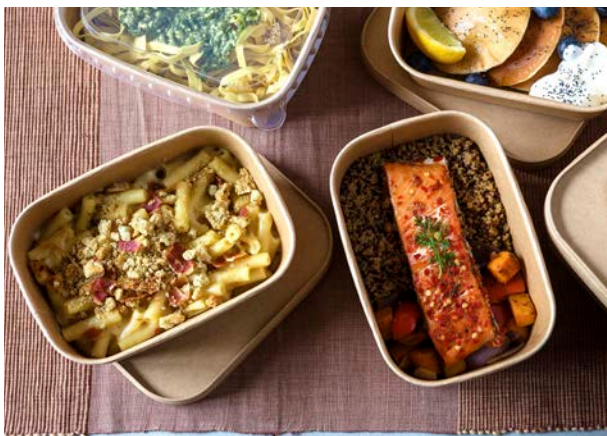
BASES		CODE	DESCRIPTION	MATERIAL	DIMENSIONS (L x W x H)	VOLUME / CAPACITY	CASE SIZE					
	13082	Stagione® FSC Kraft Base 500ml	FSC® certified Kraft board, PP coating to interior	170/152 x 120/100 x 41mm	500ml / 17.5 UK fl.oz	300	●	●	●	●	●	●
	132254	Stagione® FSC Kraft Base 750ml	FSC® certified Kraft board, PP coating to interior	170/150 x 120/98 x 57mm	750ml / 26 UK fl.oz	300	●	●	●	●	●	●
	13255	Stagione® FSC Kraft Base 1000ml	FSC® certified Kraft board, PP coating to interior	170/146 x 120/94 x 77mm	1000 ml / 35 UK fl.oz	300	●	●	●	●	●	●

LIDS		CODE	DESCRIPTION	MATERIAL	DIMENSIONS (L x W x H)	CASE SIZE							
	13257	Stagione® rPET Lid	100% rPET lid	175.5 x 125.5 x 90mm	300	●	●	●	●	●	●	●	



# Hot Takeaway Containers

## STAGIONE®



- FSC® board
- Ultimate packaging solution for chilled, hot and delivered food
- Leakproof high barrier bases
- Lids fit all base sizes
- Superb heat retention for delivery
- Suitable for microwave and freezer
- All listings are recyclable under OPRL guidelines



**NEW**



**Stagione**  
.....a pack for all seasons

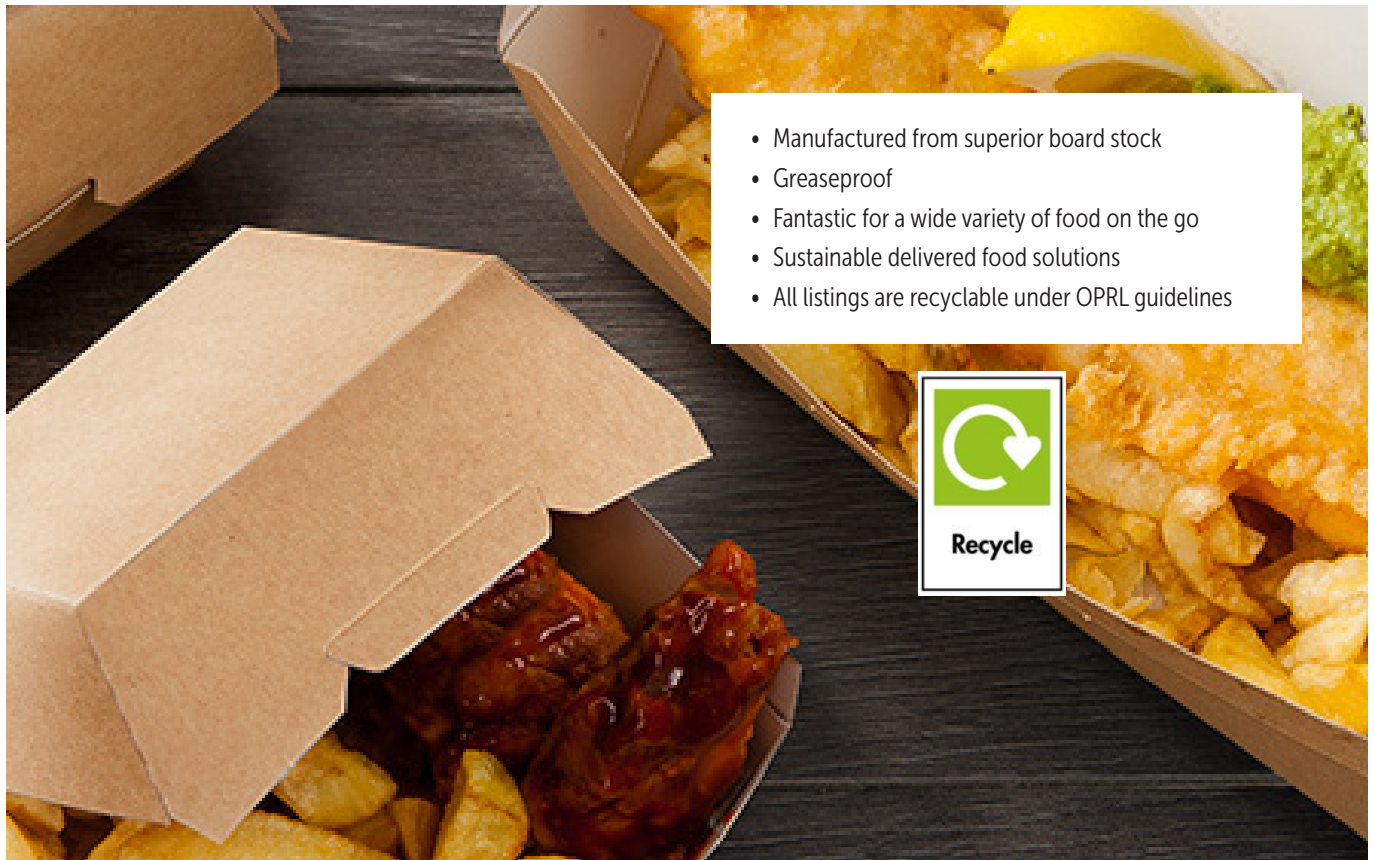
BASES		CODE	DESCRIPTION	MATERIAL	DIMENSIONS (L x W x H)	VOLUME / CAPACITY	CASE SIZE					
	13082	Stagione® FSC Kraft Base 500ml	FSC® certified Kraft board, PP coating to interior	170/152 x 120/100 x 41mm	500ml / 17.5 UK fl.oz	300	●	●	●	●	●	●
	132254	Stagione® FSC Kraft Base 750ml	FSC® certified Kraft board, PP coating to interior	170/150 x 120/98 x 57mm	750ml / 26 UK fl.oz	300	●	●	●	●	●	●
	13255	Stagione® FSC Kraft Base 1000ml	FSC® certified Kraft board, PP coating to interior	170/146 x 120/94 x 77mm	1000 ml / 35 UK fl.oz	300	●	●	●	●	●	●

LIDS		CODE	DESCRIPTION	MATERIAL	DIMENSIONS (L x W x H)	CASE SIZE					
	13256	Stagione® FSC Kraft Lid - PP Lined	Kraft board, PP coating to interior	170 x 120 x 18mm	300	●	●	●	●	●	●
	13257	Stagione® rPET Lid	100% rPET lid	175.5 x 125.5 x 90mm	300	●	●	●	●	●	●



# Hot Takeaway Containers

## BOXES & SCOOPS



- Manufactured from superior board stock
- Greaseproof
- Fantastic for a wide variety of food on the go
- Sustainable delivered food solutions
- All listings are recyclable under OPRL guidelines

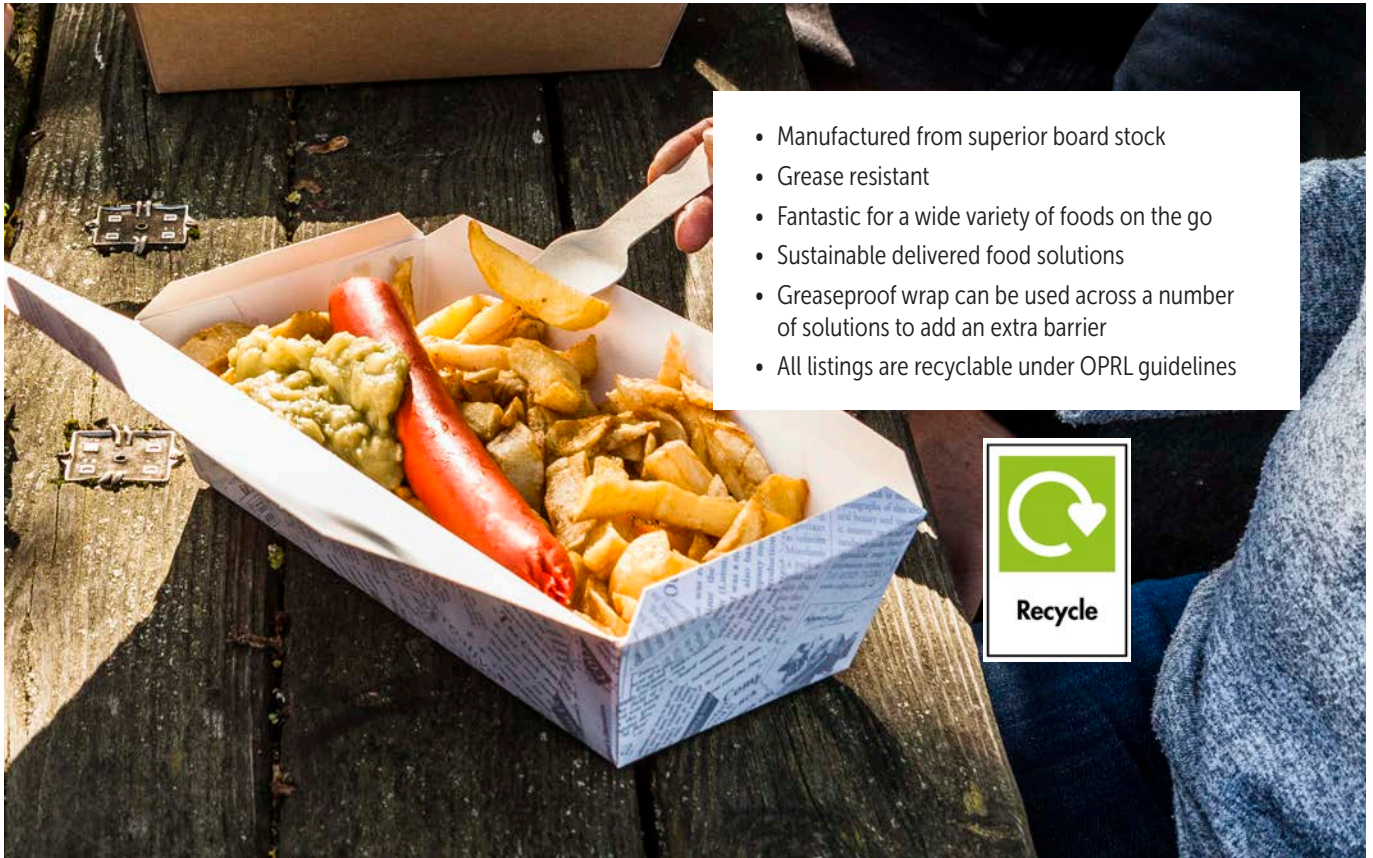


CODE	DESCRIPTION	MATERIAL	DIMENSIONS (L x W x H)	CASE QTY.				
31458	Kraft Clamshell Paperboard Box Medium	Recycled kraft board	108/89 x 108/89 x 70mm	250	●	●	●	●
13077	Kraft Clamshell Paperboard Box Large	Recycled kraft board.	135/115 x 125/105 x 75mm	250	●	●	●	●
13039	Kraft Pizza Slice Tray & Lid	Recycled kraft board	190 x 165 x 40mm	500	●	●	●	●
13076	Kraft Food Sleeve	Recycled kraft board	179 x 42 x 40mm	1000	●	●	●	●
22572	Kraft Chip Scoop Paperboard Medium	Recycled kraft board, white to interior	81/70 x 49/43 x 71/107mm	1000	●	●	●	●
31464	Kraft Chip Scoop Paperboard Large	Recycled kraft board, white to interior	81/70 x 49/43 x 71/122mm	1000	●	●	●	●



# Hot Takeaway Containers

## BOXES



- Manufactured from superior board stock
- Grease resistant
- Fantastic for a wide variety of foods on the go
- Sustainable delivered food solutions
- Greaseproof wrap can be used across a number of solutions to add an extra barrier
- All listings are recyclable under OPRL guidelines



CODE	DESCRIPTION	MATERIAL	DIMENSIONS (L x W x H)	VOLUME / CAPACITY	CASE QTY.				
31469	Kraft Multifood Paperboard Box	Recycled kraft board	250/220 x 125/95 x 60mm	1550ml / 54 UK fl.oz	150	●	●	●	●
31457	Newspaper Print Multifood Paperboard Box	White board printed design to exterior	250/220 x 125/95 x 60mm	1550ml / 54 UK fl.oz	150	●	●	●	
94243	Greaseproof Paper - Newspaper Print	Greaseproof paper	400 x 305mm	n/a	500	●	●	●	



**CATERING**  
**SUPPLIES**  
IT ALL STARTS HERE

[www.bidfoodcateringsupplies.co.uk](http://www.bidfoodcateringsupplies.co.uk)  
[cateringsuppliesenquiries@bidfood.co.uk](mailto:cateringsuppliesenquiries@bidfood.co.uk)