



# THE JERSEY GUY JERSEY PURCHASE ORDER

Name: \_\_\_\_\_

Date: \_\_\_\_\_

Address: \_\_\_\_\_

Phone: \_\_\_\_\_

JERSEY STYLE	SIZE	NAME	NUMBER	QTY	Notes:

JERSEY STYLE EXAMPLES: MENS JERSEY, MENS TANK, WOMEN'S V-NECK, WOMEN'S TANK. PLEASE INCLUDE YOUTH SIZES WITH CORRECT GENDER. FOR SIZING PLEASE USE ABBREVIATIONS, EXAMPLES: XL, 2XL YXS AND PUT IN ORDER FROM SMALLEST TO LARGEST WITH YOUTH SIZES FIRST.

**Total Page  
Quantity**

JERSEY STYLE	SIZE	NAME	NUMBER	QTY	Notes:
			<b>Total Page Quantity</b>		

**TERMS AND AGREEMENTS**

Double check all sizes, names and numbers. These will be printed exactly how it is specified on this form. Any size, custom name and/or number issues will be charged to customer to reprint. I understand and agree to the terms stated above. You will be sent a proof to approve. Once approved jerseys will be sent to print. This is a 2-3 week turnaround time.

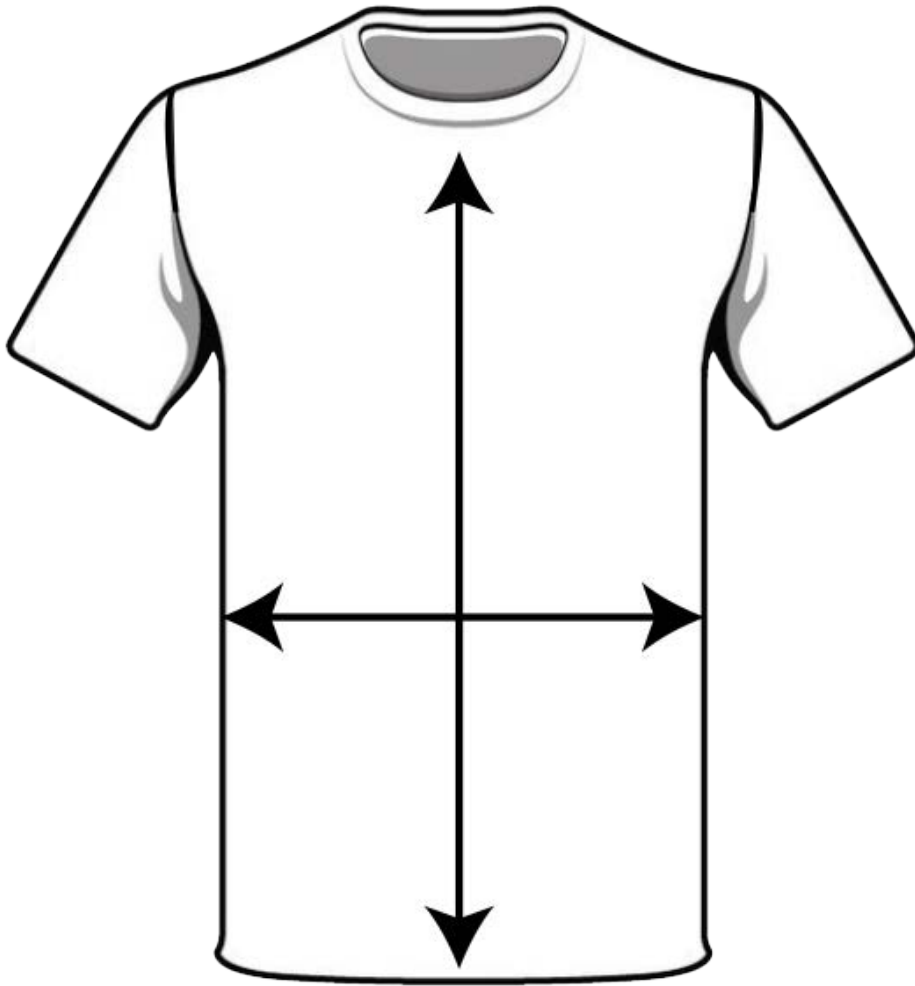
I AGREE



## THE JERSEY GUY SIZING CHART

**IMPORTANT:** These are made with polyester material. THESE DO NOT STRETCH AND DO NOT SHRINK. Please order as if your ordering a sport jersey not a t-shirt. If you are between sizes always go up. These run true to size so if you wear a large t-shirt you will get a large jersey with no stretch so it will feel like slimmer fit. Again a size up will help.

**\*\*THESE ARE MEASURED WITH THE JERSEY LAYING FLAT ON A TABLE\*\***



### Width/Length

#### Youth

YXS - 13"/16"

YS - 16"/18"

YM - 17"/20"

YL - 18"/22"

YXL - 19"/24"

#### Men's

S - 21"/25"

M - 22"/26"

L - 23"/27"

XL - 24"/28"

2X - 25"/29"

3X - 26"/30"

4X - 27"/31"

5X - 28"/32"

#### Women's

S - 21"/18"

M - 22"/19"

L - 23"/20"

XL - 24"/21"

2X - 25"/22"

3X - 26"/23"

4X - 27"/24"

5X - 28"/25"

### AVAILABLE STYLES:

- MENS JERSEYS
- WOMENS JERSEYS
- YOUTH JERSEYS
- MENS SLEEVELESS
- MENS TANKS
- WOMENS TANKS
- WOMENS V-NECKS
- PULL OVER HOODYS