

# indi™

## Guide for Multilingual Learners

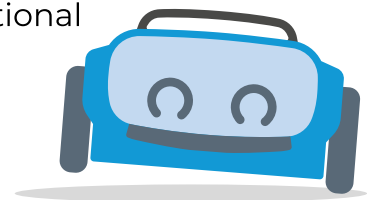
### What is Sphero indi?

indi is the most approachable, entry-level, learning robot. Driven by color, indi inspires imaginative, play-based learning by empowering kids to develop computational thinking skills and learn the basics of coding and problem solving.



### Why indi for multilingual learners?

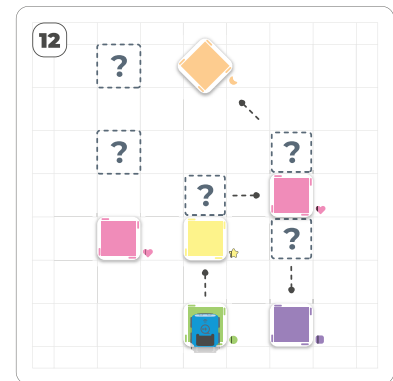
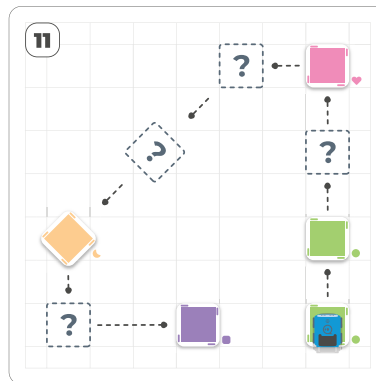
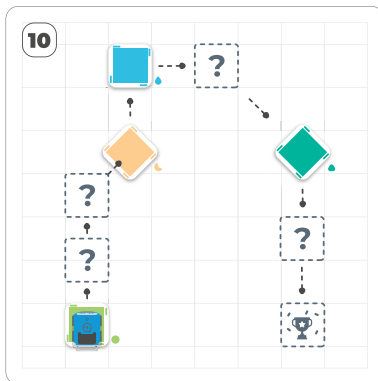
- indi engages learners regardless of reading level or primary language.
- Consistent coding rules allow students to focus on objectives.
- Lights, sounds, and movement engage learners.
- indi's code mat facilitates conversations around foundational literacy skills.



# Challenge Cards

## Text-Free Learning

Text-free challenge cards allow students to practice their computational thinking regardless of reading level or primary language. They can solve puzzles collaboratively or independently, which offer excellent opportunities for students to practice key language uses through expressive communication.



### indi encourages students to...

- confidently **solve problems** without relying on text-based instructions
- **inform** others of their process by describing their program
- **explain** how and why their program works
- practice **positional language**



Easily create your own Challenge Cards for your students with our [DIY Challenge Card Template](#).



# Color Tiles

*Easy Replication, Instant Feedback*

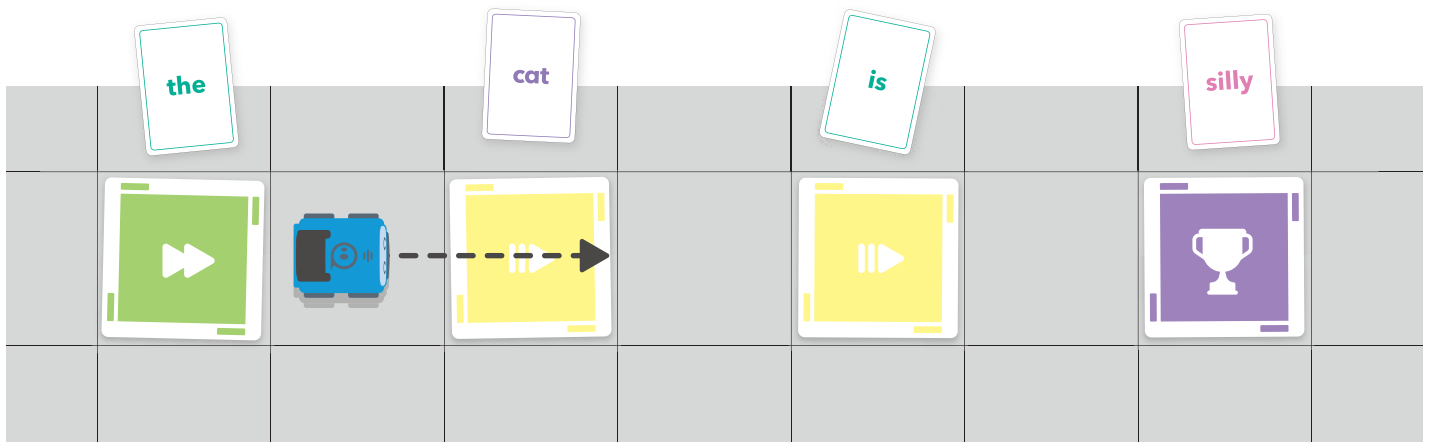
indi responds to the color tiles the same way every time, allowing students to focus on the objective rather than logistics.



Students can begin by exploring the purpose of each tile, strengthening their pattern recognition skills. Once they have discovered how to use the tiles to build programs, they're able to tie in cross-curricular skills.

**For example:**

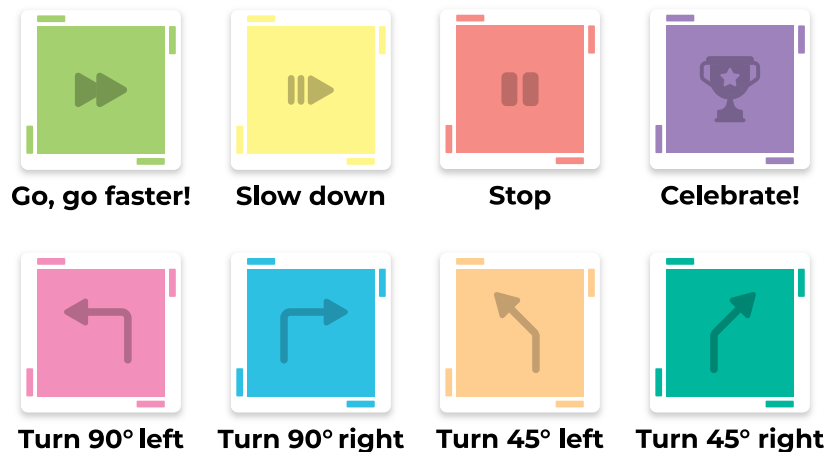
*Create simple sentences using words on cards, ask students to create a program that drives indi from one word to the next while they read the words out loud. To begin, indi might need to use yellow tiles with the words spaced out, but as fluency builds, the program can change to match the student's cadence. Check out our DIY word cards [here](#).*



# indi on the Move

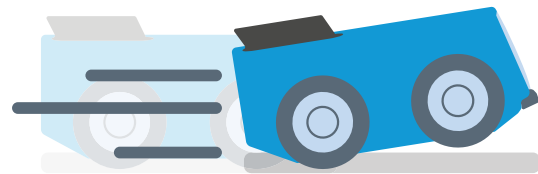
## Engaging Learners

indi engages learners through lights, sounds, and movement encouraging language use and the repetition necessary for retention, all while having fun. The clear physical outputs—lights, sounds, and movement—reinforce interpretive communication and offer students immediate feedback allowing them to adjust their programs in real-time.



**indi's movement** and engaging outputs encourage students to develop and use

- sequential signals to describe patterns: “indi goes on the green tile **first**.”
- prepositional phrases: “The blue tile is in **front** of the purple tile.”
- comparison language: “Our programs are the **same**.”
- causal language: “indi slowed down **because** it went over the yellow tile.”

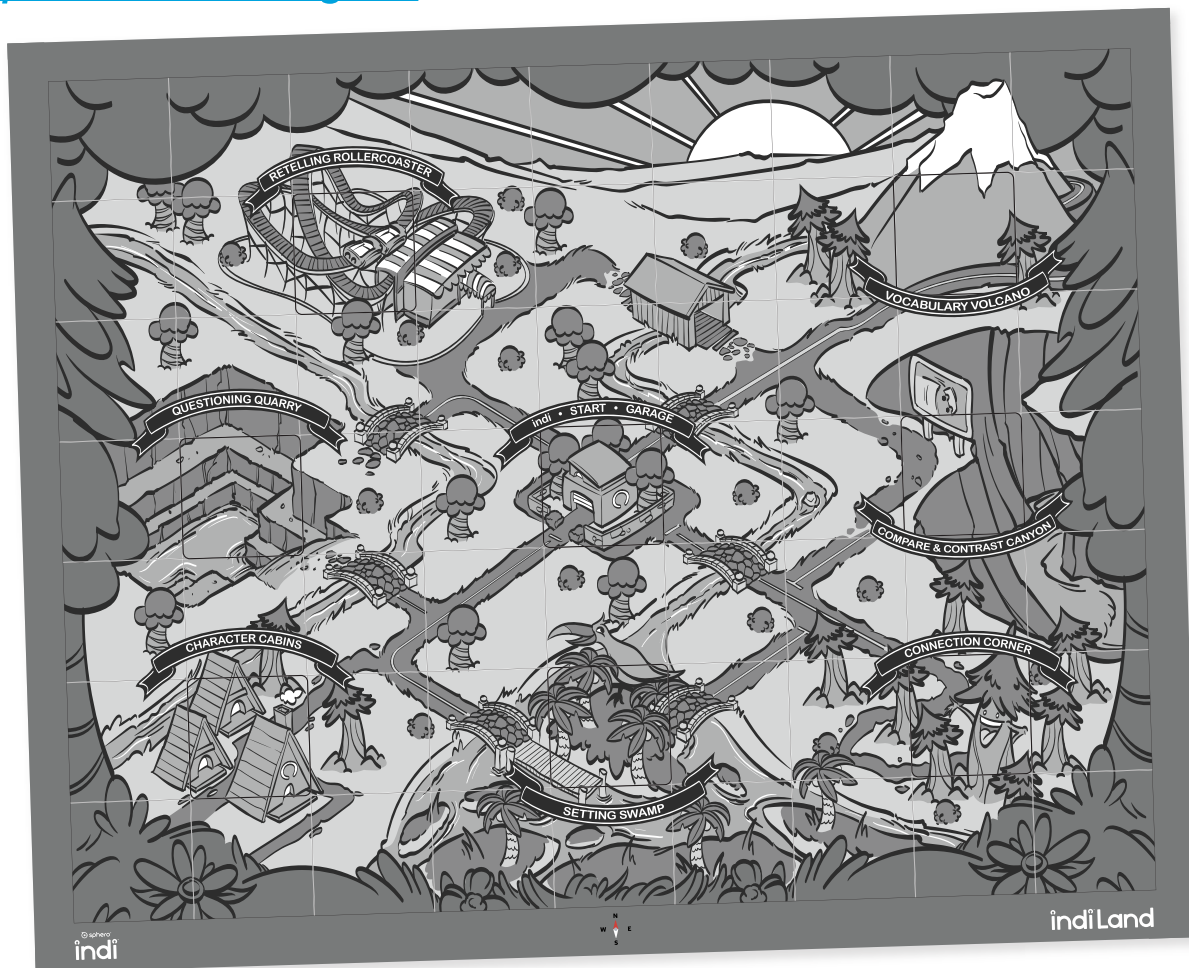


# indi Land

## indi Land: Reinforcing Literacy Skills

indi's code mat inspires conversations around key literacy skills in an engaging and collaborative way. Each spot in indi Land offers an opportunity to discuss these key literacy skills. Students drive indi from one spot to the next and discuss the different parts of a story. Each location is aligned to WIDA's ELD Standards—you can find alignment and lesson ideas here:

[sphero.cc/indiLand-guide](https://sphero.cc/indiLand-guide)



**Retelling Rollercoaster:** retelling the beginning, middle, and end of a story

**Vocabulary Volcano:** select and define vocabulary words

**Compare and Contrast Canyon:** compare and contrast characters, events, or stories

**Connection Corner:** discover text-to-text and text-to-life connections

**Setting Swamp:** describe and identify the setting

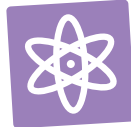
**Character Cabins:** identify and describe characters

**Questioning Quarry:** ask and answer questions about the text



## Activity Resources

### Challenge Cards



Young learners can work independently or in groups through self-guided learning with the 15 included Challenge Cards.

*Included with the indi Student Kit & the indi Class Pack*

### indi Math and Literacy Guide

indi supports early learning in literacy and language development. indi also supports the development of big ideas in early mathematics such as counting, patterns, measurement, spatial relationships, and shapes.

[Find Guide Here](#)



### Sphero Edu Jr App

Are your students ready for the next level? In the Sphero Edu Jr app students can control how indi reacts to the world through intuitive yet powerful programming blocks. Reprogram how indi responds to different colors by choosing from a variety of movements, lights, and sounds.

[Free App Download](#)



### indi Special Education Guide

What makes indi great for special education? indi supports language development, helps develop fine motor skills, and is accessible to learners with visual and auditory impairments.

[Find Guide Here](#)



### Educator Guidebook

indi seamlessly integrates computational thinking and coding concepts into the curriculum you are already teaching with the in-depth Educator Guide Book. This book includes carefully-designed, standards-aligned lesson plans for: Directions, Patterns, Measuring, Storytelling, and more.

*Included in the indi Class Pack*

