

Stencell

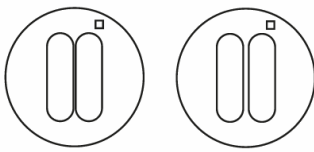
Miniature cell culture chambers

Stencell are ready-to-use silicon chambers that you can easily stick and remove from culture plates to create controlled cell culture areas.



Applications

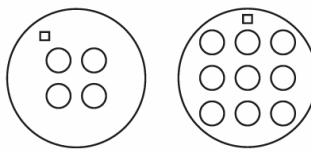
Cell migration and wound healing



Presto

Allegro

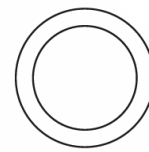
Parallelized experiments



Quartet

Nonet

Confined experiments



Solo

Key features

✓ Versatile

Stencells have been successfully used on a variety of culture labware including glass & plastic substrates, transwell inserts & polyacrylamide gels

✓ Parallelized and standardized experiments

One multiwell Stencell allows for up to 9 experimental conditions

✓ Easy removal

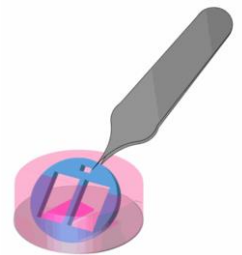
Stencells are not glued and can be easily removed to trigger cell migration or switch from flow chamber to an open configuration

✓ Compatible with imaging

These thin sheets of silicone are fully transparent and do not produce any autofluorescence

✓ Saves samples and reagents

A few microliters only are required



Results

Using Stencell for migration assays

COS-7 cells were seeded on a Stencell Presto sheet and imaged right after its removal (left), or 18h later after colonizing the gap (right). Images were acquired on an inverted microscope using a 20X objective.

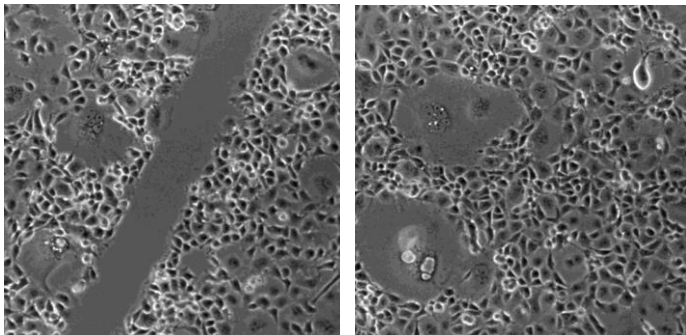


Image credit: Pierre-Olivier Strale

Using Stencell for COS-7 cell confinement

Staining: actin (green), nucleus (blue - left / red - right).

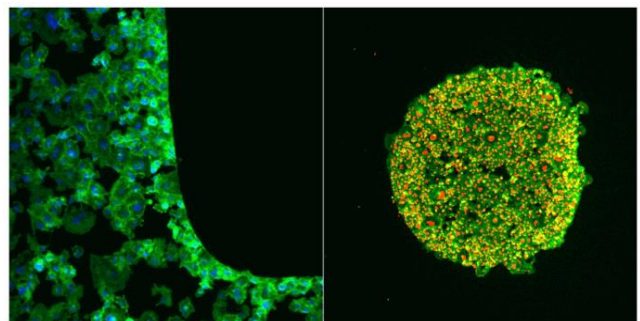


Image credit: Pierre-Olivier Strale