

## Section 1: General information

### Details of the supplier of the certificate of analysis

**Company** Idylle  
68 boulevard de Port-Royal  
75005 Paris  
France

**Technical phone** +33184172227

**Email address** [contact@idylle-labs.com](mailto:contact@idylle-labs.com)

**Quality release date** 29/10/2020

**Production date** TBC

**Batch code** **LJU-CAG-5-2011**

### Product

**Product name** Actiflash

## Section 2: Tests and conformity

Test	Specification	Result
Appearance (color)	Yellowish	Orange
Appearance (form)	Solid	solid
Purity (HPLC)	>95%	96.4% (See section 3.1)
Purity ( <sup>1</sup> H NMR)	Conform to publications	Conform (See section 3.2)

## Section 3: Supplementary material

### 3.1 HPLC Analysis

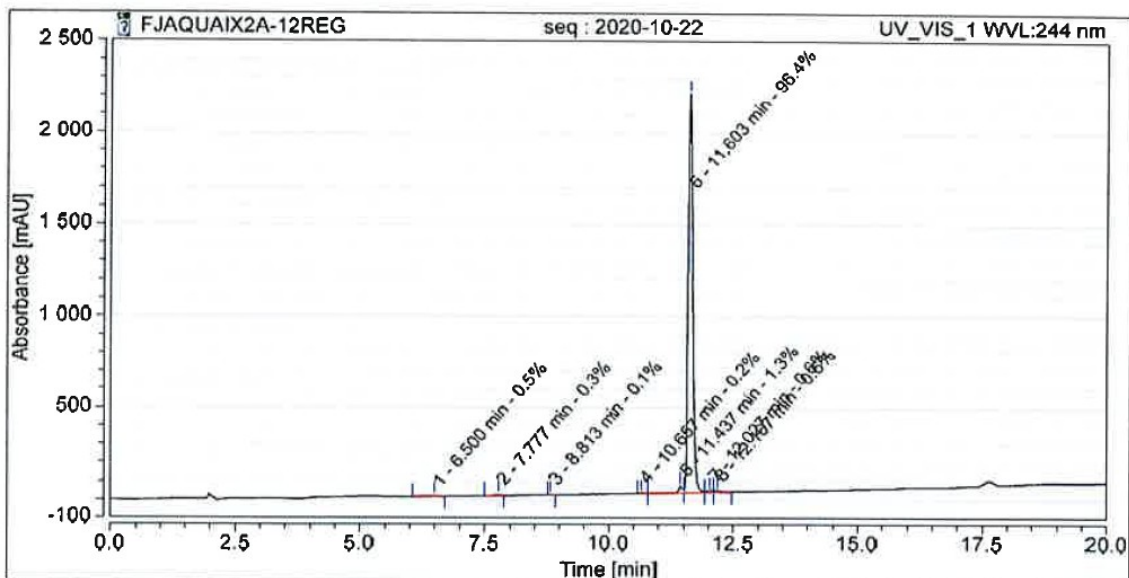
#### Method

Carried out using a Synchronis C18 column (150x4.6 mm, 5 µm), 1 mL/min at 244 nm using the following solvent system and gradient : A = H<sub>2</sub>O + 0.1% HCO<sub>2</sub>H and B = CH<sub>3</sub>CN + 0.1% HCO<sub>2</sub>H.

Time (min)	0	1	16	18	18.1	20
% A	95	95	5	5	95	95
% B	5	5	95	95	5	5

Idylle warrants that at the date of the quality release, the product conformed to the information contained in this certificate of analysis, available on [www.idylle-labs.com](http://www.idylle-labs.com). For further inquiries, please contact Idylle using the information provided in this document.

## Chromatogram



No.	Peak Name	Retention Time min	Area mAU*min	Relative Area %
1		6.50	1.2	0.5
2		7.78	0.7	0.3
3		8.81	0.3	0.1
4		10.66	0.4	0.2
5		11.44	3.2	1.3
6		11.60	231.1	96.4
7		12.03	1.5	0.6
8		12.17	1.4	0.6
<b>Total:</b>			<b>239.8</b>	<b>100.0</b>

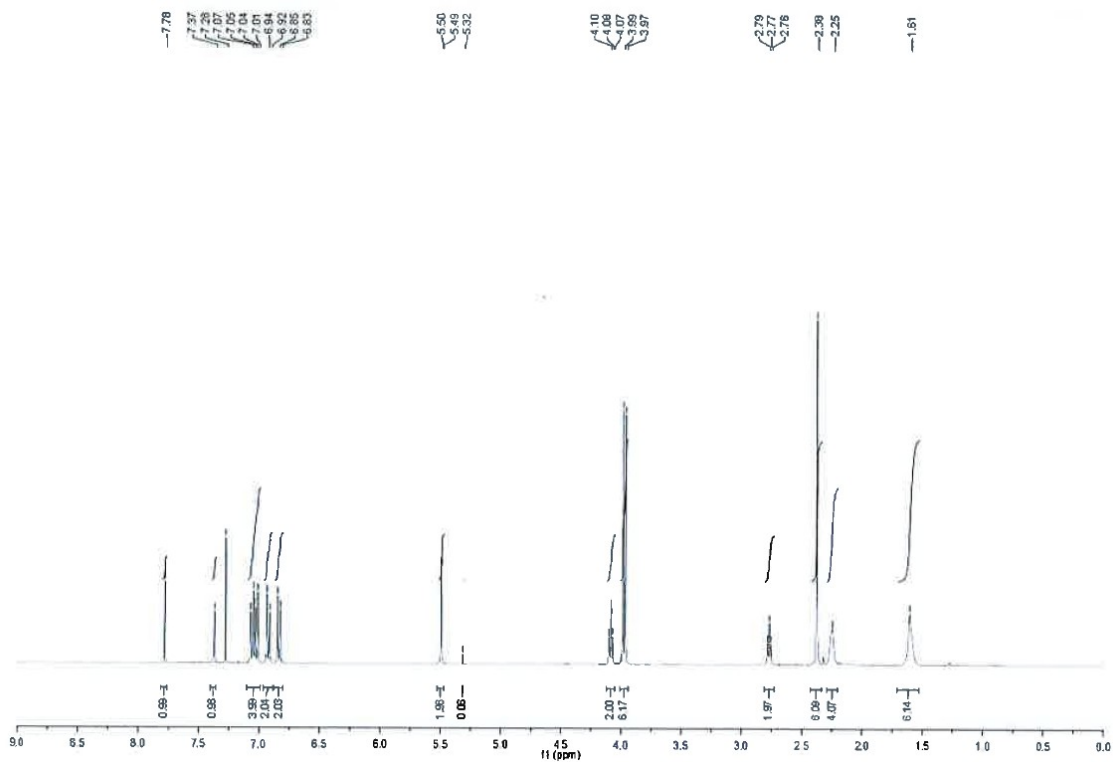
Idylle warrants that at the date of the quality release, the product conformed to the information contained in this certificate of analysis, available on [www.idylle-labs.com](http://www.idylle-labs.com). For further inquiries, please contact Idylle using the information provided in this document.

## 3.2 <sup>1</sup>H NMR Analysis

### Method

Carried out using at 400 MHz in deuterated chloroform.

### Spectrum



Idylle warrants that at the date of the quality release, the product conformed to the information contained in this certificate of analysis, available on [www.idylle-labs.com](http://www.idylle-labs.com). For further inquiries, please contact Idylle using the information provided in this document.