



FIRE

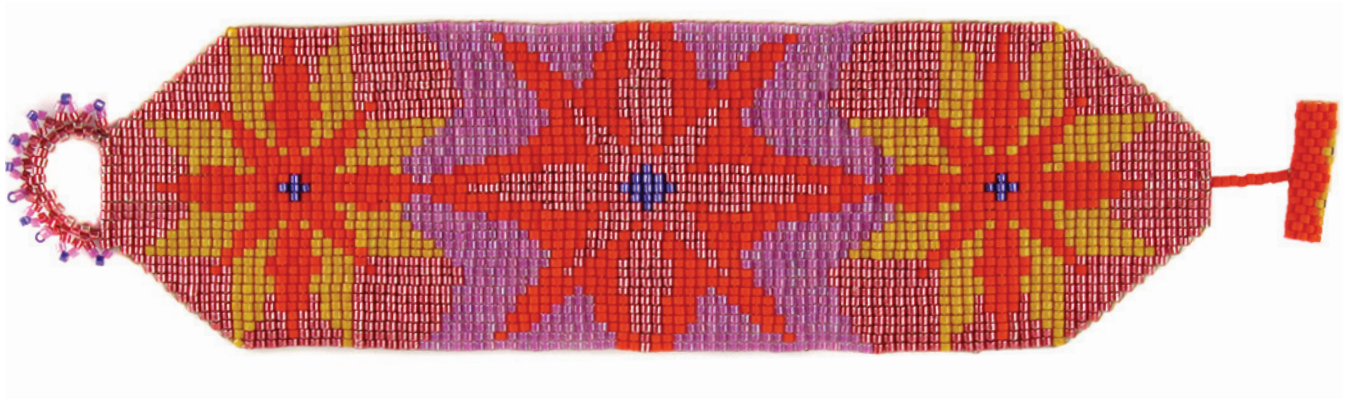
LOOM or SQUARE STITCH PATTERN

Length: 91 beads (6")*

Width: 35 beads (1 3/4")

*Measurement does not include length of clasp and findings.

*A photograph of the finished loomed bracelet appears in the
April/May 2007 issue of BEADWORK magazine. Loomwork
below by Frieda Bates.*



Elemental Colors

At our core, we resonate with nature. Our bodies are attuned to her elements, her seasons, her rhythms. We each gravitate to an element or a combination of elements. And this shows in our art. Not just in the colors we use, but also in our composition, our shapes, our style, and the content we choose to express.

Fire

Fire energy is a quick, hot, passionate burn. Its movement is fast, almost impulsive. There is natural warmth to people who resonate with fire, and it is apparent in their colors and their art, which is dynamic and forceful. Colors can be “all over the place”—all kinds of hues and intensities and values, all fast moving and alive. They sparkle, flash, and ignite. Like a wall of fire, fire energy people have tremendous presence and live in the moment.

MARGIEDEEB.COM

The Art of Color for Bead Artists

www.MargieDeeb.com

FIRE

LOOM or SQUARE STITCH PATTERN




Length: 91 beads (6")*

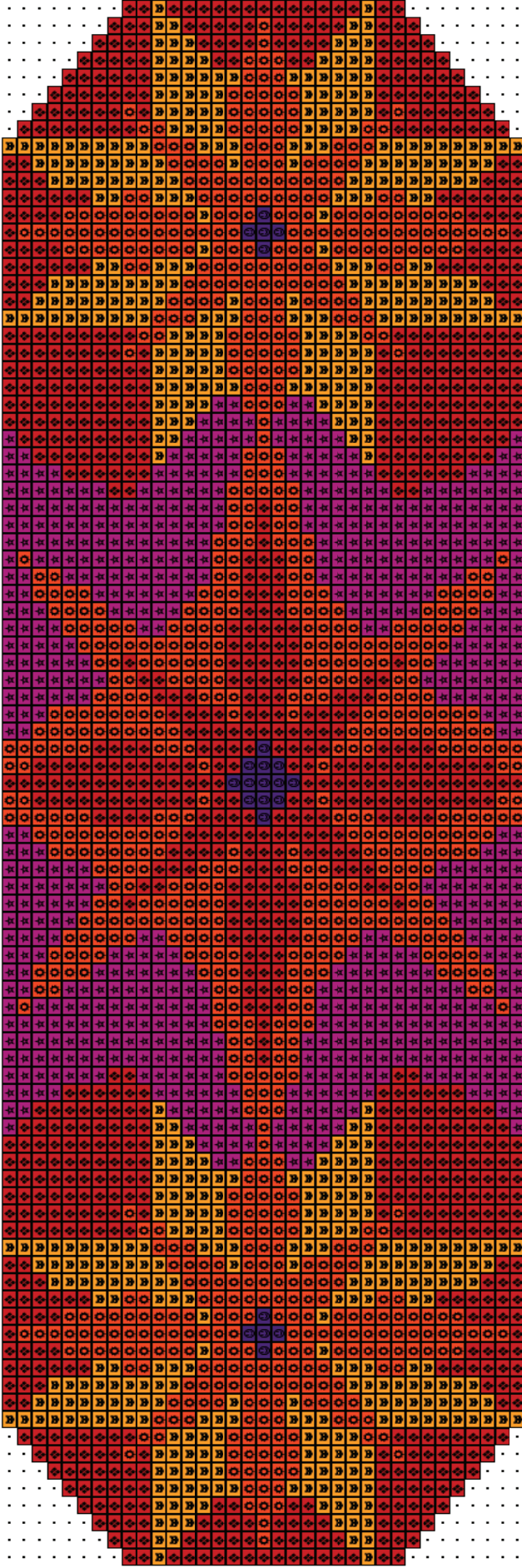
Width: 35 beads (1 3/4")

*Measurement does not include length of clasp and findings.

A photograph of the finished loomed bracelet appears in the April/May 2007 issue of BEADWORK magazine.

Quantity of Beads Delica Color

5 grams Matte Opaque Orange	#752	
23 beads Silver-lined Violet	#610	
3 1/2 grams Magenta Purple AB	#073	
3 grams Opaque Goldenrod (Dyed)	#651	
5 1/2 grams Watermelon Matte AB	#362	



MARGIEDEEB.COM

The Art of Color for Bead Artists

www.MargieDeeb.com



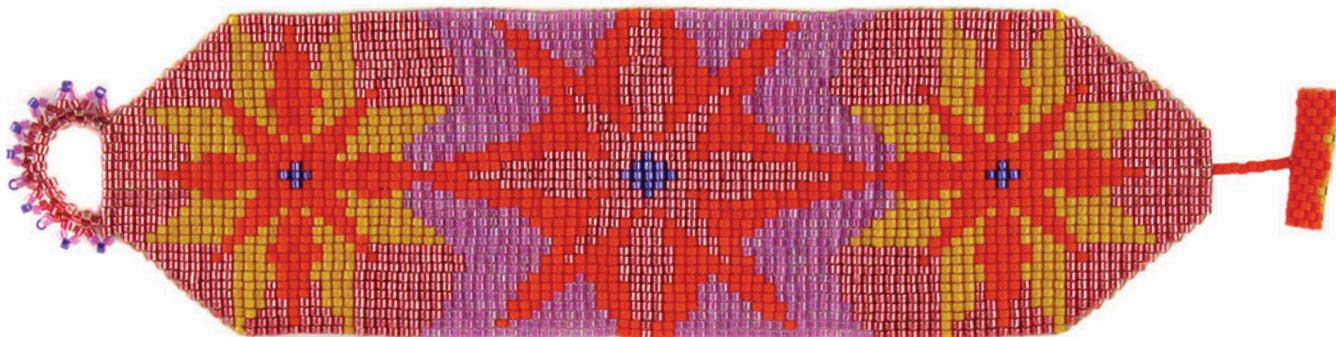
FIRE

PEYOTE or BRICK STITCH PATTERN

Length: 91 beads (6")*
Width: 35 beads (1 3/4")

*Measurement does not include length of clasp and findings.

*A photograph of the finished loomed bracelet appears in the
April/May 2007 issue of BEADWORK magazine. Loomwork
below by Frieda Bates.*



Elemental Colors

At our core, we resonate with nature. Our bodies are attuned to her elements, her seasons, her rhythms. We each gravitate to an element or a combination of elements. And this shows in our art. Not just in the colors we use, but also in our composition, our shapes, our style, and the content we choose to express.

Fire

Fire energy is a quick, hot, passionate burn. Its movement is fast, almost impulsive. There is natural warmth to people who resonate with fire, and it is apparent in their colors and their art, which is dynamic and forceful. Colors can be "all over the place"—all kinds of hues and intensities and values, all fast moving and alive. They sparkle, flash, and ignite. Like a wall of fire, fire energy people have tremendous presence and live in the moment.

MARGIEDEEB.COM

The Art of Color for Bead Artists

www.MargieDeeb.com

FIRE

PEYOTE or BRICK STITCH PATTERN



Length: 91 beads (6")*

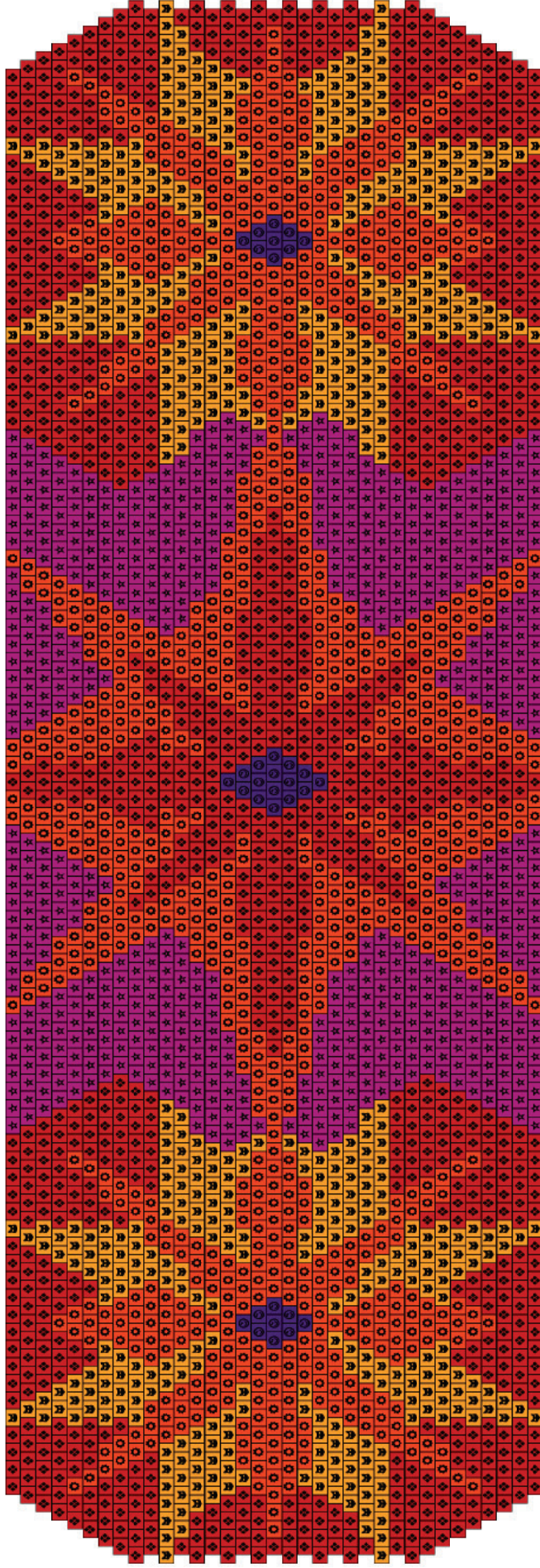
Width: 35 beads (1 3/4")

*Measurement does not include length of clasp and findings.

A photograph of the finished loomed bracelet appears in the April/May 2007 issue of BEADWORK magazine.

Quantity of Beads Delica Color

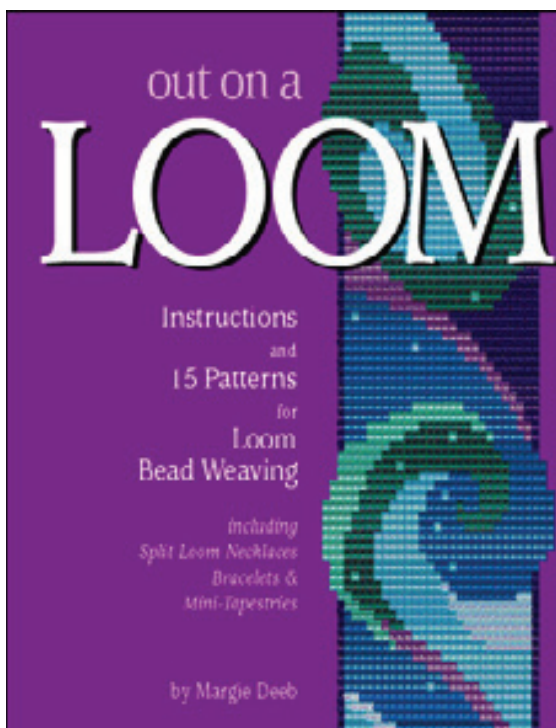
5 grams Matte Opaque Orange	#752	
23 beads Silver-lined Violet	#610	
3 1/2 grams Magenta Purple AB	#073	
3 grams Opaque Goldenrod (Dyed)	#651	
5 1/2 grams Watermelon Matte AB	#362	



MARGIEDEEB.COM

The Art of Color for Bead Artists

www.MargieDeeb.com



[Out On A Loom](#) is a creative journey through color, design, and form for the beginning to intermediate level seed bead artist.

The soft cover book features 32 full-color pages of detailed instructions, patterns, illustrations, and diagrams for creating loom woven bracelets, mini-tapestries and split loom necklaces. Professional and creative finishing techniques are provided so each finished project can be a work of art.

(Paperback, 36 pages)

Sugg. Retail:

\$19.95 US Dollars

BeadSmith Item # BK1942

Artist, designer, musician, and color expert

[Margie Deeb](#) is the author of several beading books, including the popular *The Beader's Guide to Color* and *The Beader's Color Palette*. Her color palette book was named the **Best Craft How-To Book of 2009** by the prestigious Library Journal.



She teaches color courses for artists, interior designers, and beaders. Her free monthly color column, "*Margie's Muse*," is available on her website. She produces a free graphically enhanced podcast, "*Margie Deeb's Color Celebration*," available on iTunes.

Her articles have appeared in *Bead & Button* and *Beadwork* magazines, and she writes a regular color column in *Step-by-Step Beads*. She has appeared on the PBS show "Beads, Baubles, and Jewels" speaking about color. Visit Margie's website for her books, patterns, jewelry, inspiration, and more.

Margie's Blog:

colorforbeadartists.com