

STAMP



UNLESS OTHERWISE SPECIFIED:
 DIMENSIONS ARE INCHES
 TOLERANCES:
 FRACTIONAL ±
 ANGULAR: MACH ±
 BEND ±
 TWO PLACE DECIMAL ±.010
 THREE PLACE DECIMAL ±.005

MATERIAL:
 FINISH:

PROPRIETARY AND CONFIDENTIAL

THE INFORMATION CONTAINED IN THIS DRAWING IS THE SOLE PROPERTY OF ELECTRIC TECH CONSTRUCTION, INC. ANY REPRODUCTION IN PART OR AS A WHOLE WITHOUT THE WRITTEN PERMISSION OF ELECTRIC TECH CONSTRUCTION, INC. IS PROHIBITED.

APPROVALS & DATES

NOT FOR CONSTRUCTION UNLESS LABELED AS CONSTRUCTION SET

SITE NUMBER

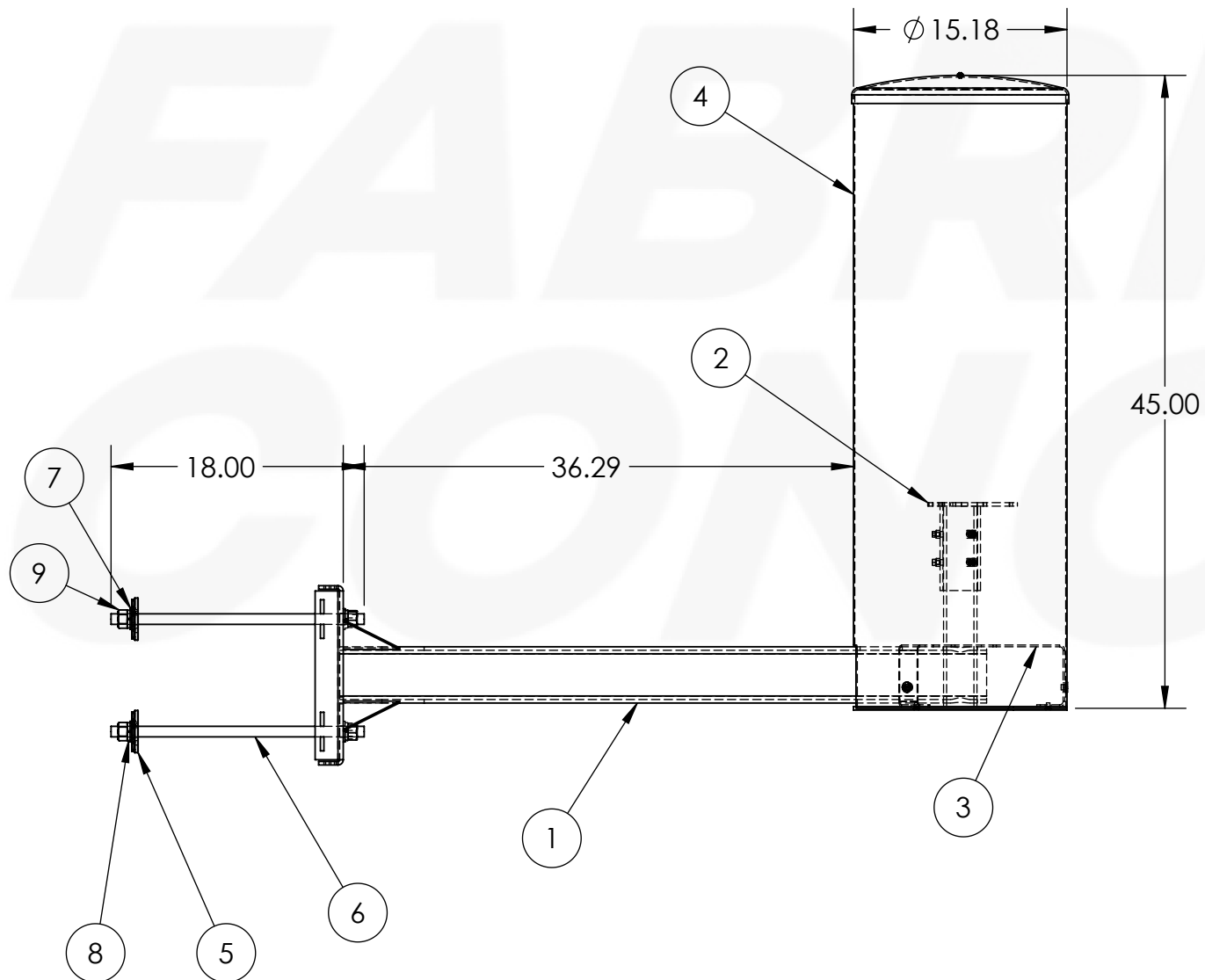
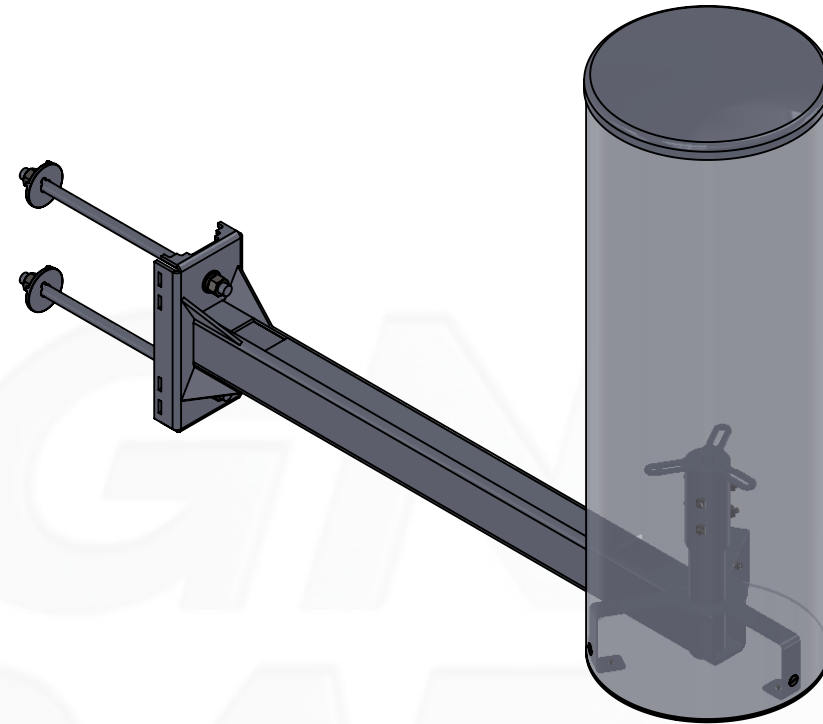
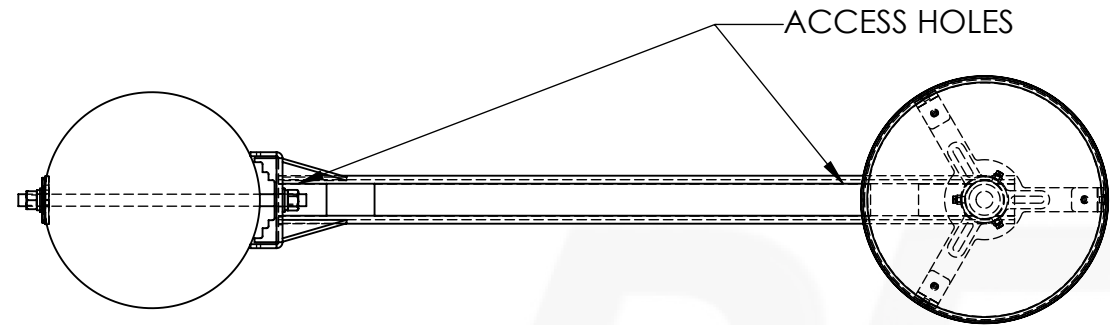
SITE NAME

PRODUCT ID #

SIDE ARM POLE MOUNT DETAILS rev B

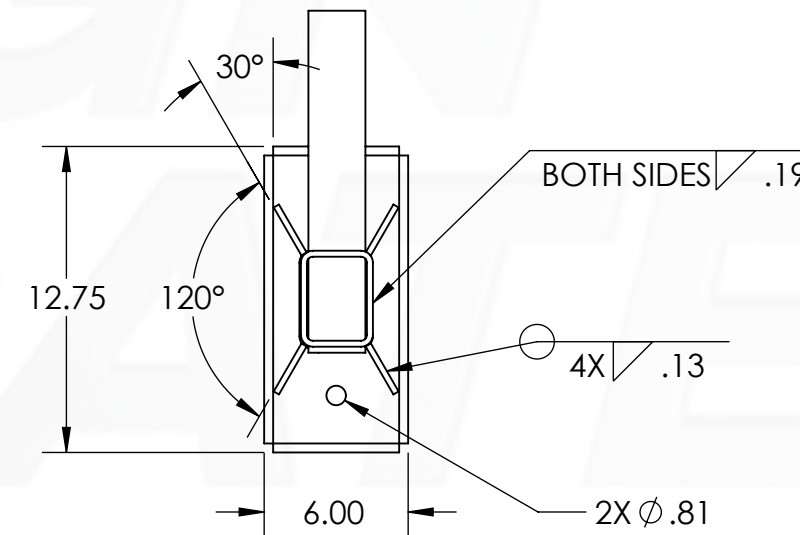
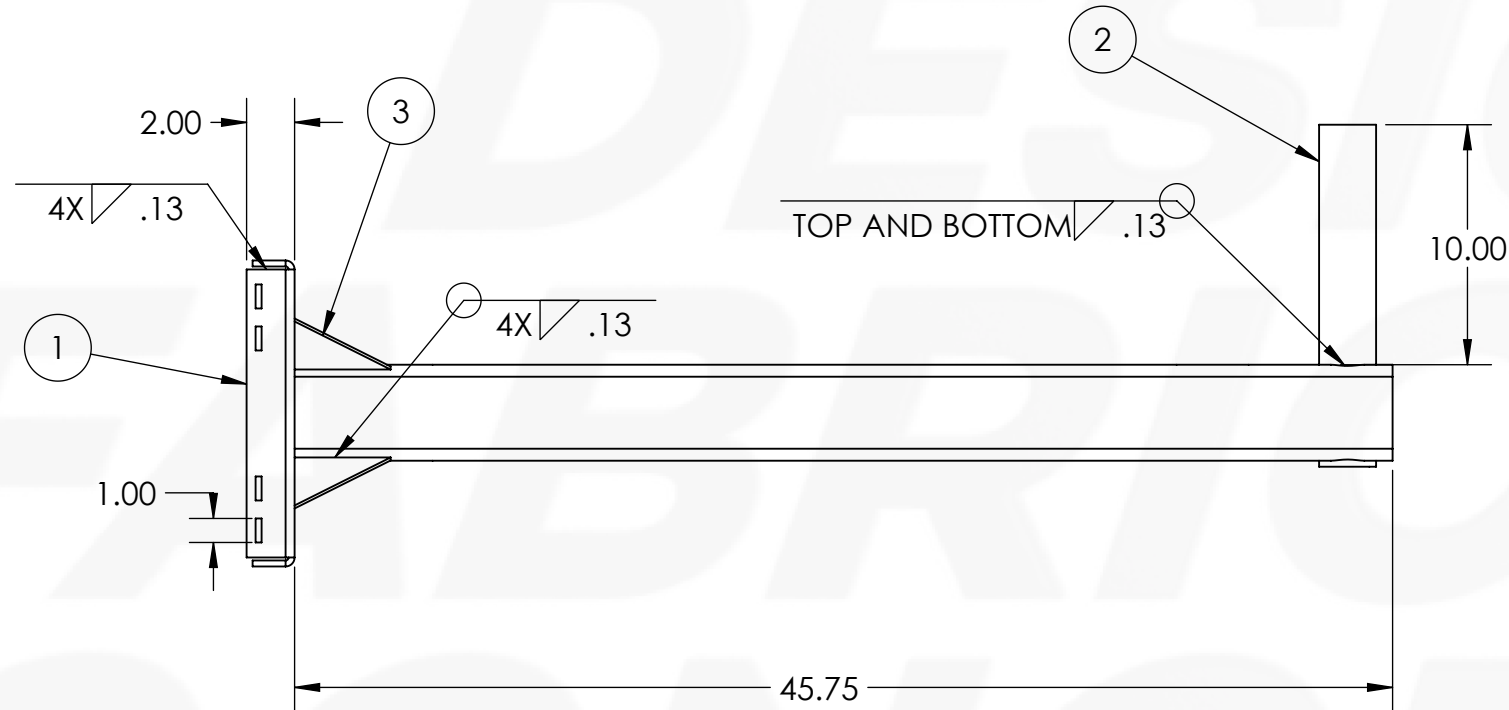
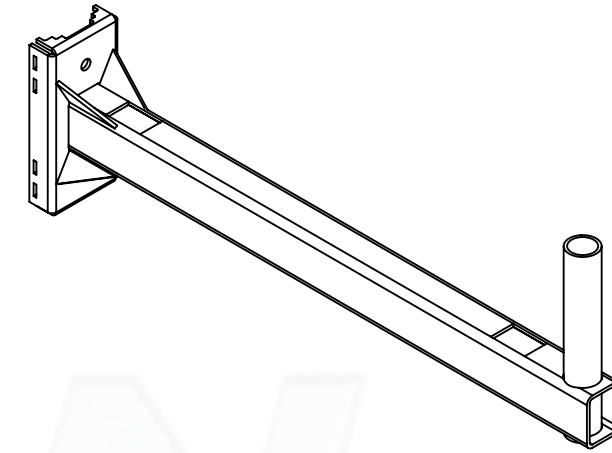
REV | A

PRODUCT DESCRIPTION

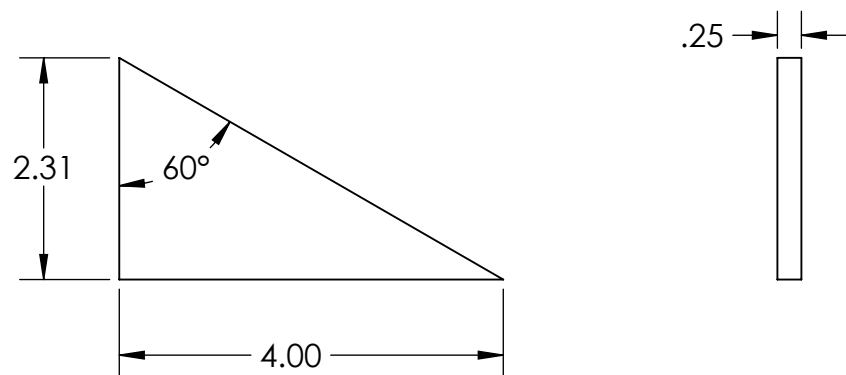


ITEM NO.	PART NUMBER	DESCRIPTION	QTY.
1	SIDE ARM POLE MOUNT	STEEL, SEE SHEET 2	1
2	ANTENNA SLEEVE	STEEL, SEE SHEET 3	1
3	RADOME ATTACHMENT	STEEL, SEE SHEET 3	1
4	15ID RADOME ASSEM	ABS PLASTIC, .080" THICK	1
5	MALLEABLE WASHER	GALVANIZED	2
6	3/4" ALL THREAD 18"L	GALVANIZED	2
7	FW 3/4"	GALVANIZED	4
8	LW 3/4"	GALVANIZED	4
9	HEX NUT 3/4"-10-B-N	GALVANIZED	4

SIDE ARM POLE MOUNT:



GUSSET:



ITEM NO.	PART NUMBER	DESCRIPTION	QTY.
1	CHANNEL	A36 HOT ROLLED STEEL, .250" THICK	1
2	2" PIPE	SCHEDULE 40 STEEL PIPE 2" NOMINAL	1
3	GUSSET	A36 HOT ROLLED STEEL, .250" THICK	4
4	TUBE ARM	A500 RECTANGULAR TUBE 3"X4"X.250"	1

STAMP



UNLESS OTHERWISE SPECIFIED:

DIMENSIONS ARE INCHES
 TOLERANCES:
 FRACTIONAL ±
 ANGULAR: MACH ±
 BEND ±
 TWO PLACE DECIMAL ±.010
 THREE PLACE DECIMAL ±.005

MATERIAL:
 FINISH:

PROPRIETARY AND CONFIDENTIAL

THE INFORMATION CONTAINED IN THIS DRAWING IS THE SOLE PROPERTY OF ELECTRIC TECH CONSTRUCTION, INC. ANY REPRODUCTION IN PART OR AS A WHOLE WITHOUT THE WRITTEN PERMISSION OF ELECTRIC TECH CONSTRUCTION, INC. IS PROHIBITED.

APPROVALS & DATES

NOT FOR CONSTRUCTION UNLESS LABELED AS CONSTRUCTION SET

SITE NUMBER

SITE NAME

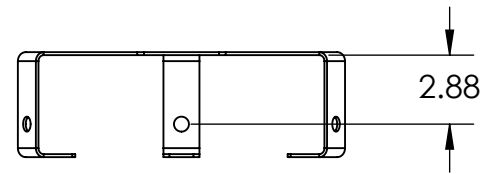
PRODUCT ID #

SIDE ARM POLE MOUNT DETAILS rev B

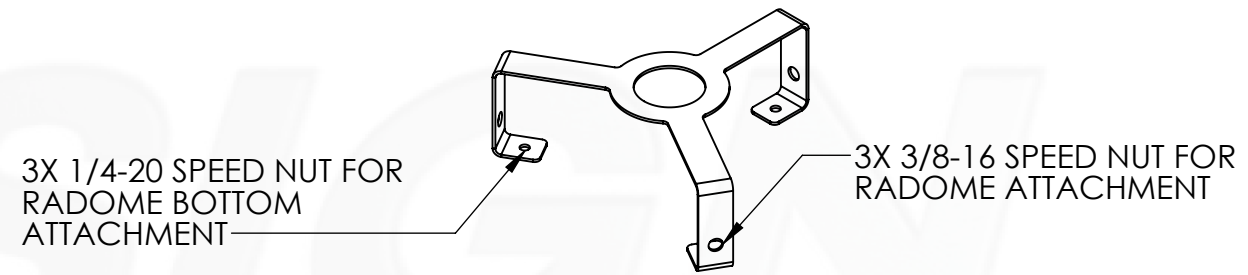
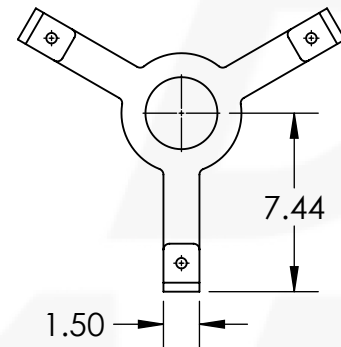
REV A

PRODUCT DESCRIPTION

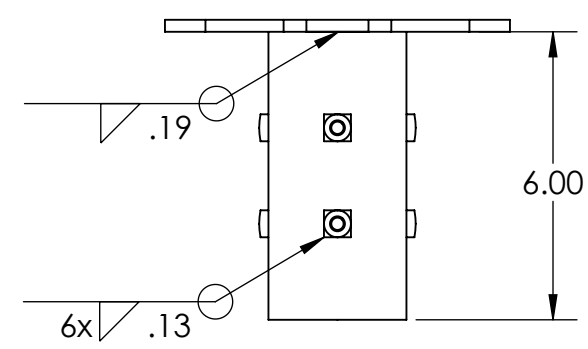
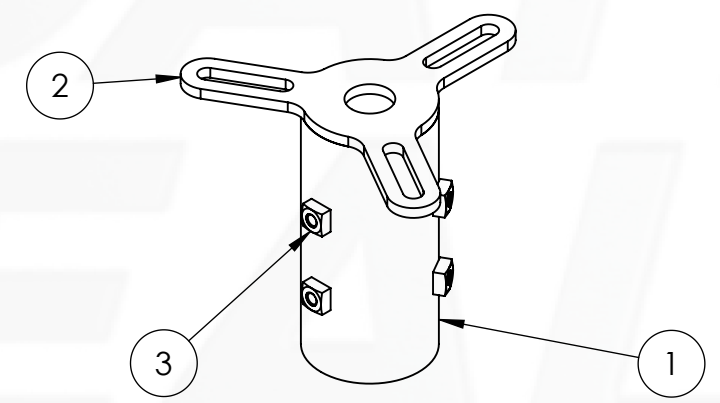
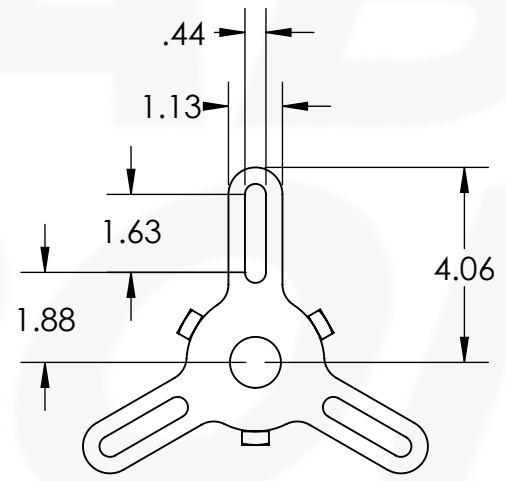
RADOME ATTACHMENT:



MATERIAL: A36 HOT ROLLED STEEL, .125" THICK



ANTENNA SLEEVE:



ITEM NO.	PART NUMBER	DESCRIPTION	QTY.
1	PIPE SLEEVE	SCHEDULE 40 STEEL PIPE 2.5" NOMINAL	1
2	ANTENNA MOUNT PLATE	A36 HOT ROLLED STEEL, .250" THICK	1
3	SQ NUT 0.3125-18-S-N		6

STAMP



UNLESS OTHERWISE SPECIFIED:
 DIMENSIONS ARE INCHES
 TOLERANCES:
 FRACTIONAL ±
 ANGULAR: MACH ±
 BEND ±
 TWO PLACE DECIMAL ±.010
 THREE PLACE DECIMAL ±.005
 MATERIAL:
 FINISH:

PROPRIETARY AND CONFIDENTIAL
 THE INFORMATION CONTAINED IN THIS DRAWING IS THE SOLE PROPERTY OF ELECTRIC TECH CONSTRUCTION, INC. ANY REPRODUCTION IN PART OR AS A WHOLE WITHOUT THE WRITTEN PERMISSION OF ELECTRIC TECH CONSTRUCTION, INC. IS PROHIBITED.

APPROVALS & DATES

NOT FOR CONSTRUCTION UNLESS LABELED AS CONSTRUCTION SET

SITE NUMBER

SITE NAME

PRODUCT ID #

SIDE ARM POLE MOUNT DETAILS rev B

REV A

PRODUCT DESCRIPTION