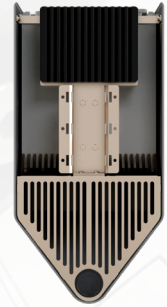




**MS-4415**



**FRONT**



**BACK**



**BOTTOM**



**SIDE**

### Product Summary:

444X Series Radio Mount with Shroud is designed to install on a wide variety of steel poles and wood pole sleds. The mount is designed to hold a radio on the front and a power supply unit on the back. All concealed within an aesthetically pleasing outer shell with venting on bottom, back and open top to maximize airflow and meet city ordinance concealment requirements. Additional space to accommodate (Optional) Fan Unit and four spacer plugs to the back of the radio if needed.

### SPECIFICATIONS

Pole Diameter	N/A	
Material	ABS Plastic & Stainless Steel	
PART DESCRIPTION	ATTACHMENT TYPE	FINISH TYPE
ABS Shroud (SH-4415)	1/4-20 Counter Sunk Stainless Steel Bolt	Primer Coat, Gray
Radio Mount (MT-4415)	3/4" Band Strap	No Finish
Vent Bottom (VT-4415)	1/4-20 Pan Head Stainless Steel Bolt	No Finish