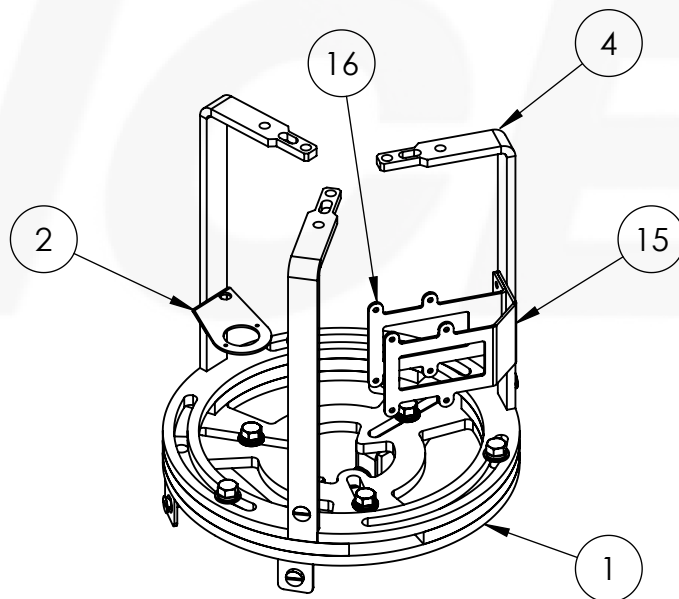


SECTION A-A
SCALE 1 : 6



ITEM NO.	PART NUMBER	QTY.
1	CUP 4G5G POLE ATTACHMENT ASSEM	1
2	CAGE ARM METER MOUNT	1
3	CUP4G5G SKIRT ASSEM	1
4	CUP 4G5G CAGE ASSEM W HOLES	1
5	15ID RADOME ASSEM	1
6	1/2 FLAT WASHER	12
7	1/2 LOCK WASHER	9
8	1/2-13 X 1 3/4 SS HEX	6
9	1/2-13 X 2 SS HEX	3
10	1/2-13 HEX NUT SS	3
11	CSBOLT 0.3750-16x0.625x0.625-S-N	7
12	CR-THMS 0.25-20x0.25x0.25-N	6
13	CSBOLT 0.3750-16x0.4375x0.4375-S-N	2
15	SDX PRIMARY CAGE	1
16	SDX SECONDARY CAGE	1

STAMP



UNLESS OTHERWISE SPECIFIED:
 DIMENSIONS ARE INCHES
 TOLERANCES:
 FRACTIONAL ±
 ANGULAR: MACH ±
 BEND ±
 TWO PLACE DECIMAL ±.010
 THREE PLACE DECIMAL ±.005

MATERIAL:
 FINISH:

PROPRIETARY AND CONFIDENTIAL

THE INFORMATION CONTAINED IN THIS DRAWING IS THE SOLE PROPERTY OF ELECTRIC TECH CONSTRUCTION, INC. ANY REPRODUCTION IN PART OR AS A WHOLE WITHOUT THE WRITTEN PERMISSION OF ELECTRIC TECH CONSTRUCTION, INC. IS PROHIBITED.

APPROVALS & DATES

NOT FOR CONSTRUCTION UNLESS LABELED AS CONSTRUCTION SET

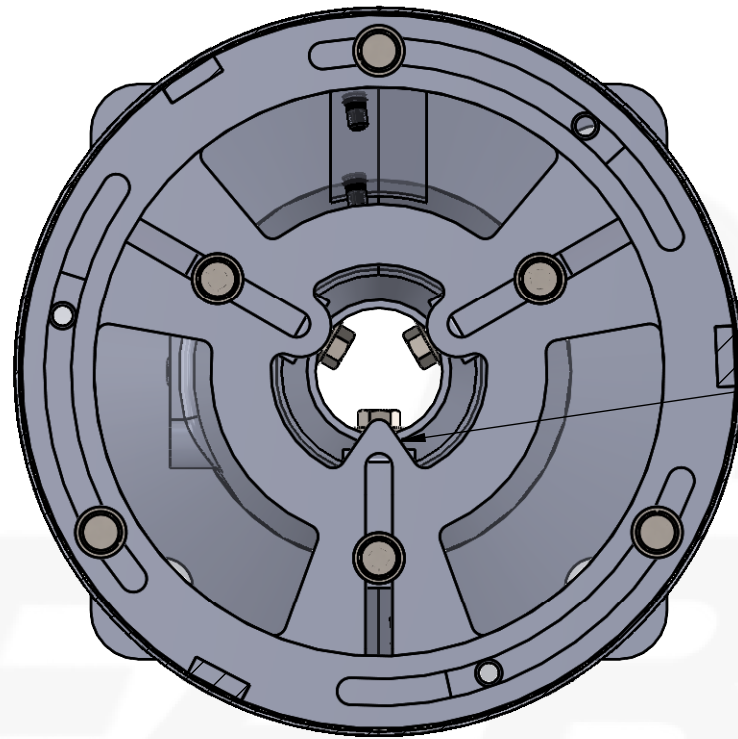
SITE NUMBER

SITE NAME

PRODUCT ID #
 15ID POLE TOP ASSEM

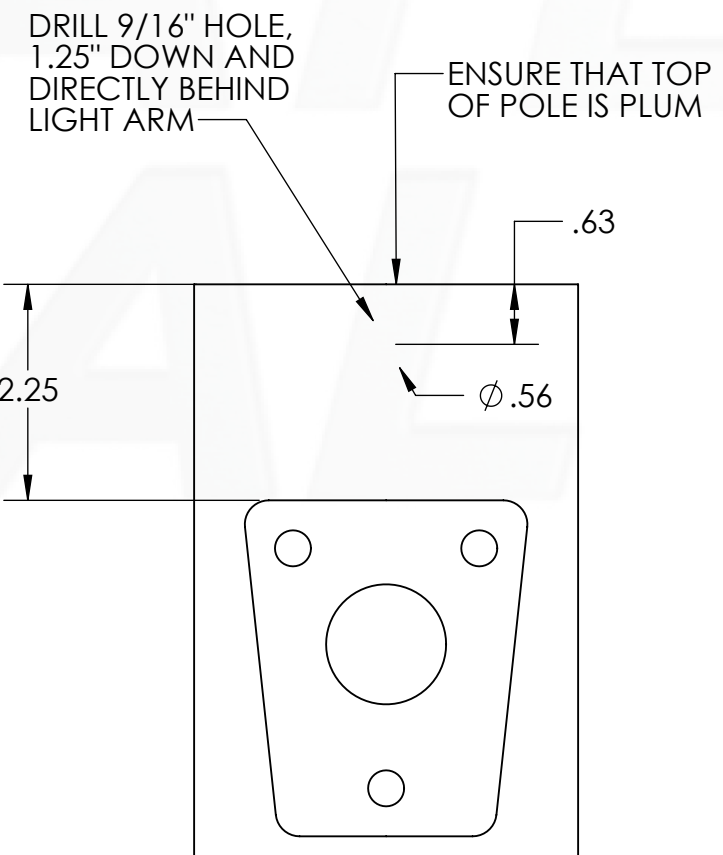
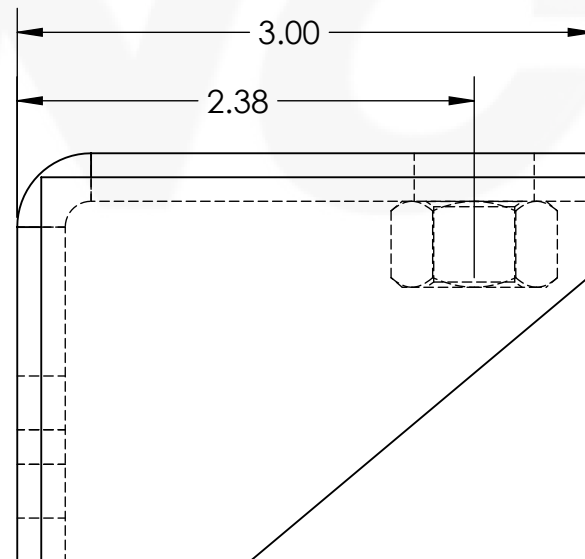
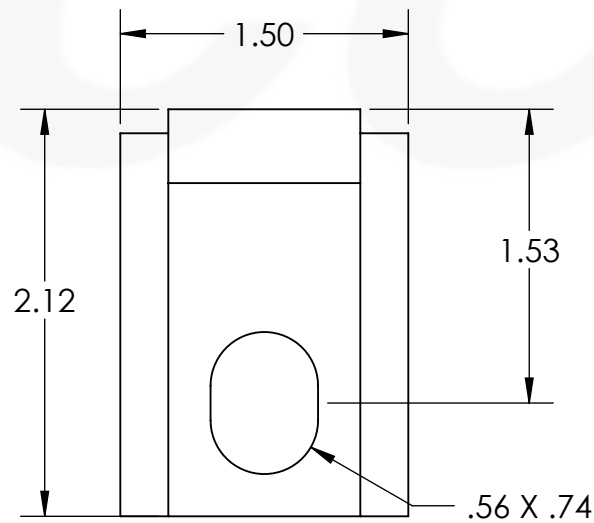
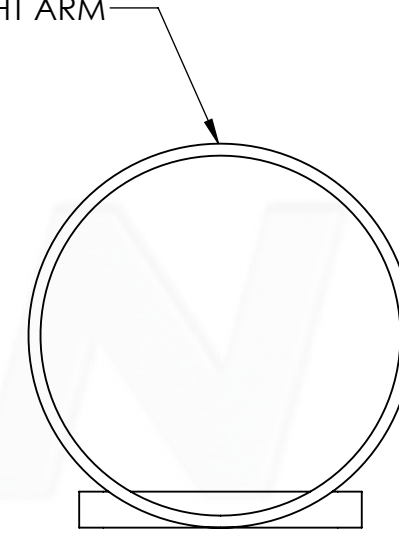
REV | A

PRODUCT DESCRIPTION



WHEN INSTALLING, PLACE POINT IN DIRECTION OF LIGHT ARM

DRILL 9/16" HOLE, 1.25" DOWN AND DIRECTLY BEHIND LIGHT ARM



STAMP



UNLESS OTHERWISE SPECIFIED:

DIMENSIONS ARE INCHES
 TOLERANCES:
 FRACTIONAL ±
 ANGULAR: MACH ±
 BEND ±
 TWO PLACE DECIMAL ±.010
 THREE PLACE DECIMAL ±.005

MATERIAL:
 FINISH:

PROPRIETARY AND CONFIDENTIAL

THE INFORMATION CONTAINED IN THIS DRAWING IS THE SOLE PROPERTY OF ELECTRIC TECH CONSTRUCTION, INC. ANY REPRODUCTION IN PART OR AS A WHOLE WITHOUT THE WRITTEN PERMISSION OF ELECTRIC TECH CONSTRUCTION, INC. IS PROHIBITED.

APPROVALS & DATES

NOT FOR CONSTRUCTION UNLESS LABELED AS CONSTRUCTION SET

SITE NUMBER

SITE NAME

PRODUCT ID #
 15ID POLE TOP ASSEM

REV | A

PRODUCT DESCRIPTION