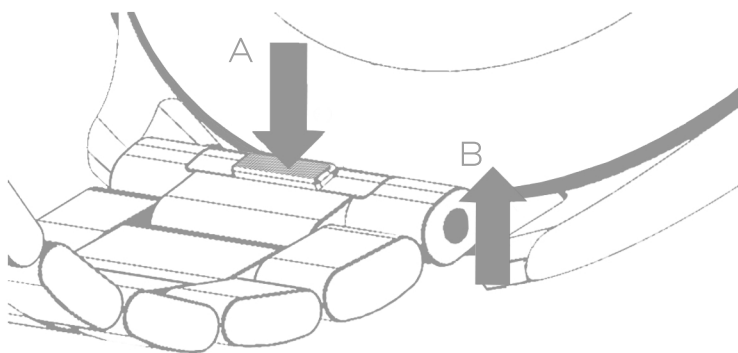
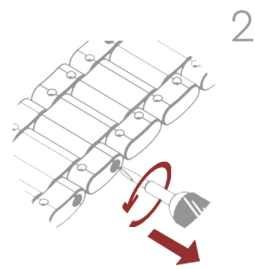


GUIDE TO ADJUST THE METAL BRACELET

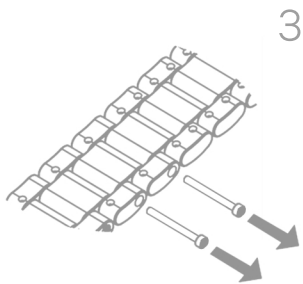


- 1 To remove the bracelet :
- A. Click on the **Safe Release**
 - B. Pull the bracelet upwards to release it out from the lugs

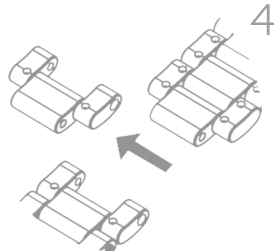
Gently unscrew the screw of the link(s) you wish to remove using the the supplied screwdriver



2



3

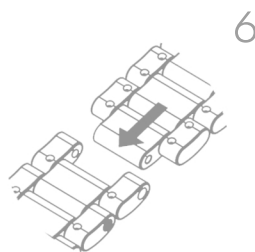


4

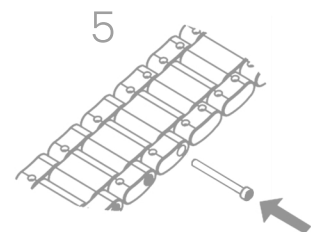
Remove the springbars and screws as shown. Put them in a safe place while you handle the adjustment.

Then take out the desired link(s)

Reassemble the bracelet and replace the spring bars and the screws

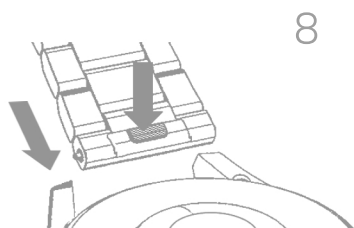


6

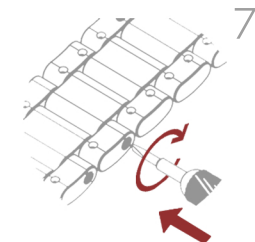


5

Screw the link(s) back in place



8



7

Attach the bracelet to the watch by pressing the **Safe Release** and position it in the lugs