

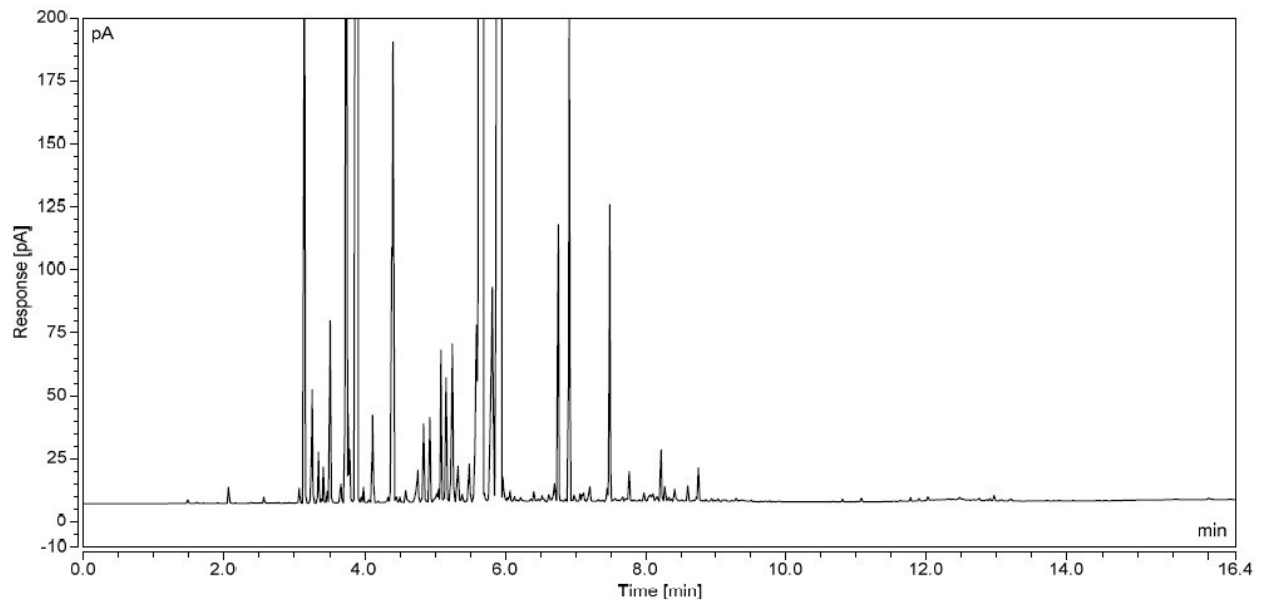
# VINEVIDA

## GCMS ANALYSIS REPORT

### 1. INJECTION DETAILS

Sample ID	35599-1021102-19669-S2
Sample Name	Litsea Cubeba Essential Oil
Column	Silicone-DB1
Carrier Gas	Hydrogen
Injection Date/Time	07/Mar/23 13:44

### 2. CHROMATOGRAM



### 3. PEAK RESULTS

No.	Retention Time (min)	Area (pA*min)	GC Area (%)	Peak Name
5	3.068	0.094	0.03	Alpha-thujene
6	3.143	3.491	1.16	Alpha-pinene
8	3.254	0.771	0.26	Camphene
9	3.344	0.3	0.1	6-Methyl-5-hepten-2-one
10	3.412	0.198	0.07	Sabinene
11	3.467	0.068	0.02	Beta-pinene
12	3.509	1.102	0.37	Myrcene
14	3.739	7.152	2.38	Alpha-phellandrene
15	3.768	0.523	0.17	Alpha-terpinene
16	3.79	0.304	0.1	Para-cymene
17	3.894	56.157	18.7	Limonene + 1,8-Cineole + b-phellandrene
19	3.984	0.089	0.03	Trans-beta-ocimene
20	4.115	0.644	0.21	Gamma-terpinene
23	4.404	4.35	1.45	Terpinolene + Linalool
31	4.84	0.574	0.19	Citronellal
32	4.928	0.53	0.18	Cis-isocitral
37	5.087	0.949	0.32	Trans-isocitral
38	5.159	0.828	0.28	Terpinen-4-ol
39	5.227	0.018	0.01	Alpha-terpineol
40	5.252	1.323	0.44	Gamma-terpineol
45	5.592	1.983	0.66	Citronellol + Nerol

46	5.677	91.024	30.31	Neral
48	5.817	2.348	0.78	Geraniol
49	5.94	113.355	37.74	Geranial
68	7.49	1.955	0.65	Beta-caryophyllene
		290.13	96.61	

## **Disclaimer & Caution**

This information is provided for documentation purposes only. Please note that this report is meant to represent the general quality of essential oil and is not lot specific due to high volume turnover. Specific lots may vary slightly due to the inherent naturalness of the product.

Prior to use, please refer to all relevant technical information to the product. The complete range of conditions or methods of use are beyond our control therefore we do not assume any responsibility and expressly disclaim any liability for any use of this product. Information contained herein is believed to be true and accurate however, all statements or suggestions are made without warranty, expressed or implied, regarding accuracy of the information, the hazards connected with the use of the material or the results to be obtained from the use thereof. Compliance with all applicable federal, state, and local laws and local regulations remains the responsibility of the user. The liability of VINEVIDA is limited to the value of the goods and does not include any consequential loss. VINEVIDA will not be held liable for any errors or delays in the content, or for any actions taken in reliance thereon. VINEVIDA releases itself from all liabilities, and shall not be held responsible for any damages resulting from use or reliance upon this information.