

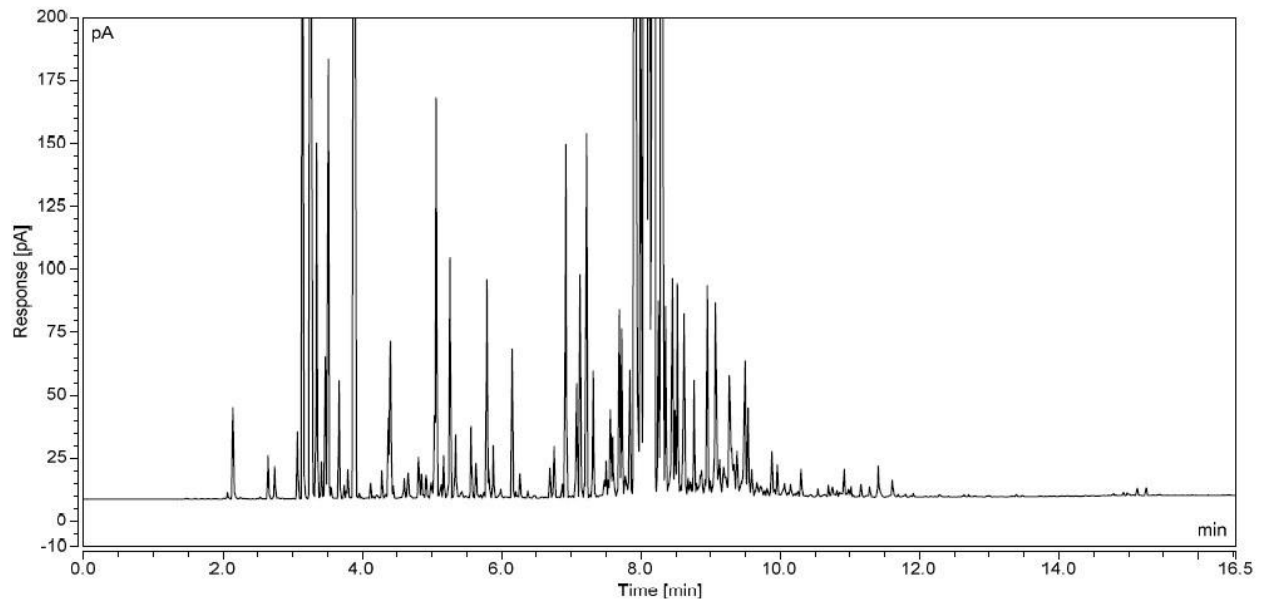
VINEVIDA

GCMS ANALYSIS REPORT

1. INJECTION DETAILS

Sample ID	28050-1020296-18963-S2
Sample Name	Ginger Root (Dried) Essential Oil
Column	Silicone-DB1
Carrier Gas	Hydrogen
Injection Date/Time	15/Nov/22 8:50

2. CHROMATOGRAM



3. PEAK RESULTS

No.	Retention Time (min)	Area (pA*min)	GC Area (%)	Peak Name
1	2.068	0.039	0.01	Toluene
2	2.144	0.603	0.19	Hexanal
3	2.649	0.257	0.08	Methyl amyl ketone (aka 2-Heptanone)
4	2.744	0.205	0.06	2-Heptanol
5	3.069	0.417	0.13	Tricyclene
6	3.145	6.029	1.86	Alpha-pinene
7	3.261	20.409	6.3	Camphene
8	3.347	2.084	0.64	6-Methyl hept-5-en-2-one
9	3.416	0.208	0.06	Sabinene
10	3.471	0.833	0.26	Beta-pinene
11	3.514	2.824	0.87	3-Octanal + Myrcene
13	3.67	0.738	0.23	Alpha-phellandrene
14	3.743	0.077	0.02	Delta-3-carene
15	3.773	0.037	0.01	Alpha-terpinene
16	3.795	0.166	0.05	Para-cymene
17	3.89	24.115	7.44	Limonene + 1,8-Cineole + b-phellandrene
18	3.959	0.029	0.01	Trans-beta-ocimene
19	4.12	0.092	0.03	Gamma-terpinene
20	4.283	0.166	0.05	Methyl heptyl ketone (aka 2-Nonanone)
22	4.376	0.484	0.15	Rosefuran

23	4.408	1.622	0.5	Terpinolene + Linalool
29	4.806	0.308	0.1	Camphor
30	4.851	0.165	0.05	Citronellal
34	5.037	0.514	0.16	Isoborneol
35	5.062	2.658	0.82	Borneol
38	5.168	0.269	0.08	Terpinen-4-ol
39	5.231	0.034	0.01	Alpha-terpineol
40	5.259	1.568	0.48	n-Decanal
44	5.561	0.467	0.14	Citronellol
45	5.633	0.246	0.08	Neral
49	5.791	1.452	0.45	Geraniol
51	5.882	0.334	0.1	Geranial
53	6.154	0.953	0.29	2-Undecanone
58	6.693	0.185	0.06	Citronellyl propionate
59	6.754	0.366	0.11	Delta-elemene
60	6.874	0.097	0.03	Vanillin
61	6.923	2.546	0.79	Geranyl acetate
62	7.077	0.849	0.26	Cycloisosativene
63	7.128	1.495	0.46	Alpha-copaene
66	7.22	2.427	0.75	Beta-elemene
76	7.69	1.304	0.4	Trans-beta-farnesene
81	7.92	23.455	7.24	Alpha-D-curcumene
83	7.995	4.753	1.47	Germacrene D
84	8.084	100.152	30.91	Alpha-zingiberene

85	8.123	16.265	5.02	Alpha-farnesene
86	8.186	27.77	8.57	Beta-bisabolene
88	8.309	40.501	12.5	Beta-sesquiphellandrene
93	8.525	1.549	0.48	Trans-nerolidol
		294.116	90.76	

Disclaimer & Caution

This information is provided for documentation purposes only. Please note that this report is meant to represent the general quality of essential oil and is not lot specific due to high volume turnover. Specific lots may vary slightly due to the inherent naturalness of the product.

Prior to use, please refer to all relevant technical information to the product. The complete range of conditions or methods of use are beyond our control therefore we do not assume any responsibility and expressly disclaim any liability for any use of this product. Information contained herein is believed to be true and accurate however, all statements or suggestions are made without warranty, expressed or implied, regarding accuracy of the information, the hazards connected with the use of the material or the results to be obtained from the use thereof. Compliance with all applicable federal, state, and local laws and local regulations remains the responsibility of the user. The liability of VINEVIDA is limited to the value of the goods and does not include any consequential loss. VINEVIDA will not be held liable for any errors or delays in the content, or for any actions taken in reliance thereon. VINEVIDA releases itself from all liabilities, and shall not be held responsible for any damages resulting from use or reliance upon this information.