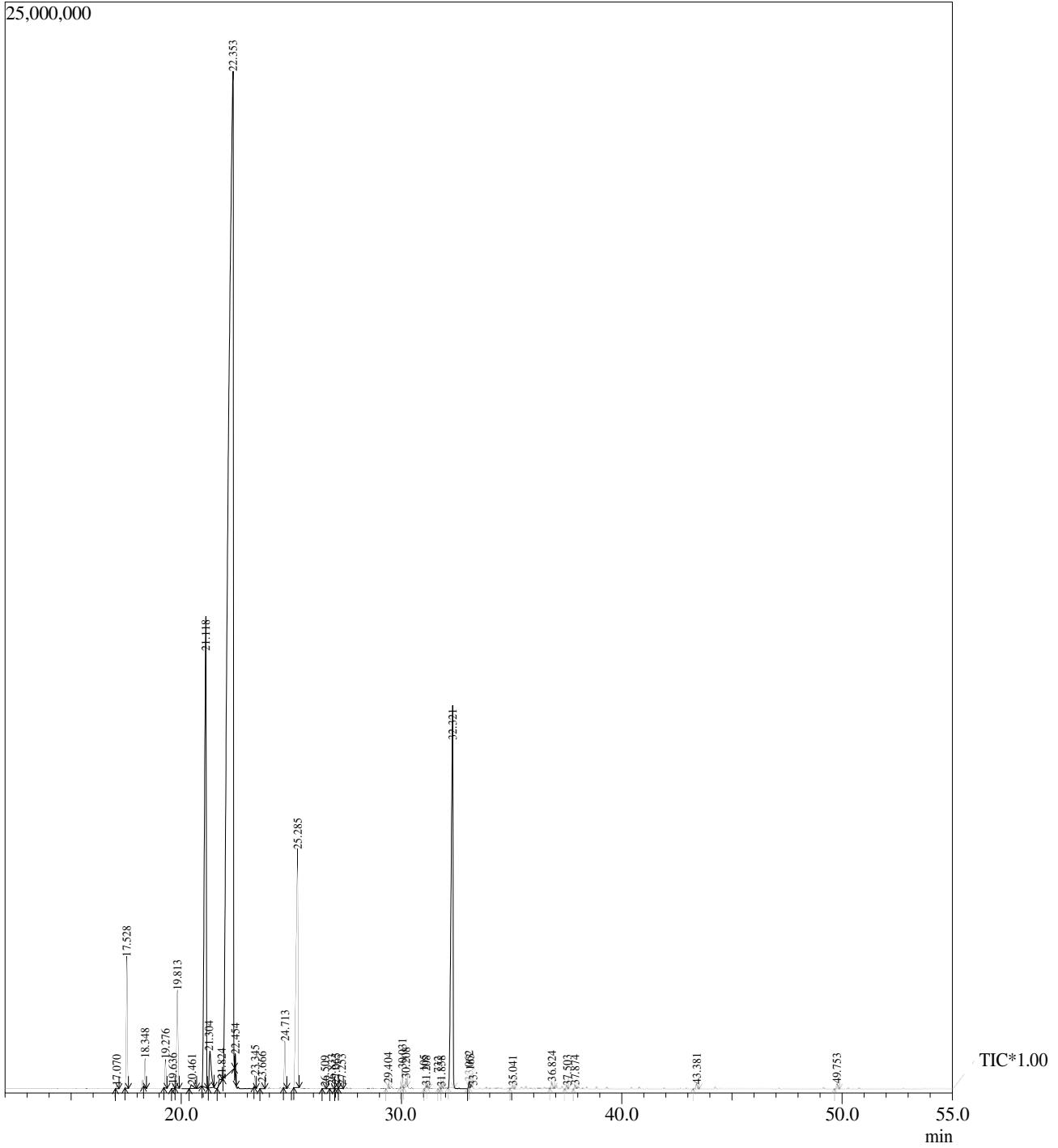


SampleInformation

AnalyzedbyAn :\$.Admn.\$
 ameMethodFil :GrapeFruitoil
 e :D:\GCMS\MethodFile\Essentialoil.qgm



Peak#	R.Time	Area	Area%	PeakReportTIC Name
1	17.070	235320	0.04	Alpha-thujene
2	17.528	10953612	1.95	Pinenealpha
3	18.348	2346615	0.42	Camphene
4	19.276	2606076	0.46	Sabinene
5	19.636	402158	0.07	Pinenebeta
6	19.813	10040273	1.79	Myrcene
7	20.461	702811	0.12	Octanal
8	21.118	63645698	11.32	Delta-3-carene
9	21.304	5464665	0.97	Isocineole
10	21.824	734125	0.13	Cymenepara
11	22.353	365465285	64.98	D-Limonene
12	22.454	1106736	0.20	Eucalyptol
13	23.345	874658	0.16	gamma-Terpinene
14	23.666	534340	0.10	1-Octanol
15	24.713	4008392	0.71	Alpha-terpinolene
16	25.285	32959393	5.86	Linalool
17	26.509	185983	0.03	Mentha-2,8-dien-1-oltrans-para
18	26.833	318066	0.06	Dihydrolinalool
19	27.065	367904	0.07	Limoneneoxidecis
20	27.253	387557	0.07	Limoneneoxidetrans
21	29.404	394250	0.07	Terpinen-4-ol
22	30.031	1462664	0.26	alpha-Terpineol
23	30.208	657379	0.12	Decanal
24	31.105	164448	0.03	cis-Carveol
25	31.208	97518	0.02	Linaloolbutyrate
26	31.732	134135	0.02	Carveoltrans
27	31.858	149028	0.03	Neral
28	32.321	53505833	9.51	Linalylacetate
29	33.062	437649	0.08	Dihydrolinalool
30	33.163	95622	0.02	Citrala
31	35.041	198020	0.04	trans-p-Mentha-2,8-dienol
32	36.824	510187	0.09	Alpha-Terpinylacetate
33	37.503	249882	0.04	Verbenol
34	37.874	264203	0.05	Nerylacetate
35	43.381	391381	0.07	Valencene
36	49.753	393733	0.07	Cembrene
		562445599	100.00	