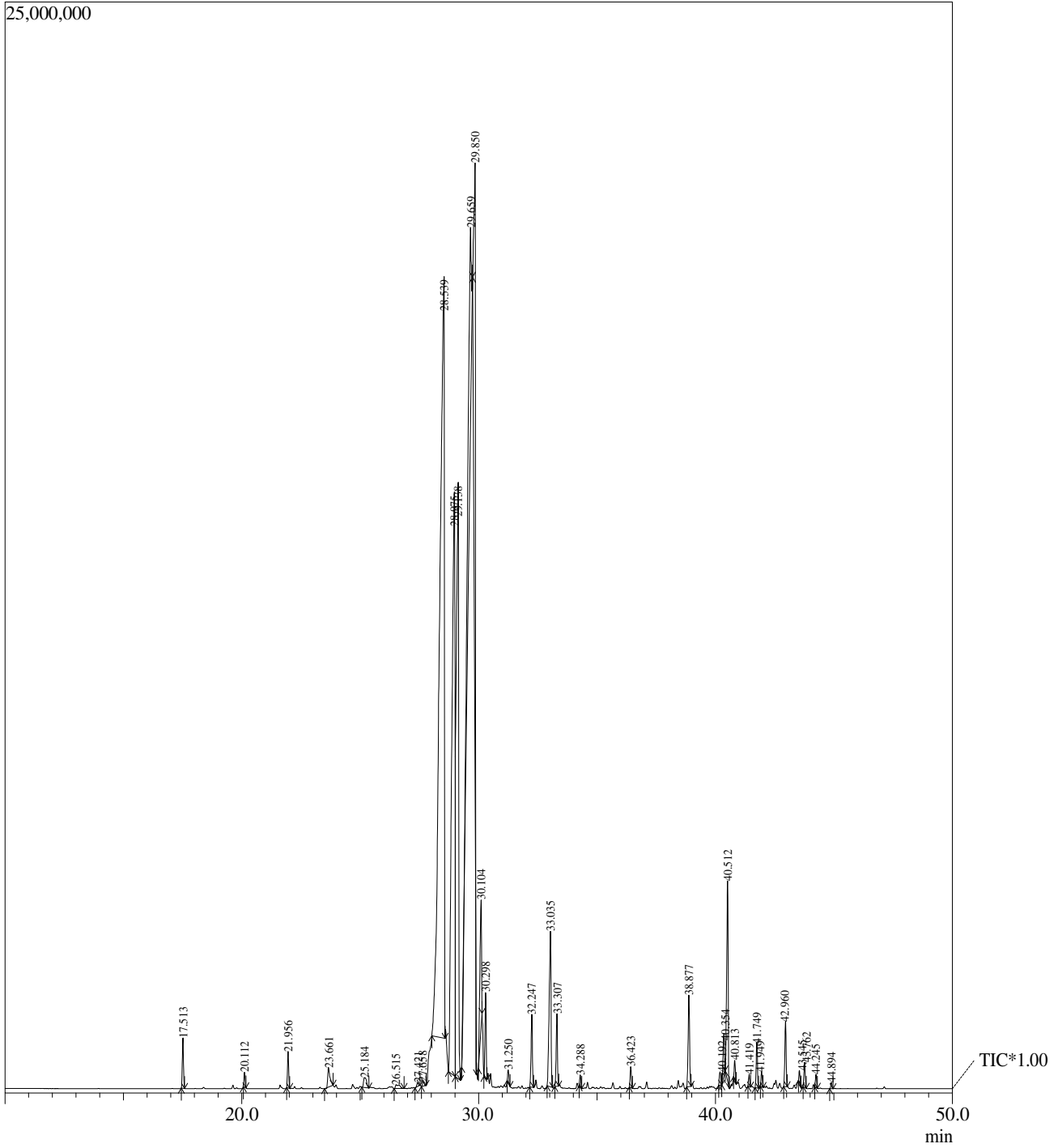


SampleInformation

AnalyzedbyAn :\$Admn.\$
 ameMethodFil :Peppermintoil-Natural
 e :D:\GCMS\MethodFile\Essentialoil.qgm



Peak#	R.Time	Area	Area%	Name
1	17.513	3942040	0.57	Alpha-pinene
2	20.112	1070552	0.15	Hexanoethyl
3	21.956	2892639	0.42	D-Limonene
4	23.661	2929518	0.42	1-Octanol
5	25.184	2002148	0.29	Linalool
6	26.515	1081236	0.16	Gamma-pyronene
7	27.421	372124	0.05	cis-p-Mentha-2,8-dien-1-ol
8	27.658	480651	0.07	Sabinylacetate
9	28.539	239830625	34.72	Menthone
10	28.975	124122172	17.97	Isomenthone
11	29.138	98056311	14.20	Neo-menthol
12	29.659	50550401	7.32	Iso-Menthol
13	29.850	54213856	7.85	Menthol
14	30.104	14836997	2.15	Neo-iso-Menthol
15	30.298	6852273	0.99	Alpha-terpineol
16	31.250	994390	0.14	Citronellol
17	32.247	6556652	0.95	Pulegone
18	33.035	19350879	2.80	Piperitone
19	33.307	6325698	0.92	1-Decanol
20	34.288	834023	0.12	Menthylacetate
21	36.423	1700006	0.25	gamma-Elementene
22	38.877	9033150	1.31	beta-Bourbonene
23	40.192	1303451	0.19	Beta-ionone
24	40.354	4173942	0.60	Beta-Copaene
25	40.512	19829336	2.87	Trans-Caryophyllene
26	40.813	1437313	0.21	Cis-Muurola-4(14),5-diene
27	41.419	918269	0.13	Amorpheneepsylon
28	41.749	3874365	0.56	Cadinene-gamma
29	41.949	1211931	0.18	Alpha-Humulene
30	42.960	5547974	0.80	GermacreneD
31	43.545	862786	0.12	Bicyclogermacrene
32	43.762	2111404	0.31	Amorpheneepsylon
33	44.245	959935	0.14	Beta-cadinene
34	44.894	475302	0.07	Bisabolene(Z)-alpha
		690734349	100.00	