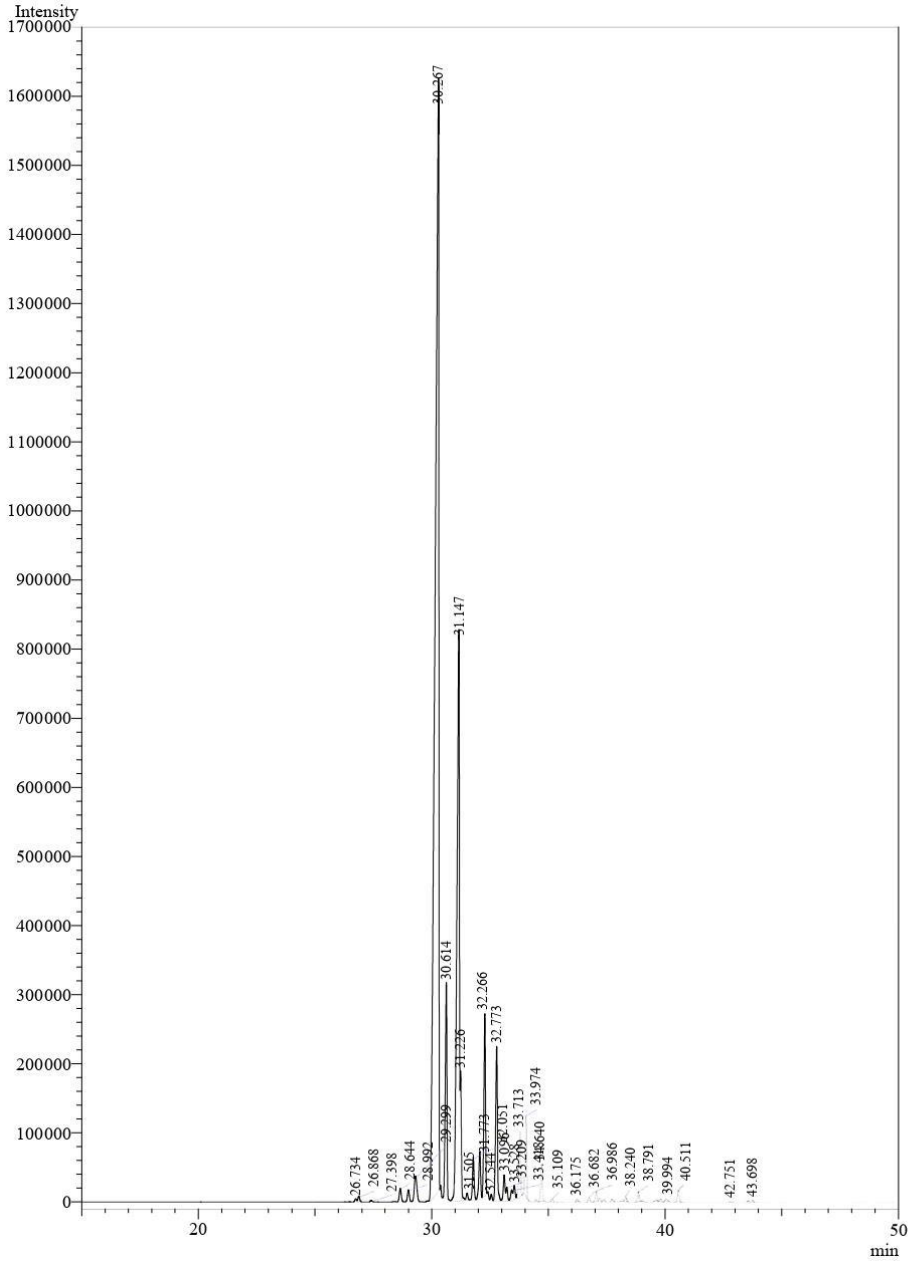




## GCMS Analysis

<b>Product Name</b>	Patchouli Essential Oil
<b>Botanical Name</b>	Pogostemon Cablin
<b>Country of Origin</b>	Indonesia
<b>Storing Precautions</b>	Store in cool, dry place in tightly sealed containers
<b>Shelf Life</b>	3 year(s) or longer if stored properly
<b>Date of Testing</b>	03/28/2022

SampleName :PatchouliStandardOil



## Peak Report TIC

Peak#	Ret.Time	Area	Area%	Name
1	26.734	22493	0.0710	Bicyclogermacrene
2	26.868	48191	0.1522	Elemenedelta
3	27.398	15430	0.0487	Cubebenealpha
4	28.644	115635	0.3651	Copaenealpha
5	28.992	98260	0.3102	Patchoulenebeta
6	29.299	292604	0.9239	Elemenebeta
7	30.267	17580671	55.5086	Gurjunenealpha
8	30.614	1545432	4.8795	Caryophyllene(E)
9	31.147	5949455	18.7846	Calerene
10	31.226	701407	2.2146	Alpha.-Guaiene
11	31.505	41894	0.1323	Guaia-1(10),11-diene
12	31.773	295898	0.9343	Seychellene
13	32.051	349207	1.1026	Humulenealpha
14	32.266	1242491	3.9230	Aromadendrene
15	32.544	33747	0.1066	Allo-aromadendrene
16	32.773	1196785	3.7787	Gurjunenegamma
17	33.096	184611	0.5829	Germacrene D
18	33.209	88023	0.2779	Selina-4,11-diene
19	33.418	66911	0.2113	Selinenebeta
20	33.528	98185	0.3100	Viridiflorene
21	33.713	449385	1.4189	Germacrene B
22	33.974	550748	1.7389	Delta-guaiene
23	34.640	275182	0.8688	Maalienealpha
24	35.109	38280	0.1209	Aristola-1(10),8-diene

25	36.175	22563	0.0712	Pogostol
26	36.682	42990	0.1357	Viridiflorol
27	36.986	73266	0.2313	Spathulenol
28	38.240	45513	0.1437	Globulol
29	38.791	71898	0.2270	Epiglobulol
30	39.994	19333	0.0610	Beta-eudesmol
31	40.511	88217	0.2785	Rosifoliol
32	42.751	10185	0.0322	Cadin-4-en-10-ol
33	43.698	17067	0.0539	Patchouli alcohol
Total		31671957	100.0000	

## **Disclaimer & Caution**

This information is provided for documentation purposes only. Please note that this report is meant to represent the general quality of essential oil and is not lot specific due to high volume turnover. Specific lots may vary slightly due to the inherent naturalness of the product.

Prior to use, please refer to all relevant technical information to the product. The complete range of conditions or methods of use are beyond our control therefore we do not assume any responsibility and expressly disclaim any liability for any use of this product. Information contained herein is believed to be true and accurate however, all statements or suggestions are made without warranty, expressed or implied, regarding accuracy of the information, the hazards connected with the use of the material or the results to be obtained from the use thereof. Compliance with all applicable federal, state, and local laws and local regulations remains the responsibility of the user. The liability of VINEVIDA is limited to the value of the goods and does not include any consequential loss. VINEVIDA will not be held liable for any errors or delays in the content, or for any actions taken in reliance thereon. VINEVIDA releases itself from all liabilities, and shall not be held responsible for any damages resulting from use or reliance upon this information.