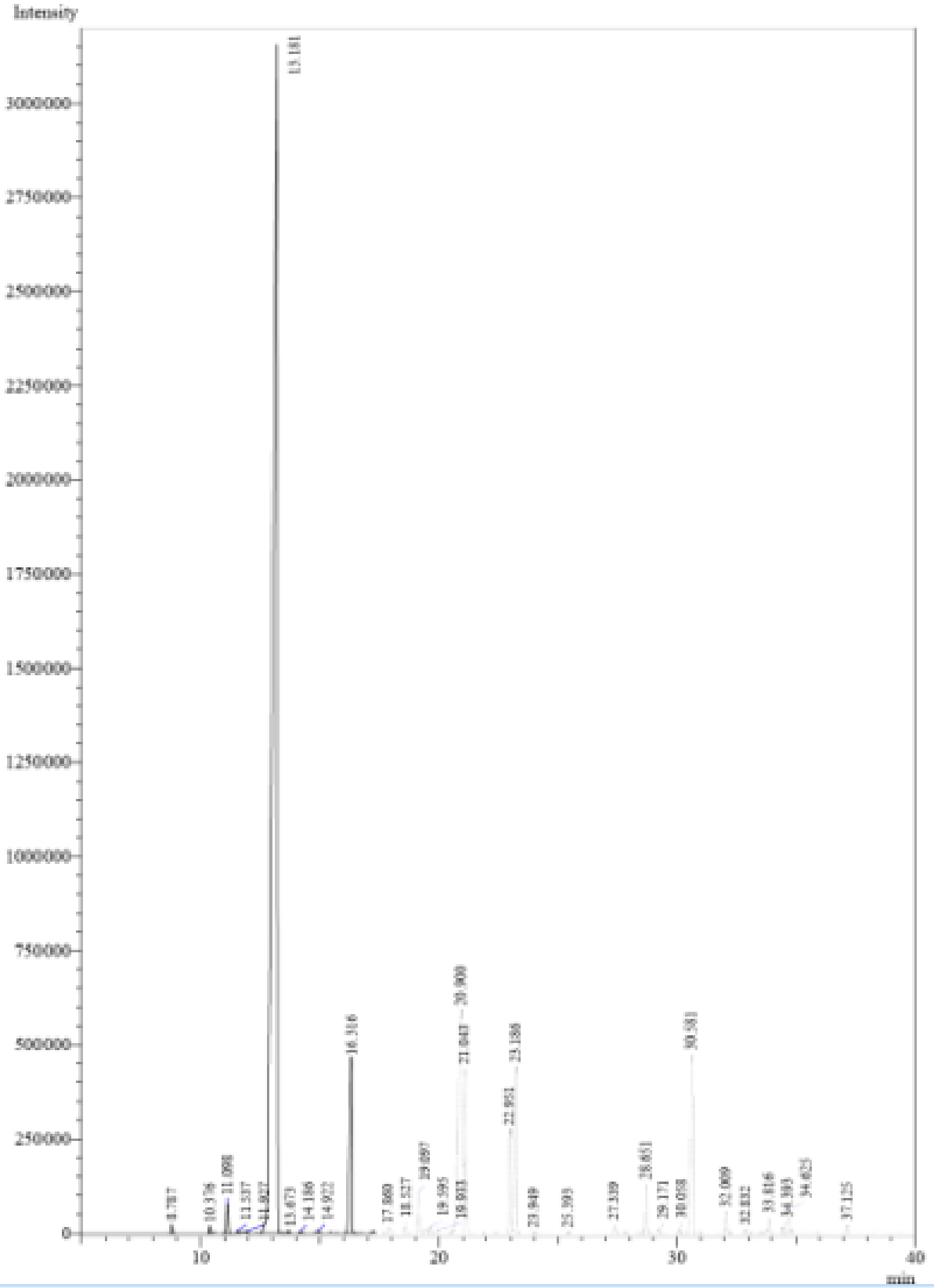




GCMS Analysis

Product Name	Palo Santo Essential Oil
Botanical Name	Bursera graveolens
Country of Origin	Ecuador
Storing Precautions	Store in cool, dry place in tightly sealed containers
Shelf Life	3 year(s) or longer if stored properly
Date of Testing	03/28/2022



Peak Report TIC

Peak#	Ret.Time	Area	Area%	Name
1	8.787	83024	0.1312	Alpha-pinene
2	10.376	76504	0.1209	Beta-pinene
3	11.098	324295	0.5125	Myrcene
4	11.537	31340	0.0495	Hexanol ethyl
5	11.927	21359	0.0338	Neoisothujol
6	13.181	40207333	63.5368	limonene
7	13.673	29164	0.0461	beta-Ocimene
8	14.186	18693	0.0295	Terpinenegamma
9	14.922	28242	0.0446	Octanol <n->
10	16.316	2972380	4.6970	Linalool
11	17.860	125739	0.1987	Terpin-3-en-1-ol
12	18.527	70221	0.1110	Terpineolbeta-cis
13	19.097	529521	0.8368	Menthofuran
14	19.595	84501	0.1335	Isoborneol
15	19.933	50618	0.0800	Terpinen-4-ol
16	20.900	6893895	10.8939	Alpha-terpineol
17	21.043	3098802	4.8968	Neodihydrocarveol
18	22.951	1439225	2.2743	Carvone
19	23.186	2421402	3.8264	Linalylacetate
20	23.949	31258	0.0494	Dihydrolinalool
21	25.393	18566	0.0293	Thymol
22	27.339	137761	0.2177	Neoisopulegol hydrate
23	28.651	645399	1.0199	Copaenealpha
24	29.171	65651	0.1037	Cubebenebeta

25	30.058	71093	0.1123	Longifolene
26	30.581	2752737	4.3500	Caryophyllene(E)
27	32.009	288943	0.4566	Alphahumuene
28	32.832	44398	0.0702	Muurolenegamma
Total		62562064	100.00	

Disclaimer & Caution

This information is provided for documentation purposes only. Please note that this report is meant to represent the general quality of essential oil and is not lot specific due to high volume turnover. Specific lots may vary slightly due to the inherent naturalness of the product.

Prior to use, please refer to all relevant technical information to the product. The complete range of conditions or methods of use are beyond our control therefore we do not assume any responsibility and expressly disclaim any liability for any use of this product. Information contained herein is believed to be true and accurate however, all statements or suggestions are made without warranty, expressed or implied, regarding accuracy of the information, the hazards connected with the use of the material or the results to be obtained from the use thereof. Compliance with all applicable federal, state, and local laws and local regulations remains the responsibility of the user. The liability of VINEVIDA is limited to the value of the goods and does not include any consequential loss. VINEVIDA will not be held liable for any errors or delays in the content, or for any actions taken in reliance thereon. VINEVIDA releases itself from all liabilities, and shall not be held responsible for any damages resulting from use or reliance upon this information.