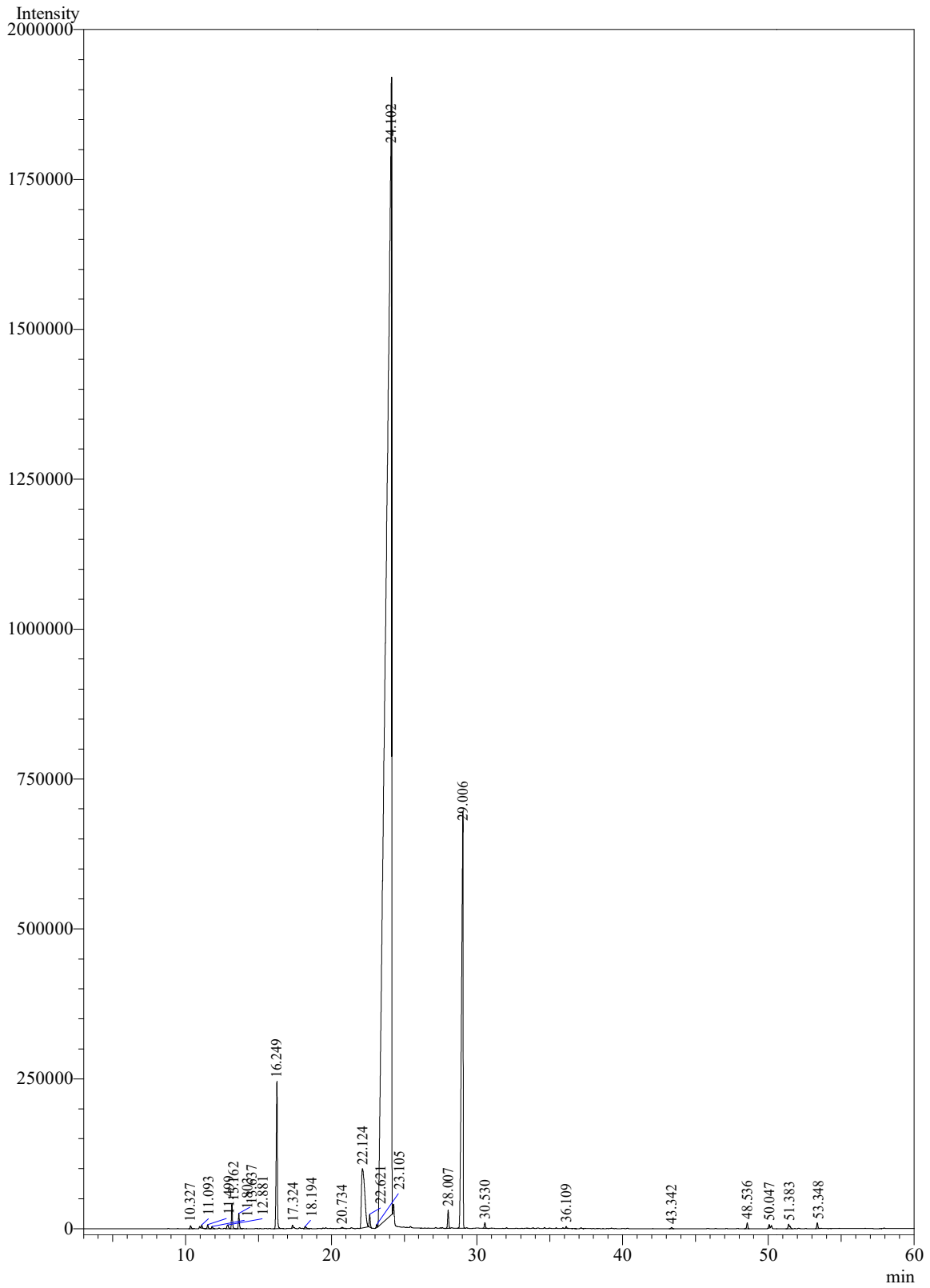


Sample Name: Palmarosa Oil



PeakTable -Channel 1

Peak#	Ret.Time	Area	Area%	Name
1	10.327	26717	0.0438	1,3,5-Cycloheptatriene,3,7,7-trimethyl
2	11.093	21820	0.0358	Myrcene
3	11.499	32291	0.0530	Terpinolene
4	11.803	19677	0.0323	Alpha-phellandrene
5	12.881	45043	0.0739	Phellandrenebeta
6	13.162	185516	0.3044	Trans betaocimene
7	13.637	117768	0.1933	Cis betaocimene
8	16.249	1333664	2.1887	Linalool
9	17.324	23289	0.0382	Menth-2-en-1oltrans-para
10	18.194	28574	0.0469	Menth-2-en-1olcis-para
11	20.734	18156	0.0298	Isononylacetate
12	22.124	1558758	2.5581	Nerol
13	22.621	106156	0.1742	trans-Citral
14	23.105	23597	0.0387	Linalylformate
15	24.102	51655816	84.7720	Geraniol
16	28.007	153056	0.2512	Nerylacetate
17	29.006	5313797	8.7204	Geranyl acetate
18	30.530	52006	0.0853	Caryophyllene(E)
19	36.109	18172	0.0298	Geranyl butyrate
20	43.342	11255	0.0185	Geraniol hexanoate
21	48.536	50902	0.0835	Farnesol
22	50.047	29517	0.0484	Neronecis
23	51.383	59003	0.0968	Farnesolisomera
24	53.348	50450	0.0828	Farnesolisomerb
Total		60935000	100.0000	