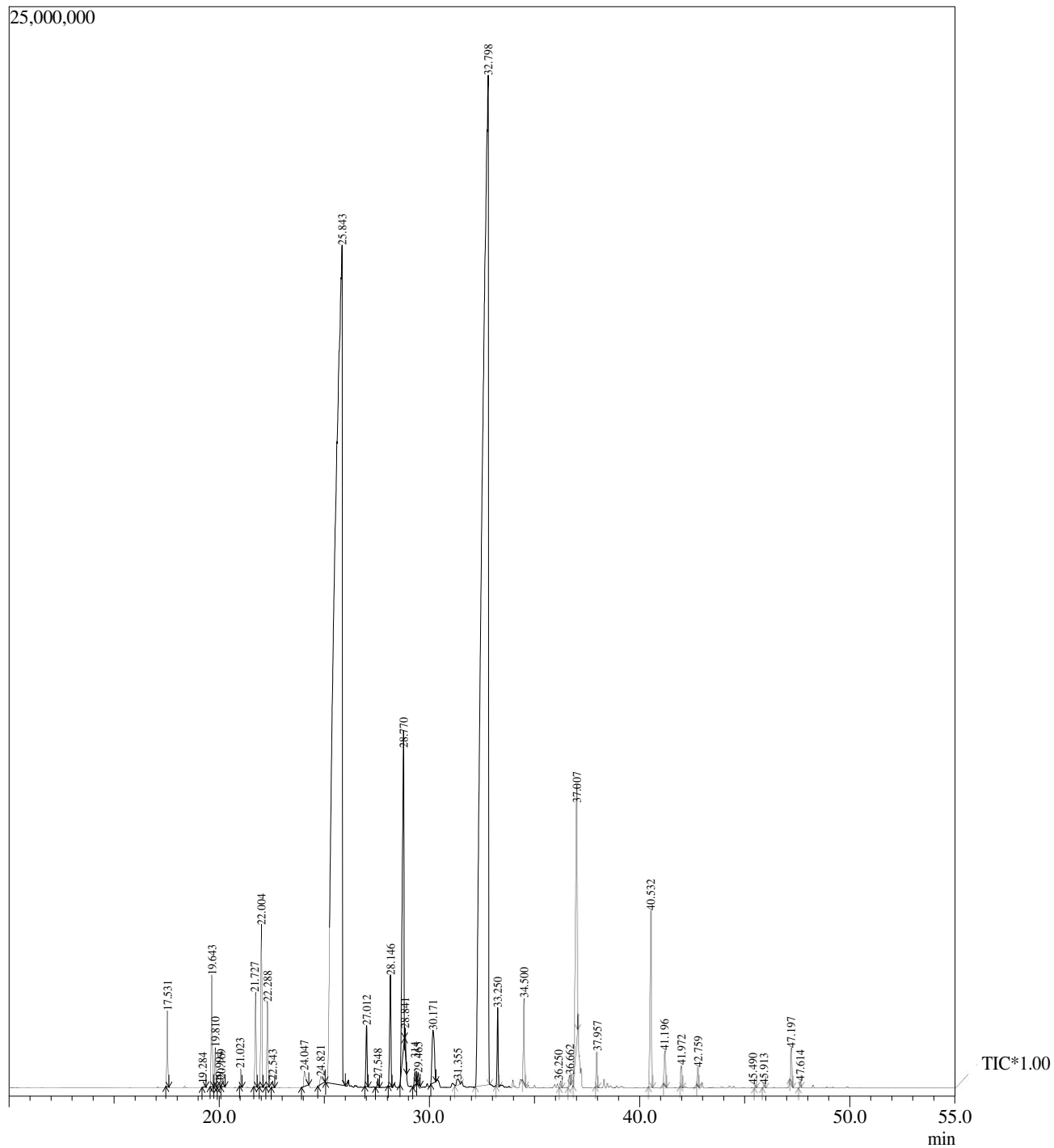


SampleInformation

AnalyzedbyAn :\$Admn.\$  
 ameMethodFil :\$Organic\$  
 e :Lavenderoil  
 :D:\GCMS\MethodFile\Essentialoil.qgm



Peak#	R.Time	Area	Area%	Name
1	17.531	6022503	0.51	Pinenealpha
2	19.284	304765	0.03	Sabinene
3	19.643	9761112	0.83	Beta-pinene
4	19.810	3002880	0.26	Myrcene
5	19.994	387665	0.03	Hept-5-en-2-ol6-methyl
6	20.169	647689	0.06	Hexanoethyl-
7	21.023	1384952	0.12	Delta-3-Carene
8	21.727	8252595	0.70	Para-Cymene
9	22.004	14751037	1.26	D-Limonene
10	22.288	7178993	0.61	Eucalyptol
11	22.543	562238	0.05	Ocimene(E)-beta
12	24.047	2698357	0.23	cis-Linalooloxide
13	24.821	1602184	0.14	trans-Linalooloxide
14	25.843	490145085	41.83	Linalool
15	27.012	5507012	0.47	Dihydrolinalool
16	27.548	688861	0.06	1-Hexene,2,5,5-trimethyl-
17	28.146	10733483	0.92	Camphor
18	28.770	40382147	3.45	4-Methylhexylacetate
19	28.841	1379289	0.12	Isoborneol
20	29.314	1257027	0.11	Menthol
21	29.465	1201280	0.10	Isocamphopinone
22	30.171	9643326	0.82	Alpha-terpineol
23	31.355	1042865	0.09	beta-Terpinylacetate
24	32.798	475136618	40.55	Linalylacetate
25	33.250	5843453	0.50	Dihydrolinalool
26	34.500	6895091	0.59	Isobornylacetate
27	36.250	588144	0.05	8-p-Menthen-2-ylacetatetrans
28	36.662	840828	0.07	Limonenedioxide
29	37.007	32942819	2.81	Alpha-terpinylacetate
30	37.957	2695800	0.23	Geranylacetate
31	40.532	18017702	1.54	Trans-Caryophyllene
32	41.196	3424233	0.29	Coumarin
33	41.972	1690356	0.14	Alpha-humulene
34	42.759	1348083	0.12	Linalool(Z)-8-hydroxy
35	45.490	222684	0.02	Elemolalpha
36	45.913	313864	0.03	Longifolol
37	47.197	2701251	0.23	Caryophylleneoxide
38	47.614	505473	0.04	Viridiflorol
		1171703744	100.00	