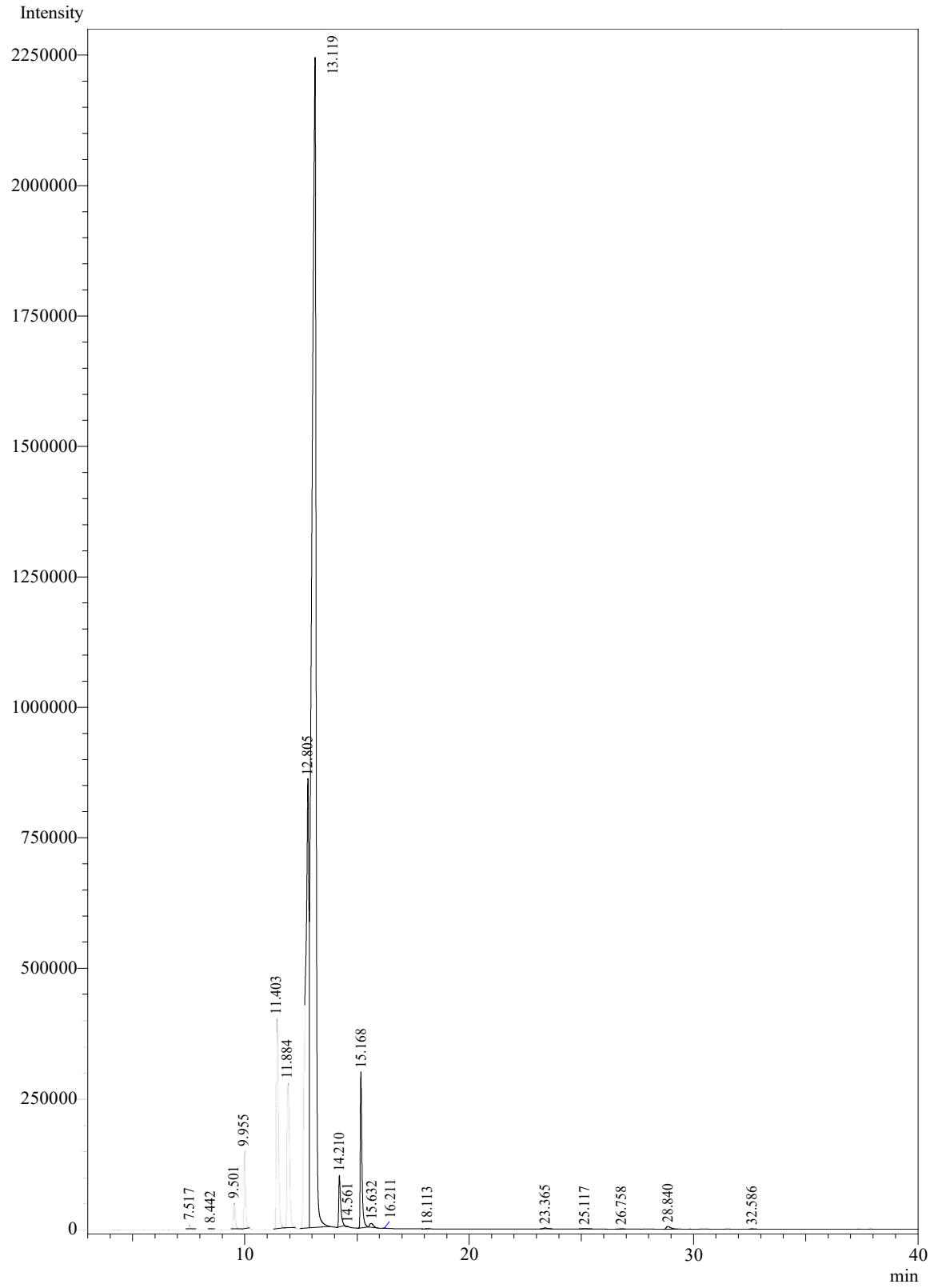


Sample Name: Organic Eucalyptus Globulus Oil



PeakTable -Channel 1

Peak#	Ret.Time	Area	Area%	Name
1	7.517	60711	0.1272	Alpha-Pinene
2	8.442	23138	0.0485	Camphene
3	9.501	304633	0.6381	Pinenebeta
4	9.955	749026	1.5689	Sabinene
5	11.403	2510590	5.2588	Myrcene
6	11.884	2147004	4.4972	Terpinenealpha
7	12.805	10669589	22.3489	Limonene
8	13.119	28950238	60.6402	Eucalyptol
9	14.210	585485	1.2264	Terpinenegamma
10	14.561	3728	0.0078	Beta-Ocimene
11	15.168	1527274	3.1991	Cymenepara
12	15.632	78527	0.1645	Terpinolene
13	16.211	3290	0.0069	Octanal <n->
14	18.113	2512	0.0053	5-Hepten-2-one,6-methyl
15	23.365	29276	0.0613	trans-.beta-Terpineol
16	25.117	11185	0.0234	Camphor
17	26.758	7810	0.0164	Linalool
18	28.840	69837	0.1463	Terpinen-4-ol
19	32.586	7177	0.0150	Terpineol alpha
Total		47741030	100.0000	