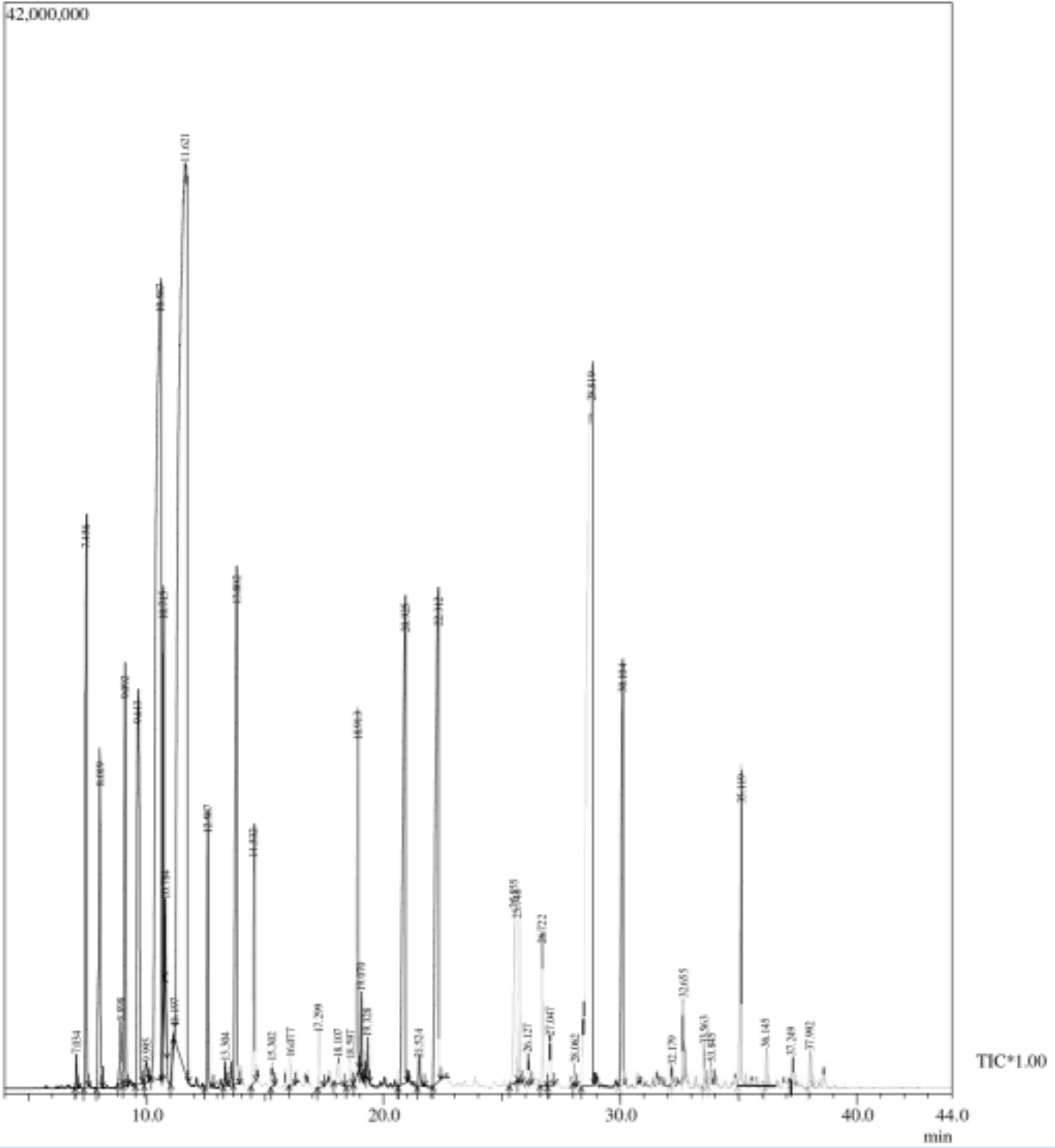




GCMS Analysis

Product Name	Lemon Essential Oil
Botanical Name	Citrus limonum
Country of Origin	India
Storing Precautions	Store in cool, dry place in tightly sealed containers
Shelf Life	3 year(s) or longer if stored properly
Date of Testing	03/28/2022



Peak Report TIC

Peak#	Ret.Time	Area	Area%	Name
1	7.034	3920894	0.13	Tricyclene
2	7.456	90400193	2.94	Alpha-pinene
3	8.019	58544458	1.90	Camphene
4	8.898	12656399	0.41	Sabinene
5	9.092	73884897	2.40	Pinenebeta
6	9.643	111729124	3.63	Myrcene
7	9.995	4895205	0.16	Terpinolene
8	10.587	441023050	14.32	Carene delta-3
9	10.715	56227940	1.83	Cineole 1,4
10	10.784	10867536	0.35	Terpinene alpha
11	11.197	3012971	0.10	Para-cymene
12	11.621	832648715	27.04	Limonene
13	12.587	34713746	1.13	Terpinene gamma
14	13.304	3151176	0.10	1-Octanol
15	13.802	107878287	3.50	Alpha-terpinolene
16	14.532	38438104	1.25	Linalool
17	15.302	3098947	0.10	Fenchyl alcohol
18	16.077	5604360	0.18	1-terpineol
19	17.299	9883590	0.32	Isoborneol
20	18.107	7625628	0.25	Cis-Sabinene hydrate
21	18.597	5060190	0.16	m-Cymen-8-ol
22	18.913	75162262	2.44	alpha-Terpineol
23	19.070	9710473	0.32	Terpineol gamma
24	19.328	4857342	0.16	Decanal

25	20.925	147889721	4.80	Neral
26	21.524	6312758	0.21	Geraniol
27	22.312	170338264	5.53	Geranial
28	25.555	36421981	1.18	Alpha-terpinylacetate
29	25.748	22938460	0.74	Citronellylacetate
30	26.127	4760886	0.15	Nerylacetate
31	26.722	22370217	0.73	Copaenealpha
32	27.047	9779032	0.32	Geranylacetate
33	28.062	3479372	0.11	Longifolene
34	28.819	464035739	15.07	Trans-Caryophyllene
35	30.104	86870886	2.82	Alpha-caryophyllene
36	32.179	2638124	0.09	Farnesene(E,E)-alpha
37	32.655	10529699	0.34	Cadinenedelta
38	33.563	5451077	0.18	trans-alpha-Bisabolene
39	33.845	5350852	0.17	Longifolol
40	35.119	58597004	1.90	Caryophylleneoxide
41	36.145	5875701	0.19	Humuleneoxidell
42	37.249	4468463	0.15	Caryophylla-4(12),8(13)-dien-5b-ol
43	37.992	5978236	0.19	Beta-costol
Total		3079081959	100.00	

Disclaimer & Caution

This information is provided for documentation purposes only. Please note that this report is meant to represent the general quality of essential oil and is not lot specific due to high volume turnover. Specific lots may vary slightly due to the inherent naturalness of the product.

Prior to use, please refer to all relevant technical information to the product. The complete range of conditions or methods of use are beyond our control therefore we do not assume any responsibility and expressly disclaim any liability for any use of this product. Information contained herein is believed to be true and accurate however, all statements or suggestions are made without warranty, expressed or implied, regarding accuracy of the information, the hazards connected with the use of the material or the results to be obtained from the use thereof. Compliance with all applicable federal, state, and local laws and local regulations remains the responsibility of the user. The liability of VINEVIDA is limited to the value of the goods and does not include any consequential loss. VINEVIDA will not be held liable for any errors or delays in the content, or for any actions taken in reliance thereon. VINEVIDA releases itself from all liabilities, and shall not be held responsible for any damages resulting from use or reliance upon this information.