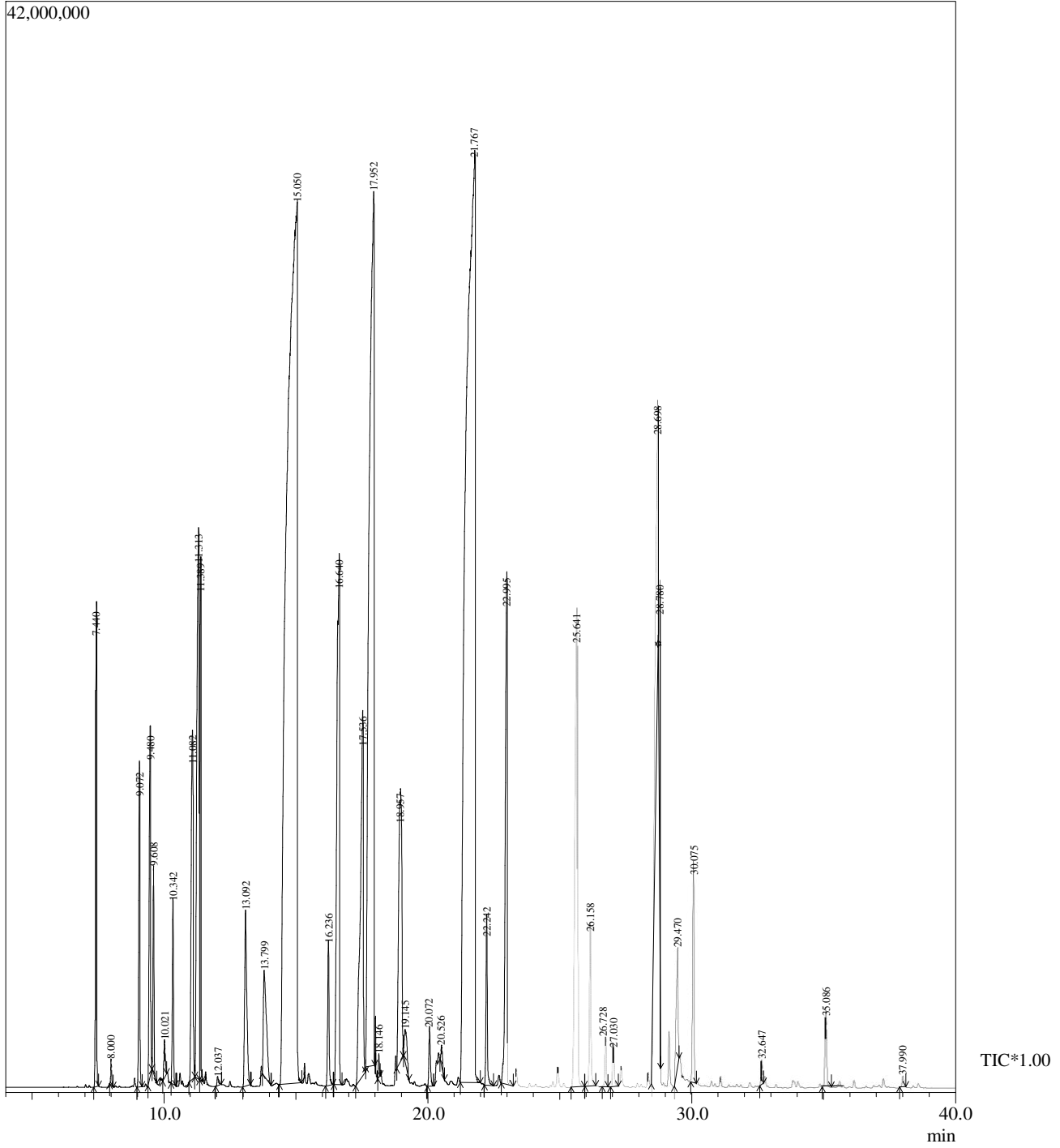


Sample Information

Analyzed by AI : \$Admn.\$  
Name : Lavender oil  
Method File : D:\GCMS\GCMS METHOD\Essential oil\Essentialoil.qm



Peak#	R.Time	Area	Area%	Peak ReportTIC Name
1	7.440	60778218	1.69	Alpha-pinene
2	8.000	2644127	0.07	Camphene
3	9.072	39940638	1.11	Pinenebeta
4	9.480	51473625	1.43	3-Octanone
5	9.608	21633466	0.60	Myrcene
6	10.021	5783256	0.16	Hexanol ethyl
7	10.342	21612856	0.60	Delta-3-carene
8	11.082	69935417	1.95	Cymenepara
9	11.313	132945426	3.70	Limonene
10	11.389	56990315	1.59	Eucalyptol
11	12.037	1341035	0.04	Ocimene(E)-beta
12	13.092	38802765	1.08	Linalool oxidecis
13	13.799	32569043	0.91	Linalool oxidetrans
14	15.050	919190290	25.57	Linalool
15	16.236	20674223	0.58	Dihydrolinalool
16	16.640	142486865	3.96	Camphor
17	17.536	110875531	3.08	Isoborneol
18	17.952	416728841	11.59	Isononylacetate
19	18.146	2238841	0.06	Menthol
20	18.957	87410211	2.43	Alpha-terpineol
21	19.145	8855809	0.25	Terpineolgamma
22	20.072	9287055	0.26	4-Methylhexylacetate
23	20.526	3382584	0.09	Nerol
24	21.767	843327894	23.46	Linalylacetate
25	22.242	23144620	0.64	Dihydrolinalool acetate
26	22.995	102763957	2.86	Alpha-fenchylacetate
27	25.641	125974681	3.50	Alpha-terpinylacetate
28	26.158	24830239	0.69	Nerylacetate
29	26.728	6922300	0.19	Copaenealpha
30	27.030	7112828	0.20	Geranyl acetate
31	28.698	96599988	2.69	Transcaryophyllene
32	28.780	31939624	0.89	Jasmacyclene
33	29.470	23885685	0.66	trans-o-Coumaricacid
34	30.075	32581644	0.91	Alpha-caryophyllene
35	32.647	3358588	0.09	Cadinenedelta
36	35.086	13129367	0.37	Caryophylleneoxide
37	37.990	1988445	0.06	Beta-costol
		3595140297	100.00	