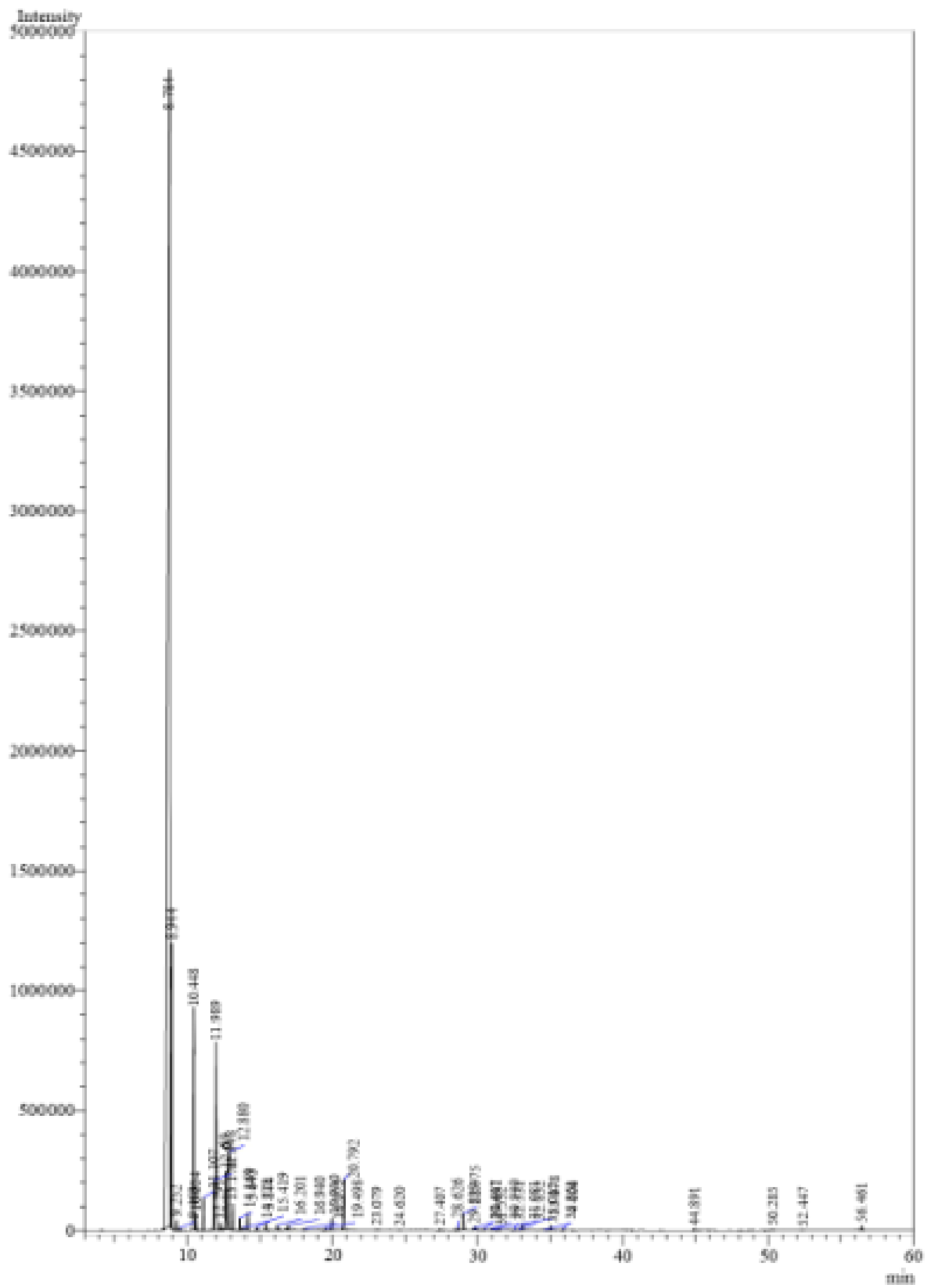




## GCMS Analysis

<b>Product Name</b>	Frankincense Essential Oil
<b>Botanical Name</b>	Boswellia serrata
<b>Country of Origin</b>	India
<b>Storing Precautions</b>	Store in cool, dry place in tightly sealed containers
<b>Shelf Life</b>	3 year(s) or longer if stored properly
<b>Date of Testing</b>	03/28/2022



## Peak Report TIC

Peak#	Ret.Time	Area	Area%	Name
1	8.784	51338431	71.9185	Alpha-thujene
2	8.944	3725200	5.2185	Alpha-pinene
3	9.252	136129	0.1907	Thuja-2,4(10)-diene
4	9.469	35707	0.0500	Camphene
5	10.448	4114395	5.7637	Sabinene
6	10.604	205352	0.2877	Pinenebeta
7	11.107	494331	0.6925	Myrcene
8	11.848	943332	1.3215	Beta-phellendrene
9	11.989	3656183	5.1218	Delta-3-carene
10	12.291	115791	0.1622	Terpinenealpha
11	12.669	972238	1.3620	Cymenepara
12	12.880	1636736	2.2929	Limonene
13	13.174	420295	0.5888	Trans betaocimene
14	13.643	201687	0.2825	Cis betaocimene
15	13.844	46394	0.0650	Thujol
16	14.169	302555	0.4238	Terpinenegamma
17	14.778	56002	0.0785	cis-beta-Terpineol
18	15.419	146130	0.2047	Terpinolene
19	16.201	105243	0.1474	linalool
20	16.940	121116	0.1697	Thujonebeta
21	18.073	42008	0.0588	Sabinol trans
22	19.498	59820	0.0838	Sabinol cis
23	19.930	235098	0.3293	Terpinen-4-ol
24	20.792	985950	1.3812	Estragole

25	23.079	31080	0.0435	Linalylacetate
26	24.620	12798	0.0179	Bornyl acetate
27	27.407	29611	0.0415	Terpinylacetatealpha
28	28.626	61888	0.0867	Copaenealpha
29	28.975	323124	0.4527	Bourbonenebeta
30	29.691	33704	0.0472	Aromadendrene
31	29.829	53993	0.0756	Isoeugenol methyl
32	30.447	43623	0.0611	beta-ylangene
33	30.930	33267	0.0466	beta-copaene
34	31.081	20424	0.0286	Bergamotenealpha-cis
35	31.532	27463	0.0385	Isogermacrene D
36	32.531	16898	0.0237	Germacrene D
37	32.832	21597	0.0303	Muurolenegamma
38	33.078	250255	0.3506	Gamma-muurolene
39	34.606	19297	0.0270	Cadinenedelta
40	35.012	100757	0.1411	Kessane
41	35.861	28271	0.0396	Elemicin
42	44.891	32002	0.0448	Alpha-Phellandrenedimer
43	50.285	23998	0.0336	CembreneA
44	52.447	8770	0.0123	11-Hexadecenal
45	56.461	115233	0.1614	Oxirane,2,2-dimethyl-3-(3,7,12,16,20-pentamethyl-3
Total		17384176	100.0000	

## **Disclaimer & Caution**

This information is provided for documentation purposes only. Please note that this report is meant to represent the general quality of essential oil and is not lot specific due to high volume turnover. Specific lots may vary slightly due to the inherent naturalness of the product.

Prior to use, please refer to all relevant technical information to the product. The complete range of conditions or methods of use are beyond our control therefore we do not assume any responsibility and expressly disclaim any liability for any use of this product. Information contained herein is believed to be true and accurate however, all statements or suggestions are made without warranty, expressed or implied, regarding accuracy of the information, the hazards connected with the use of the material or the results to be obtained from the use thereof. Compliance with all applicable federal, state, and local laws and local regulations remains the responsibility of the user. The liability of VINEVIDA is limited to the value of the goods and does not include any consequential loss. VINEVIDA will not be held liable for any errors or delays in the content, or for any actions taken in reliance thereon. VINEVIDA releases itself from all liabilities, and shall not be held responsible for any damages resulting from use or reliance upon this information.