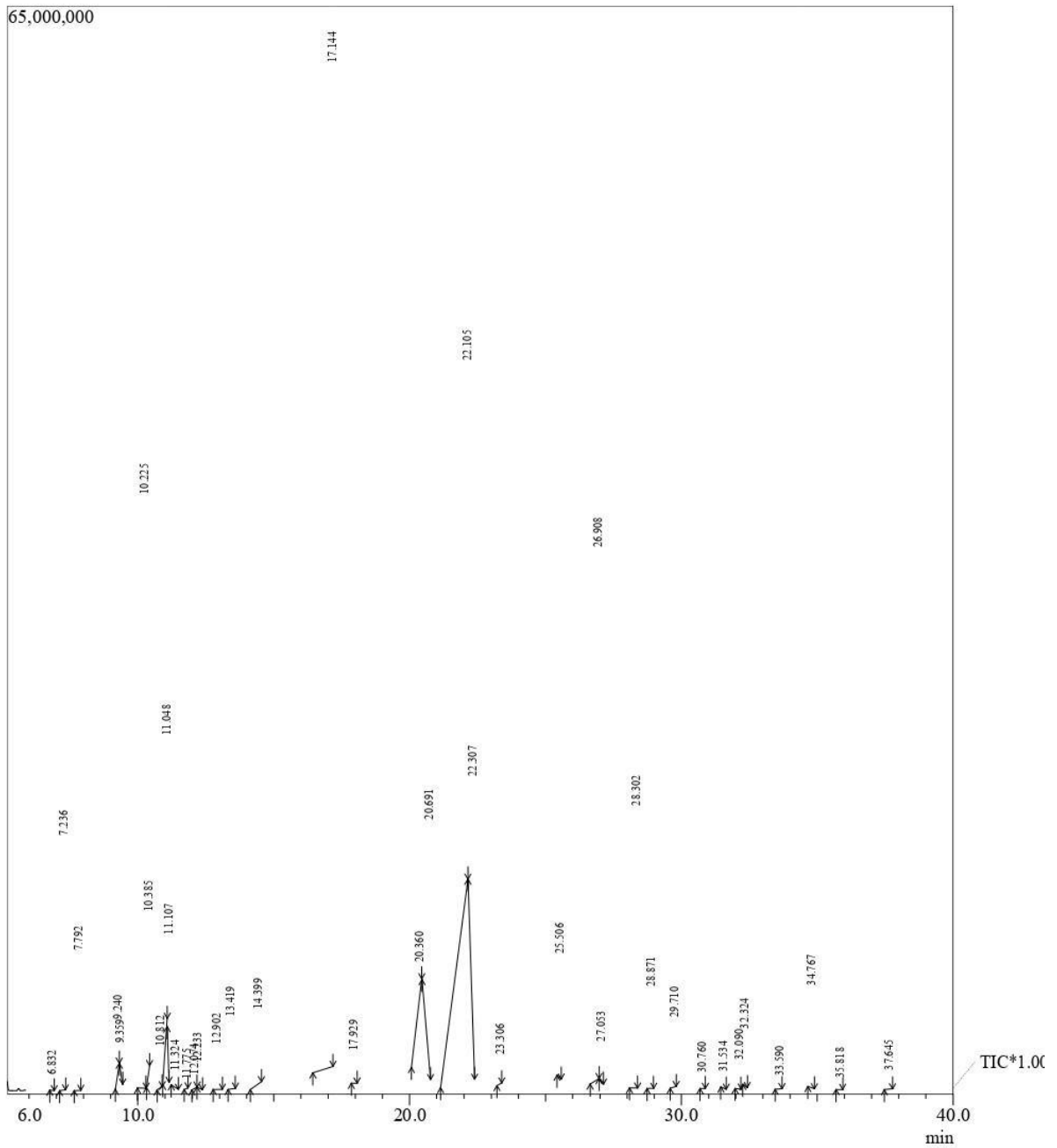




GCMS Analysis

Product Name	Citronella Java Essential Oil
Botanical Name	Cymbopogon winterianus
Country of Origin	Java
Storing Precautions	Store in cool, dry place in tightly sealed containers
Shelf Life	3 year(s) or longer if stored properly
Date of Testing	03/28/2022



Peak Report TIC

Peak#	R.Time	Area	Area%	Name
1	6.832	3254308	0.08	Tricyclene
2	7.236	67543720	1.58	Pinenealpha
3	7.792	35706178	0.83	Camphene
4	9.240	15732094	0.37	5-Hepten-2-one,6-methyl
5	9.359	5725992	0.13	Myrcene
6	10.225	279247833	6.52	Carene delta-3
7	10.385	27987172	0.65	Cineole1,4
8	10.812	11325274	0.26	Cymenepara
9	11.048	102941019	2.40	Limonene
10	11.107	12203320	0.29	Eucalyptol
11	11.324	4233931	0.10	Alpha-Terpineol
12	11.775	2004368	0.05	beta-Ocimene
13	12.074	4043841	0.09	Bergamal
14	12.233	5281846	0.12	Terpinen gamma
15	12.902	16262264	0.38	4-Nonanone
16	13.419	17653585	0.41	Terpinolene
17	14.399	58327872	1.36	Linalool
18	17.144	1496480523	34.96	Citronellal
19	17.929	9169003	0.21	Isogeranial
20	20.360	29864214	0.70	Nerol
21	20.691	147147326	3.44	Neral
22	22.105	1248006216	29.15	Geraniol
23	22.307	104476402	2.44	Geranial
24	23.306	6939882	0.16	Geranylformate

25	25.506	30152521	0.70	Citronellylacetate
26	26.908	314069293	7.34	Nerylacetate
27 28	27.053 28.302	9938646 112667286	0.23 2.63	Beta-elemene Caryophyllene(E)
29	28.871	22937262	0.54	Bergamotenealpha-cis
30	29.710	17359707	0.41	Humulenealpha
31	30.760	3606971	0.08	GermacreneD
32	31.534	3467853	0.08	Muurolenealpha
33	32.090	6631364	0.15	Cadinenegamma
34	32.324	12031503	0.28	Cadinenedelta
35	33.590	3597367	0.08	Elemol
36	34.767	25083526	0.59	Caryophylleneoxide
37	35.818	2914797	0.07	Humuleneepoxide2
38	37.645	5069234	0.12	Alpha-Cadinol
Total		4281085513	100.00	

Disclaimer & Caution

This information is provided for documentation purposes only. Please note that this report is meant to represent the general quality of essential oil and is not lot specific due to high volume turnover. Specific lots may vary slightly due to the inherent naturalness of the product.

Prior to use, please refer to all relevant technical information to the product. The complete range of conditions or methods of use are beyond our control therefore we do not assume any responsibility and expressly disclaim any liability for any use of this product. Information contained herein is believed to be true and accurate however, all statements or suggestions are made without warranty, expressed or implied, regarding accuracy of the information, the hazards connected with the use of the material or the results to be obtained from the use thereof. Compliance with all applicable federal, state, and local laws and local regulations remains the responsibility of the user. The liability of VINEVIDA is limited to the value of the goods and does not include any consequential loss. VINEVIDA will not be held liable for any errors or delays in the content, or for any actions taken in reliance thereon. VINEVIDA releases itself from all liabilities, and shall not be held responsible for any damages resulting from use or reliance upon this information.