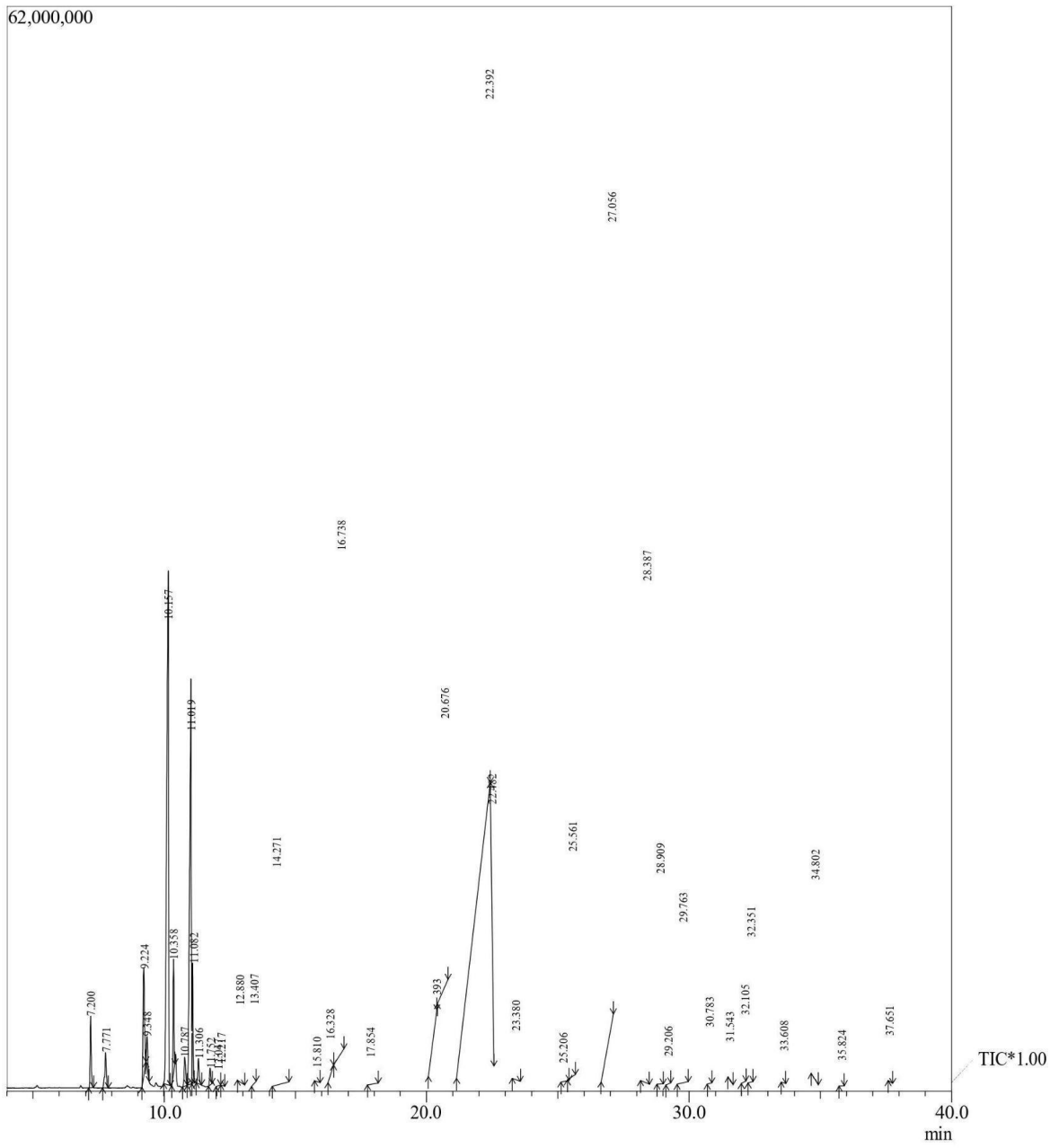




GCMS Analysis

Product Name	Citronella Ceylon Essential Oil
Botanical Name	Cymbopogon Nardus
Country of Origin	Ceylon
Storing Precautions	Store in cool, dry place in tightly sealed containers
Shelf Life	3 year(s) or longer if stored properly
Date of Testing	03/28/2022



Peak Report TIC

Peak#	R.Time	Area	Area%	Name
1	7.200	12873926	0.31	Alpha-pinene
2	7.771	8465272	0.20	Camphene
3	9.224	25485845	0.61	Hept-5-en-2-one6-methyl
4	9.348	5779937	0.14	Myrcene
5	10.157	148139876	3.56	Delta3carene
6	10.358	19383243	0.47	Cineole1,4
7	10.787	7125385	0.17	Cymenepara
8	11.019	99855440	2.40	Limonene
9	11.082	17084070	0.41	Eucalyptol
10	11.306	5496892	0.13	Transbetaocimene
11	11.752	3275466	0.08	Cisbetaocimene
12	12.047	3784331	0.09	Bergamal
13	12.217	4268420	0.10	Gamma-terpinene
14	12.880	19732823	0.47	4-Nonanone
15	13.407	14766651	0.35	Terpinolene
16	14.271	125861772	3.02	Linalool
17	15.810	4254569	0.10	SalveneE
18	16.328	13541882	0.33	Myrtanolcis
19	16.738	300598638	7.22	Citronellal
20	17.854	12052753	0.29	Isogeranial
21	20.393	13634266	0.33	Citronellol
22	20.676	186675403	4.48	Neral
23	22.392	1842752462	44.23	Geraniol
24	22.482	41939224	1.01	Geranial

25	23.380	17210393	0.41	Geranylformate
26	25.206	6934560	0.17	alpha-Bisabolol
27 28	25.561 27.056	86360153 624168270	2.07 14.98	Citronellylacetate Nerylacetate
29	28.387	246685848	5.92	Caryophyllene(E)
30	28.909	51521052	1.24	Bergamotenealpha-,cis
31	29.206	6590798	0.16	Sesquiphellandrenebeta
32	29.763	47639734	1.14	Humulenealpha
33	30.783	12231541	0.29	GermacreneD
34	31.543	6955488	0.17	Muurolenealpha
35	32.105	14790152	0.36	Cadinenegamma
36	32.351	32399057	0.78	Cadinenedelta
37	33.608	7922609	0.19	Hedycaryol
38	34.802	51526938	1.24	Caryophylleneoxide
39	35.824	5923999	0.14	Humuleneoxidell
40	37.651	10229953	0.25	Alpha-Cadinol
Total		4165919091	100.00	

Disclaimer & Caution

This information is provided for documentation purposes only. Please note that this report is meant to represent the general quality of essential oil and is not lot specific due to high volume turnover. Specific lots may vary slightly due to the inherent naturalness of the product.

Prior to use, please refer to all relevant technical information to the product. The complete range of conditions or methods of use are beyond our control therefore we do not assume any responsibility and expressly disclaim any liability for any use of this product. Information contained herein is believed to be true and accurate however, all statements or suggestions are made without warranty, expressed or implied, regarding accuracy of the information, the hazards connected with the use of the material or the results to be obtained from the use thereof. Compliance with all applicable federal, state, and local laws and local regulations remains the responsibility of the user. The liability of VINEVIDA is limited to the value of the goods and does not include any consequential loss. VINEVIDA will not be held liable for any errors or delays in the content, or for any actions taken in reliance thereon. VINEVIDA releases itself from all liabilities, and shall not be held responsible for any damages resulting from use or reliance upon this information.