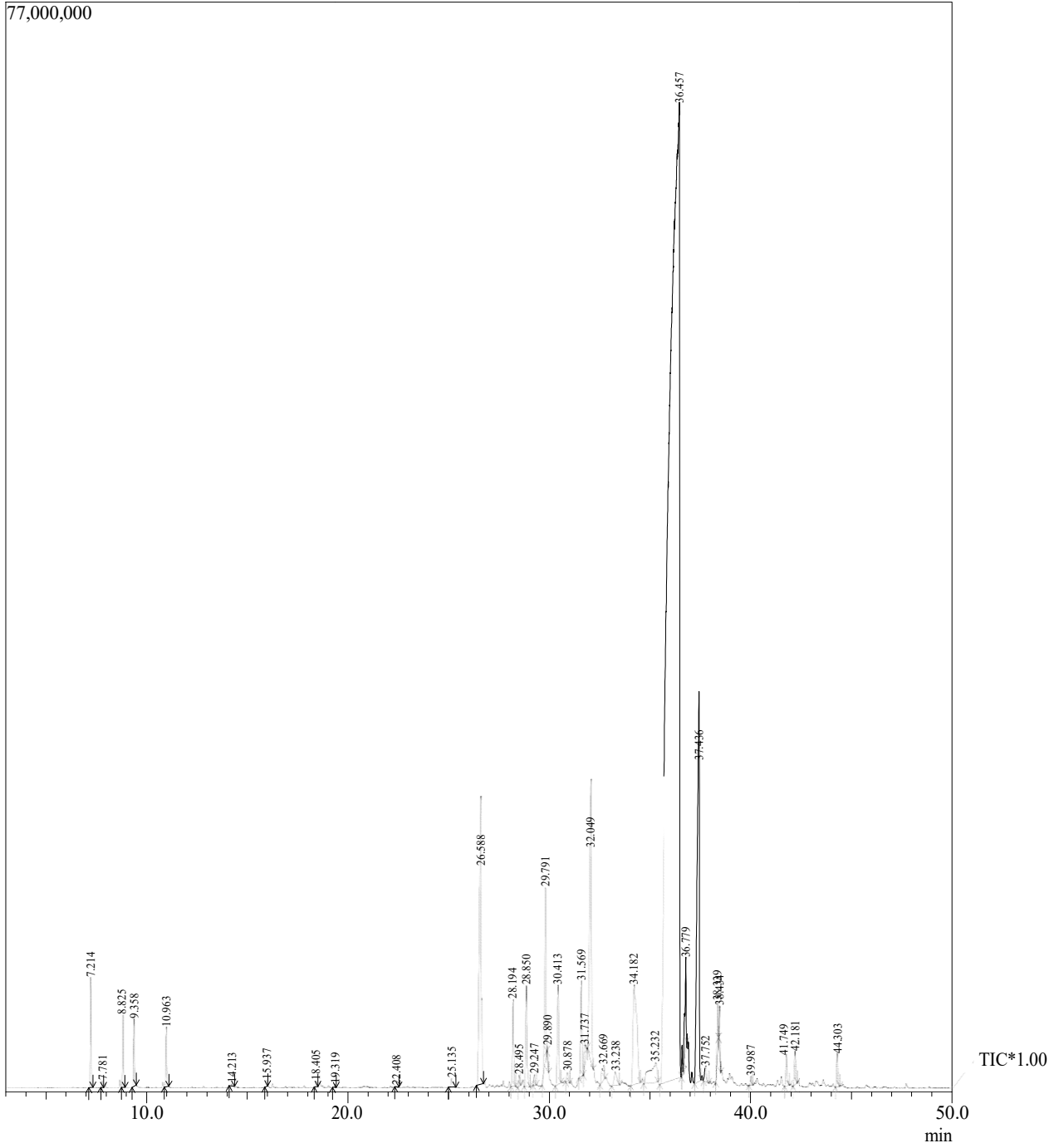


SampleName CarrotSeedoil



PeakReportTIC

Peak#	R.Time	Area	Area%	Name
1	7.214	25080817	0.71	Alpha-pinene
2	7.781	1722188	0.05	Camphene
3	8.825	17054247	0.48	Pinenebeta
4	9.358	16412651	0.46	Myrcene
5	10.963	15674349	0.44	Limonene
6	14.213	499443	0.01	linalool
7	15.937	1927540	0.05	Trans-pinocarveol
8	18.405	1828921	0.05	Myrtenal
9	19.319	1086830	0.03	Adoxal
10	22.408	444046	0.01	Bornylacetate
11	25.135	4723762	0.13	Arbozolexo
12	26.588	138455298	3.92	Daucene
13	28.194	27209138	0.77	Trans-Caryophyllene
14	28.495	3036457	0.09	Neocallitropsenealpha
15	28.850	34286655	0.97	Bergamotenealpha-cis
16	29.247	3039352	0.09	Acora-2,4(15)-diene
17	29.791	59693371	1.69	Farnesene(E)-beta
18	29.890	2358800	0.07	GermacreneD
19	30.413	37291518	1.06	Beta-copaene
20	30.878	4476737	0.13	Curcumenealpha
21	31.569	31581937	0.89	Carota-4(5),11(12)-diene
22	31.737	9608901	0.27	Linalool(Z)-8-hydroxy
23	32.049	130825461	3.70	Beta-Bisabolene
24	32.669	9569864	0.27	gamma-Elemene
25	33.238	10168238	0.29	Thujopsan-2-alpha-ol
26	34.182	94174366	2.66	Muurola-4,10(14)-dien-1-beta-ol
27	35.232	36399456	1.03	Caryophyllene14-hydroxy-4,5-dihydro
28	36.457	2519547097	71.30	Carotol
29	36.593	4718324	0.13	Transbetaeemenone
30	36.779	25666325	0.73	Amorpha-4,9-dien-2-ol
31	37.436	204674363	5.79	Daucol
32	37.752	5745852	0.16	Larixol
33	38.339	13219675	0.37	Beta-eudesmol
34	38.434	9531987	0.27	Cedrane
35	39.987	2681565	0.08	Muurola-4,10(14)-dien-1-beta-ol
36	41.749	9798745	0.28	Dihydrojasmone
37	42.181	10319850	0.29	Sesquicineole
38	44.303	9229085	0.26	Phytone
		3533763211	100.00	