

# SELECT CLOSE COUPLED

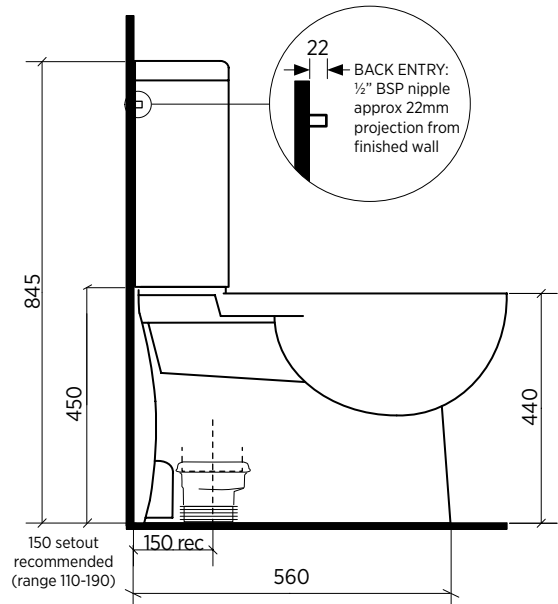
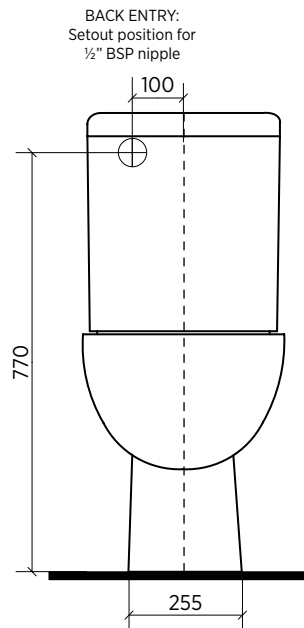
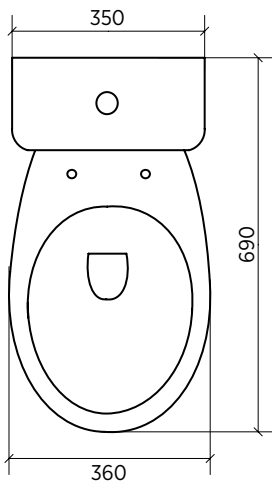
## CERAMIC TOILET SUITE






### Ceramic close coupled toilet suite Clean Flush, Nanoglaze, Easy Care Height

- Clean Flush rimless pan design for an efficient, powerful flush
- Easy care height, pan height 440 mm
- White vitreous china with nanoglaze surface, easy to clean
- Soft closing seat
- S trap
- Bottom entry or back entry plumbing
- WELS 4 star 4.5/3L water saving flush

ORDER CODE	191786 Select CC, bottom entry	Old code: STO-401-00
	191787 Select CC, back entry	Old code: STO-401-01
CISTERN	Left and right bottom entry inlet points. Back entry plumbing option.	
PAN	Close coupled with rimless pan design.	
TRAPS	Suitable for S trap installations.	
SEAT	Soft closing seat.	
WELS	4 star rating 4.5/3 litre water saving flush.	
SETOUT	Variable 130-170mm using supplied connector; 150mm recommended. Note that 110-190 can be achieved with 20mm offset collar, not supplied.	
FIXING	This is a close coupled toilet suite – the cistern is fixed directly to the pan and does not require wall fixing. Pan may be bedded with cement base or using silicone sealant.	



 Rimless Clean Flush pan - for an efficient, powerful flush.  Nanoglaze surface - ultra-smooth, anti-bacterial, easy to clean.  Easy care height - making it easier to get on and off the seat.

# SEIMA

bathroom | kitchen | laundry

seima.com.au

#### Please note

- Installation shall be in accordance with AS/NZS3500.
- All measurements are in millimetres. Height dimensions are to base of pan. Make allowance for bedding.
- Bedding: Pan may be bedded with cement base or using silicone sealant. Fix pan to floor using a sand cement mixture of 3:1 to a depth of 60mm. Do not use lime or fast-drying cement.
- Bracket fixing: The pan should be bedded with silicone sealant and fixed with the brackets supplied. Do NOT use epoxy type adhesives.
- Dimensions are nominal and subject to normal ceramic manufacturing variations.
- Specifications may vary without notice as part of our continuous improvement practices.
- Clean with a damp cloth. Do not use abrasive cleaners, liquids or pastes.

select-cc-ds | v 2.1