

Sink accessories

For stainless steel sinks



SEIMA

bathroom | kitchen | laundry

seima.com.au

Please note

- All measurements are in millimetres.
- Always use the actual product to verify cutout.
- Specifications may vary without notice as part of our continuous improvement practices.

sink-accessory-ds | v 1.0 | page 1

Tetra + Kubic

Accessories for Tetra and Kubic sinks

CUTTING BOARD 02

Suits Tetra, Kubic, Kubic Abovement, Kubic Deep

ORDER CODE 191548 (old code: SKA-001-02)
SIZE 375W x 440 mm
MATERIAL Bamboo
FIT Fits standard size bowl (does not fit half-bowl)

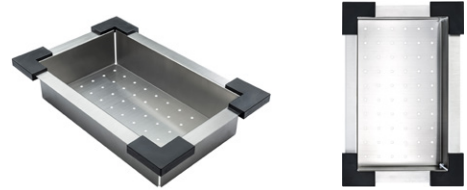


COLANDER

Suits Tetra, Kubic, Kubic Abovement, Kubic Deep

ORDER CODE 191564 (old code: SKA-016)
SIZE 290 x 450 x 75H mm
MATERIAL Stainless steel, plastic
FIT Fits standard size bowl (does not fit half-bowl)

The colander is especially useful for rinsing leaves and vegetables and draining pasta.



DRAINER TRAY

Suits Tetra, Kubic, Kubic Deep (not suitable for Kubic Abovement)

ORDER CODE 191565 (old code: SKA-017)
SIZE 380 x 435 x 20H mm
MATERIAL Stainless steel
FIT Fits standard size bowl (except Kubic Abovement)

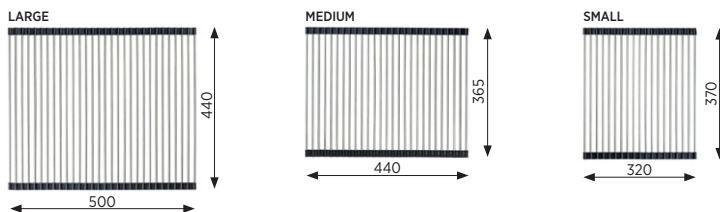
This stainless steel drainer tray can be placed over the bowl to create a level surface that is useful for many purposes.



ROLL-OUT MATS

Suitable for all sinks

ORDER CODE Large 191561 (old code: SKA-015-01)
Medium 191562 (old code: SKA-015-02)
Small 191563 (old code: SKA-015-03)
MATERIAL Stainless steel, rubber



BENCHTOP DRAINER TRAY

Suits Tetra, Kubic, Kubic Deep (not suitable for Kubic Abovement)

ORDER CODE 191566 (old code: SKA-018)
SIZE 440 x 364 x 30H mm
MATERIAL Stainless steel, plastic

The benchtop drainer tray is designed to sit on the benchtop alongside your sink, for draining dishes or defrosting food. The tray has a gentle slope so that liquid drains into the sink. The small size roll-out mat fits the tray. The benchtop drainer tray also fits neatly into the Tetra standard bowl.



DRAINER BASKET

Suitable for all sinks

ORDER CODE 191560 (old code: SKA-014)
SIZE 370 x 320 x 150H mm
MATERIAL Chrome plated metal



SEIMA

bathroom | kitchen | laundry

seima.com.au

Please note

- All measurements are in millimetres.
- Always use the actual product to verify cutout.
- Specifications may vary without notice as part of our continuous improvement practices.

Acero

Accessories for selected Acero sinks

CUTTING BOARD 01

Suits Acero 800, 980, 1080 and 1200 sinks

ORDER CODE 191547 (old code: SKA-001-01)
SIZE 330W x 410 mm
MATERIAL Bamboo
FIT Fits standard size bowl



CUTTING BOARD 03

Suits Acero 002 and 005 sinks

ORDER CODE 191549 (old code: SKA-001-03)
SIZE 360W x 425 mm
MATERIAL Bamboo
FIT Fits standard size bowl



CUTTING BOARD 04

Suits Acero 003 round sink

ORDER CODE 191550 (old code: SKA-001-04)
SIZE 350W x 390 mm
MATERIAL Wood
FIT Fits bowl of Acero 003 round sink



DRAINER BASKET

Suitable for all sinks

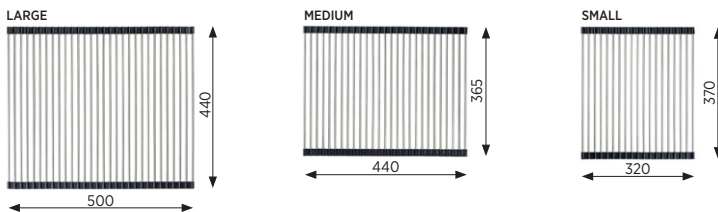
ORDER CODE 191560 (old code: SKA-014)
SIZE 370 x 320 x 150H mm
MATERIAL Chrome plated metal



ROLL-OUT MATS

Suitable for all sinks

ORDER CODE Large 191561 (old code: SKA-015-01)
Medium 191562 (old code: SKA-015-02)
Small 191563 (old code: SKA-015-03)
MATERIAL Stainless steel, rubber



SEIMA

bathroom | kitchen | laundry

seima.com.au

Please note

- All measurements are in millimetres.
- Always use the actual product to verify cutout.
- Specifications may vary without notice as part of our continuous improvement practices.

Wastes

Supplied with all sinks | Available as spare parts

BASKET WASTE — SQUARE

Suits Tetra sinks

Supplied with all Tetra sinks as standard.
Available as a spare part.

ORDER CODE 191588 (old code: SKA-012)
MATERIAL Stainless steel



BASKET WASTE — ROUND

Suits Kubic, Acero and Eva sinks

Wastes are supplied with all sinks as standard.
Available as a spare part.

ORDER CODE 191588 Round, long, no overflow (old code: SKA-004L)
191555 Round, short, no overflow (old code: SKA-004S)
191557 With round overflow connector (old code: SKA-010)
MATERIAL Stainless steel



SEIMA

bathroom | kitchen | laundry

seima.com.au

Please note

- All measurements are in millimetres.
- Always use the actual product to verify cutout.
- Specifications may vary without notice as part of our continuous improvement practices.