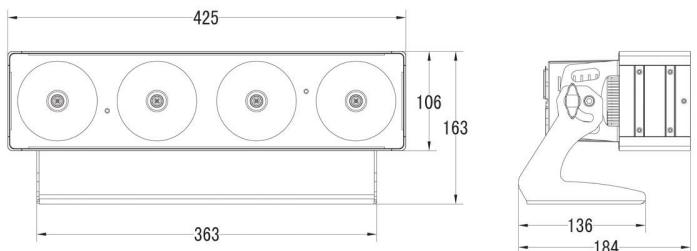
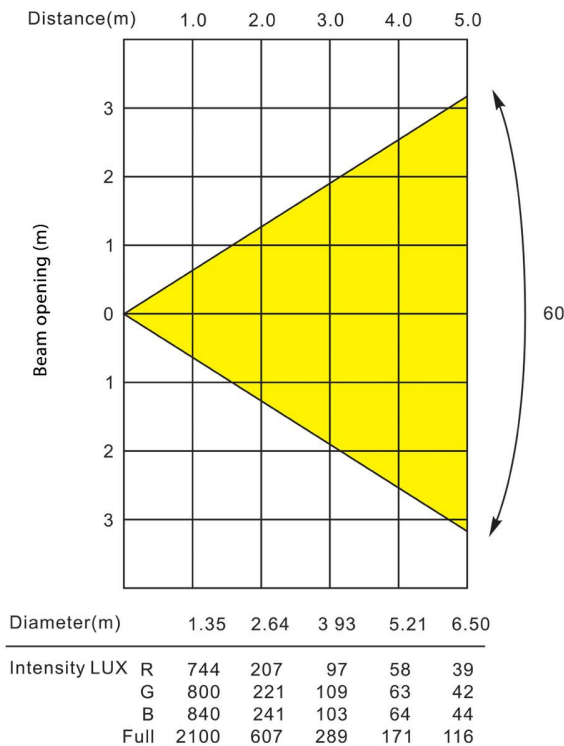


Need a wash or effect that can make an impact? Using 4x 30W RGB LEDs with individual pixel control and a 60 deg beam angle, this fixture is blindingly bright, looks great alone with its built in chasing patterns, and include multi panel chases when you link more than one unit together. It has the standard Event Lighting features not limited to LCD display, Fan less design, special bracket for floor or hanging mounting options, fixed colour and chasing standalone settings. Great for any application like washing a stage, backlighting or just as an effect unit! If you don't need the highest power in the range, the PAN4x1x15 has same function with 4x 15W RGB LEDs. Road cases are available.

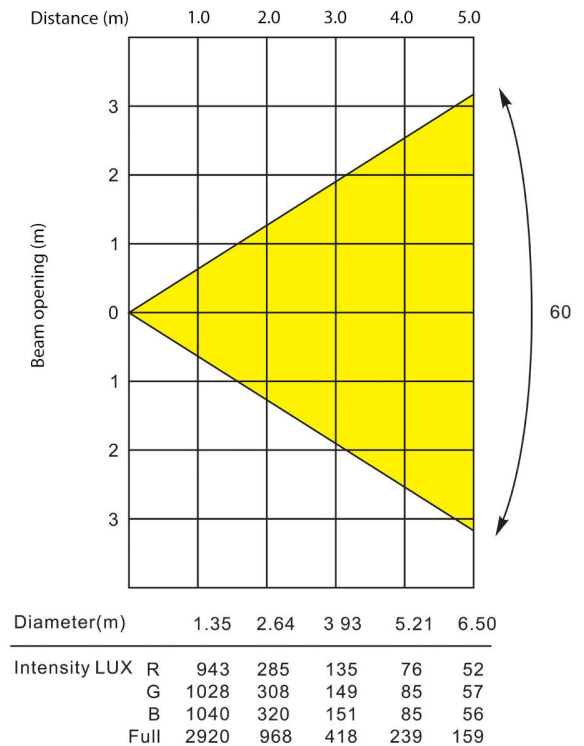
Dimensional Diagrams



Photometric Data PAN4x1x15



Photometric Data PAN4x1x30



Details (Ver 2.0)	PAN4X1X30	PAN4X1X15
Input Voltages	100V~240V AC, 50/60Hz	
Power Consumption	60W	120W
Light Source	4pcs 30W RGB COB LED	4pcs 15W RGB COB LED
Power Connection	IEC power input and output connection	
Lux on @2.0M RGB full on	968 lux	607 lux
Beam Angle	60°	
PWM	11,700 Hz	
Dimmer	0-100% dimmer	
Smooth electronic dimming with a 16-bit 4 Dimmer curve & one 8-bit Dimmer curve		
Strobe	1 - 30 Hz	
Control	DMX512, 3-pin XLR interfaces, 3/5/9/12/17 channel mode included Individual Pixel control	
Operation Mode	DMX, auto, sound active, master/ slave, manual colour mode, static colour mode,	
4-button LCD display control panel		
Oxidation surface treated Aluminum housing		
Smart Cooling system without fan		
Net weight	4kg	
Overall Size	425 x 187 x 163 mm	
Road case available		