

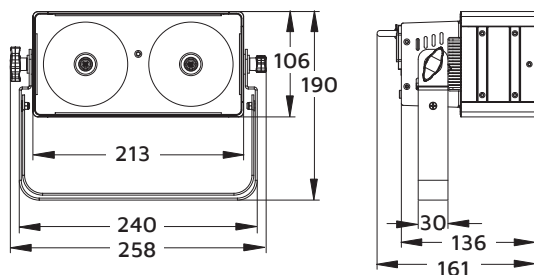


# PAN2X1X30

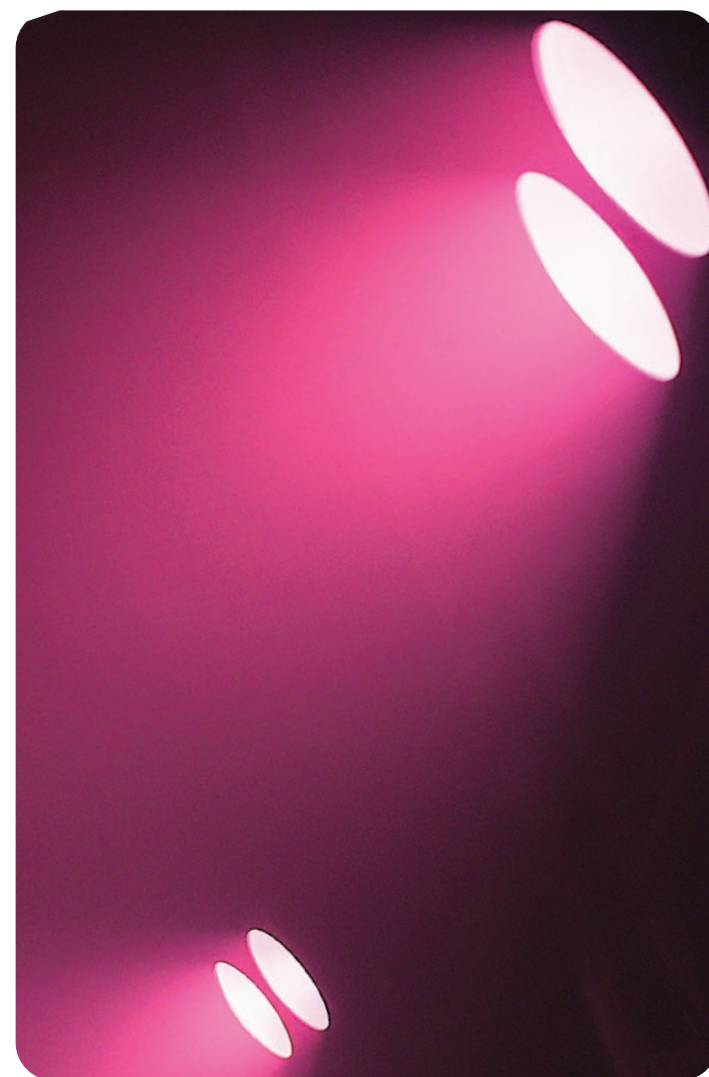
2x 30 W COB RGB PIXEL CONTROL PANEL

# PAN2X1X30W

2x 30 W COB RGB PIXEL CONTROL PANEL



<b>Photometric</b>	
Light Source	2x 30 W RGBW COB LEDs
Beam Angle	60°
Output	580 lux @ 2 m
PWM	11,700 Hz
LED Lifespan	50,000 hours
<b>Effects</b>	
Dimming	0~100%, 8-bit, 16-bit dimming curves
Strobe	1~30 Hz
<b>Power</b>	
Input Voltage	100~240 V AC, 50/60 Hz
Power Consumption	50 W
Connection	IEC in/out
<b>Control</b>	
Operation Modes	DMX, manual, auto, sound active, master/slave multi fixture chase
Control Protocol	DMX512
DMX Channels	3/5/6/9/11
Control Interface	3-pin XLR (optional: 5-pin XLR)
Display	4-button LCD control panel
<b>Housing</b>	
Housing Materials	Aluminium
Housing Finish	Matte black/white
Cooling	Fanless cooling
IP Rating	IP20
Net Weight	2.5 kg
<b>Accessories</b>	
Optional	Road Case: PAN4X1CASEWC



Lux @ 60°					
	1.0m	2.0m	3.0m	4.0m	5.0m
	Ø1.15	Ø2.31	Ø3.46	Ø4.62	Ø5.77
<b>R</b>	754	206	95	58	41
<b>G</b>	684	180	84	50	35
<b>B</b>	734	190	89	53	35
<b>Full</b>	2,377	580	261	155	104