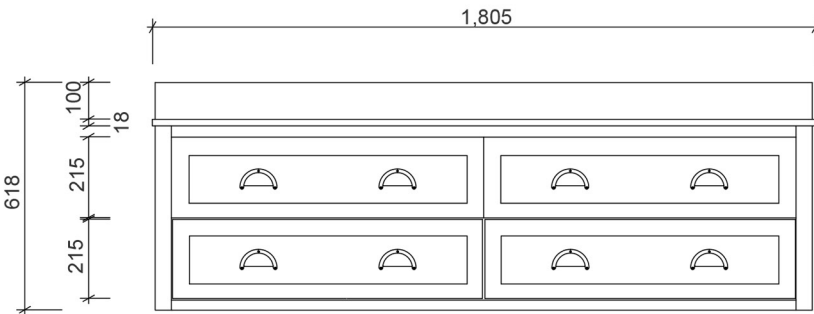
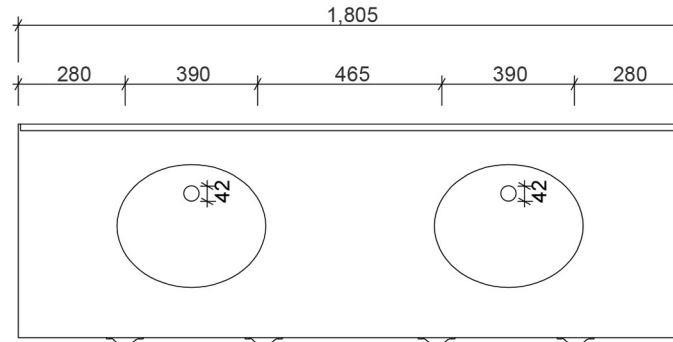


500  
100  
18

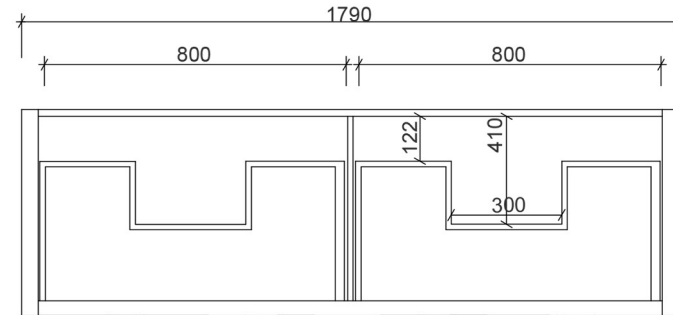


618  
100  
18  
215  
215



1,805  
280 390 465 390 280

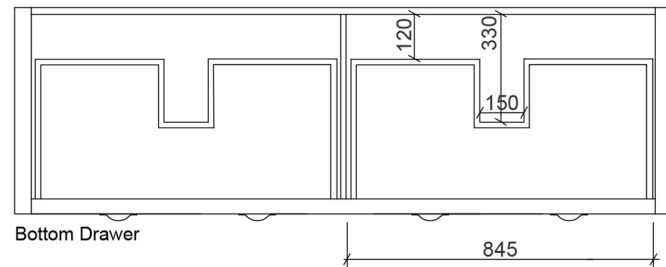
138  
315  
573  
120



1790  
800 800

560

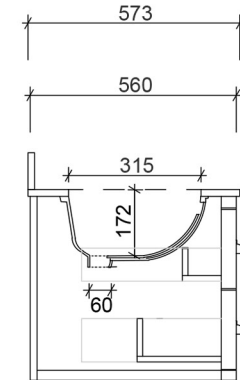
Top Drawer



Bottom Drawer

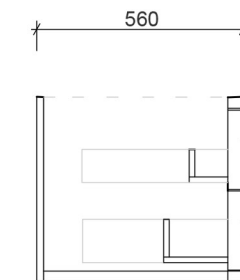
100

560



573  
560

100  
18  
500



560

100  
18  
500

Section - Cabinetry only



**Vanity By Design**

ABN: 99 121 837 143

**Brisbane Address:**

241 Monier Road, Darra QLD 4076

Bris PH: (07) 3376 6055

Email: [enquiries@vanitybydesign.com.au](mailto:enquiries@vanitybydesign.com.au)  
Website: <https://www.vanitybydesign.com.au/>

Name:	North Haven 1800 Double
Size :	1805 (W) mm x 573 (D) mm x 518 (H) mm
Type:	Wall Hung
Cabinet Material:	Solid Sustainable Plantation Timber
Basin Material:	Ceramic under-mount basins with overflow protection
Bench Top Finish:	Carrara white marble
Splashback:	Removable splashback (not full width splashback)
Taphole Options:	No taphole, 1 taphole or three tap holes
Vanity Colour Options:	Black, White, South Hampton Grey, Grey Garden, Navy

**Note:**

Mirrors, Wastes and Tapware not included.  
Plumbing fixtures must be installed by a qualified plumber  
Vanity must be installed by a qualified tradesperson.  
Failure to do so may void the warranty.  
Vanity By Design vanities include a 5 year warranty on cabinets and tapware.  
12 month warranty on tops, basins, mirrors, mirror shelves and mirror cabinets.

**Caution:**

Component may be heavy and require two people to lift.  
Do not stand or sit on vanity.