

# HOW TO FLY YOUR TEXAS FLAG AND MORE!

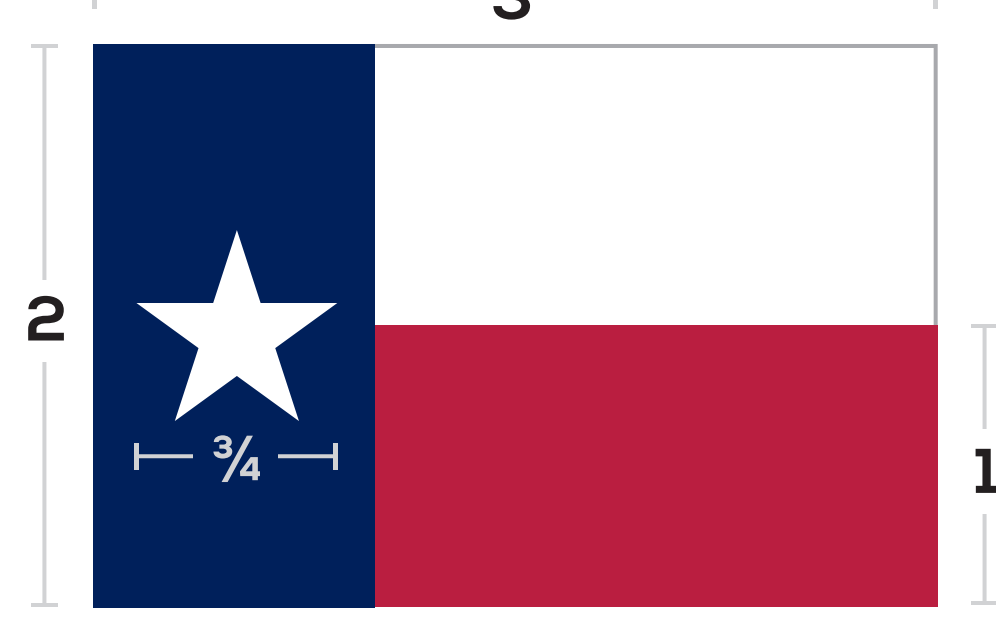
## A VISUAL GUIDE TO FLAG ETIQUETTE

DO YOU KNOW YOUR TEXAS FLAG? WELL, YOU WILL NOW! WE'VE COMBED THROUGH THE TEXAS FLAG CODE TO EXTRACT THE MOST ESSENTIAL INFORMATION, AND PAIRED IT WITH THE SIMPLE ILLUSTRATIONS BELOW. READ IT CAREFULLY, AND DISPLAY YOUR TEXAS FLAG WITH CONFIDENCE!

### FLAG ANATOMY

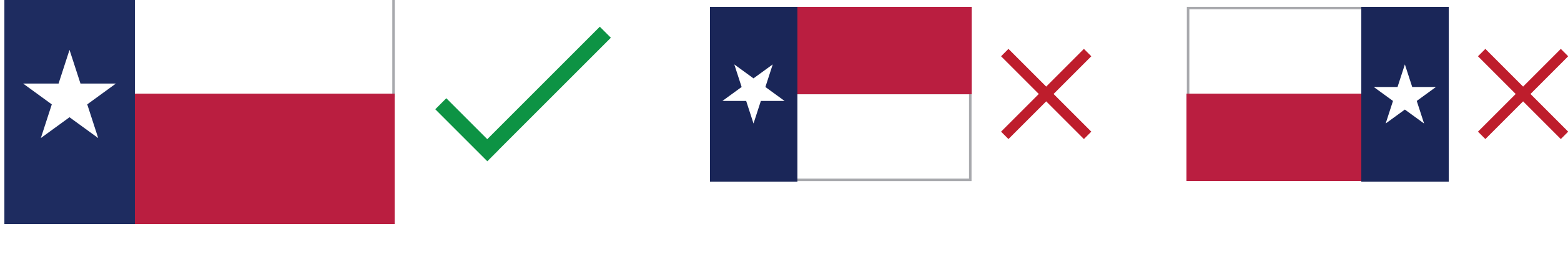
THE TEXAS FLAG CODE PROVIDES THE FOLLOWING SPECIFICATIONS OF A PROPERLY DESIGNED TEXAS FLAG:

"A WIDTH TO LENGTH RATIO OF 2:3 AND CONTAINS ONE BLUE VERTICAL STRIPE THAT HAS A WIDTH EQUAL TO ONE-THIRD OF THE LENGTH OF THE FLAG. IT HAS TWO EQUAL HORIZONTAL STRIPES, THE UPPER STRIPE WHITE, THE LOWER STRIPE RED, EACH HAVING A LENGTH EQUAL TO TWO-THIRDS THE LENGTH OF THE FLAG. THERE IS ONE REGULAR FIVE-POINTED STAR LOCATED IN THE CENTER OF THE BLUE STRIPE AND SIZED SO THAT THE DIAMETER OF A CIRCLE PASSING THROUGH THE FIVE POINTS OF THE STAR IS EQUAL TO THREE-FOURTHS THE WIDTH OF THE BLUE STRIPE. THE RED IS PANTONE 193C AND THE BLUE IS PANTONE 281C."



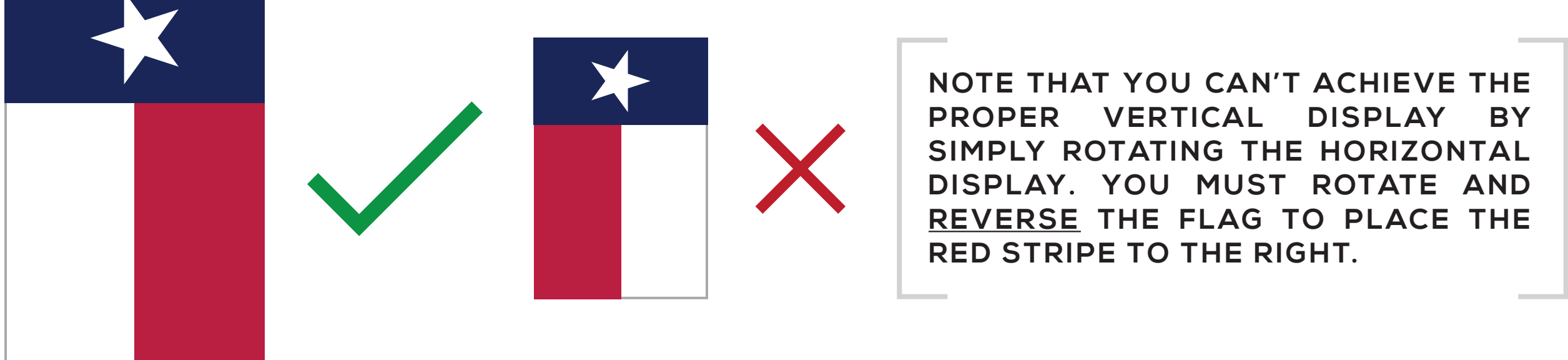
### DISPLAYING HORIZONTALLY

BLUE TO THE LEFT, THE WHITE TO THE TOP, THE RED TO THE BOTTOM. TEXANS WHO PUT THE RED ON THE TOP WILL BE DEPORTED TO NEW YORK.



### DISPLAYING VERTICALLY

MANY WELL-MEANING TEXANS GET THIS WRONG SO PAY ATTENTION! THE PROPER ORIENTATION IS: BLUE TO THE TOP, WHITE TO THE LEFT, AND RED TO THE RIGHT.



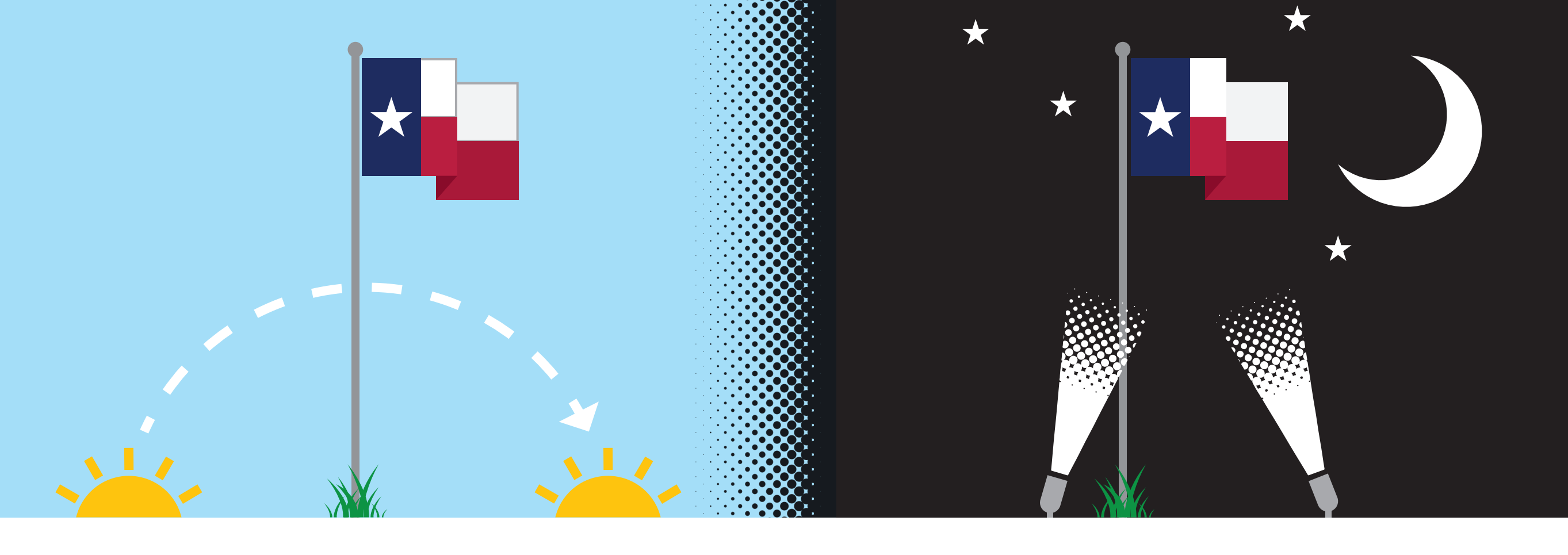
### RAISING & LOWERING

HOIST QUICKLY, AND LOWER SLOWLY AND CEREMONIOUSLY.



### FLYING OUTDOORS

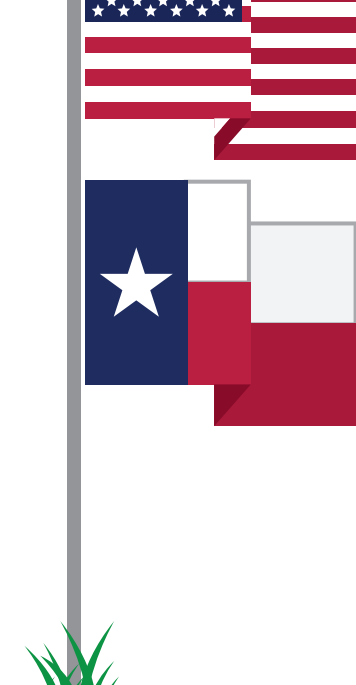
FLY ONLY FROM SUNRISE TO SUNSET. IF YOU FLY YOUR TEXAS FLAG PAST SUNSET, YOU MUST ILLUMINATE IT.



### FLYING WITH THE NATIONAL FLAG

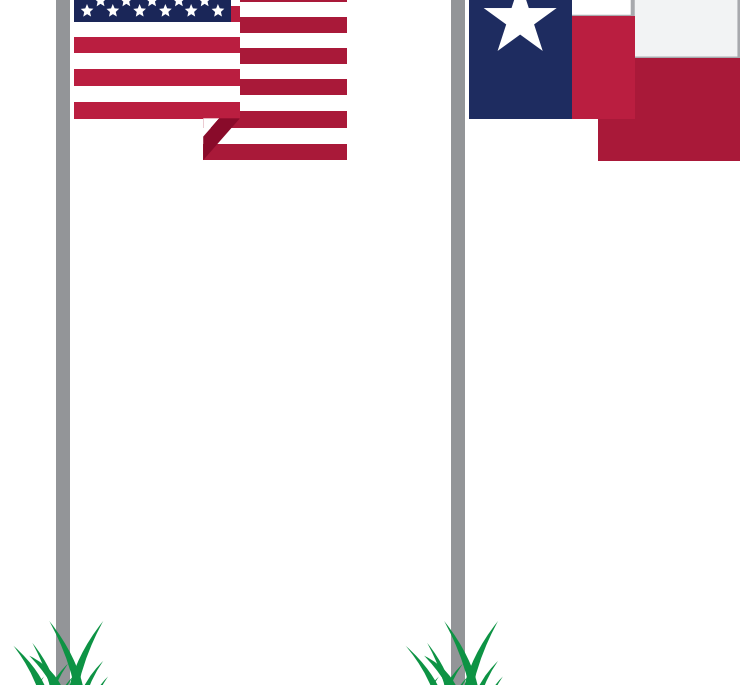
#### SAME HALYARD

THE TEXAS FLAG FLIES BELOW THE U.S. FLAG.



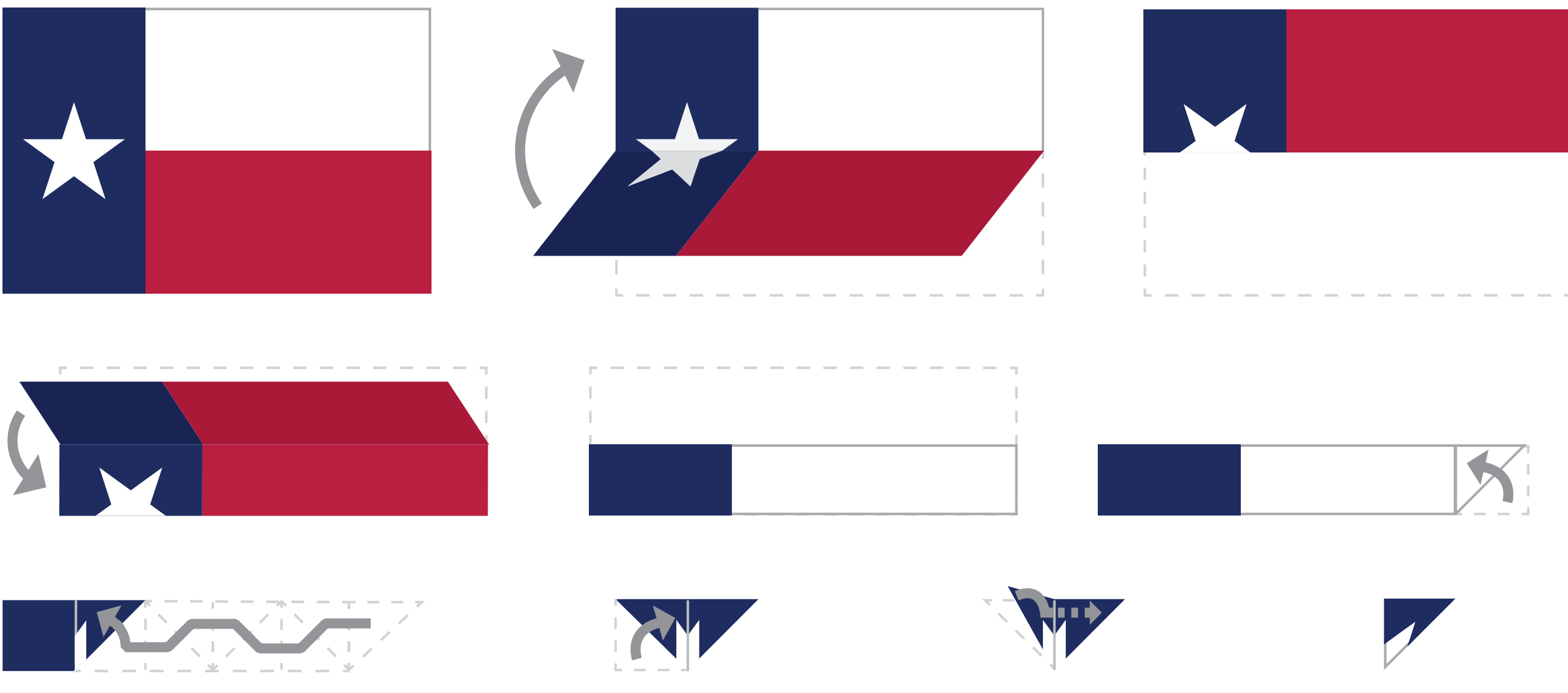
#### ADJACENT FLAGPOLES

THE TEXAS FLAG FLIES AT THE SAME LEVEL AS THE U.S. FLAG.



### FOLDING

WHEN FOLDED PROPERLY, ONLY THE BLUE PANEL AND A PIECE OF THE WHITE STAR WILL BE VISIBLE.



### RETIRING THE TEXAS FLAG

WHEN THE FLAG IS FADED, TORN, OR OTHERWISE DAMAGED, IT SHOULD BE RESPECTFULLY RETIRED. THE TEXAS FLAG CODE SUGGESTS FOLDING THE FLAG, AND THEN PLACING IT ONTO A FIRE IN A DIGNIFIED CEREMONY. THE FIRE SHOULD BE SUFFICIENTLY LARGE TO ENTIRELY CONSUME THE FLAG. ONCE FULLY CONSUMED, THE ASHES SHOULD BE BURIED.



### HISTORIC TEXAS FLAGS



#### THE COME AND TAKE IT FLAG

FIRST FLOWN BY TEXAN REBELS AT THE BATTLE OF GONZALES ON OCTOBER 2, 1835. THE COME AND TAKE IT FLAG USHERED IN THE FIRST MILITARY ENGAGEMENT OF THE TEXAS REVOLUTION.

#### THE LORENZO DE ZAVALA FLAG

LORENZO DE ZAVALA WAS THE FIRST PROVISIONAL VICE PRESIDENT OF THE REPUBLIC OF TEXAS, AND HE'S CREDITED WITH PROPOSING THE DESIGN OF THIS FLAG AT THE FIRST CONSTITUTIONAL CONVENTION AT WASHINGTON ON THE BRAZOS.



### THE SIX FLAGS OVER TEXAS

THE COUNTRIES THAT HAVE HAD SOVEREIGNTY OVER SOME OR ALL OF THE CURRENT STATE OF TEXAS:

<b>SPAIN</b>  1519 - 1685, 1690 - 1821	<b>FRANCE</b>  1685 - 1690	<b>MEXICO</b>  1821 - 1836
<b>REPUBLIC OF TEXAS</b>  1836-1845	<b>CONFEDERATE STATES OF AMERICA</b>  1861 - 1865	<b>UNITED STATES OF AMERICA</b>  1845 - 1861, 1865 - PRESENT

### THE PLEDGE OF ALLEGIANCE

"HONOR THE TEXAS FLAG; I PLEDGE ALLEGIANCE TO THEE, TEXAS, ONE STATE UNDER GOD, ONE AND INDIVISIBLE."