

## THREADED STUDS

### Strong Reusable Load Bearing Thread



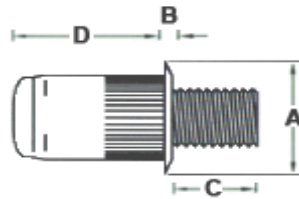
Threaded Insert Studs or sometimes known as rivet bolts are ideal for applications that require a protruding thread/bolt that can be used to attach components.

Installation is quick and simple and will not damage mounting surface.

**Diameter Sizes:** M4-M8

**Materials:** Steel

**Head Styles:** Stud small flanged



STEEL (Low Carbon Steel: clear zinc)							
Thread Size	Aerobolt Product Code	Grip Min-Max (mm) Material Thickness	Hole size ±0.1 (mm)	A ±0.4	B ±0.3	C ±0.1	D ±0.25
Low Profile Flange							
M4	ASS4-M415	0.5-2.5	6.0	9.0	1.0	15.0	11.0
M5	ASS4-M515	0.5-3.0	7.0	10.0	1.0	15.0	12.0
M6	ASS4-M620	0.5-3.0	9.0	13.0	1.5	20.0	14.0
M8	ASS4-M820	0.5-3.0	11.0	16.0	1.5	20.0	16.0

\* Longer length threads (studs) also available. Due to the variability of grip, material type and installation technique, the data provided is offered as a guide, we recommend specific testing of your application.

#### Threaded Stud Advantages

- Protruding stud
- Axial knurled body
- Wide grip range
- Low profile head

#### Threaded Stud Applications

- Automotive, Marine, Recreational, Motorcycle, Kayaks, Car spoilers, Solar panels
- Caravans, Boats, Satellite dishes etc.