

■ HUCK BOLT MAGNA-GRIP®

Offering an extra wide grip range along with strength & appearance



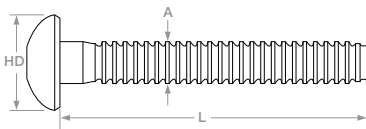
In applications where material thicknesses can vary, the world famous Huck bolt with its flexible material grip range is the ideal fastener. Huck Magna-Grip® is renowned for its superior vibration resistance and flush cut off when installed.

Huck bolt Magna-Grip® is a two piece pin & collar combo used in the fabrication of truck, truck trailers, utility trays, utility canopy bodies, emergency vehicles and numerous other steel fabrication applications where a vibration resistance fastener is critical.

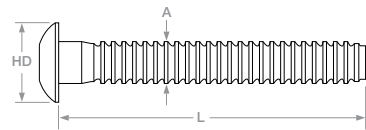
Diameter Sizes: 4.8, 6.4, 7.9, 9.5 mm

Materials: Steel, Aluminium, Stainless

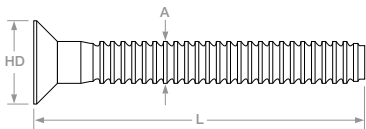
Head Styles: Dome, Countersunk, Truss, Extra Truss



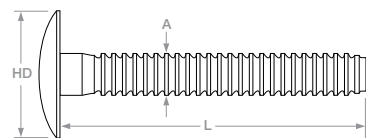
DOME HEAD



TRUSS HEAD



COUNTERSUNK HEAD



EXTRA TRUSS HEAD

HUCK BOLT PIN – (steel) Steel, Zinc Coated Clear

| Pin Diameter (A) (mm) and (in) | Huck Aerobolt Product Code | Grip Min-Max (mm) Material Thickness | Hole Size ±0.1 (mm) | Head Dia HD (mm) | Length L (mm) | Min. Shear (kN) | Min. Tensile (kN) |
|-----------------------------------|-------------------------------|---|------------------------|---------------------|------------------|--------------------|----------------------|
| Dome Head | | | | | | | |
| 4.8 mm (3/16") | HBDS-0610 | 1.6 – 15.9 | 5.2 | 10.0 | 46.3 | 7.6 | 6.2 |
| | HBDS-0620 | 6.3 – 31.8 | | | 61.3 | | |
| 6.4 mm (1/4") | HBDS-0810 | 1.6 – 15.9 | 6.8 | 13.2 | 51.8 | 9.7 | 11.3 |
| | HBDS-0820 | 6.3 – 31.8 | | | 66.9 | | |
| 7.9 mm (5/16") | HBDS-1012 | 1.6 – 19.1 | 8.5 | 16.5 | 60.3 | 13.3 | 17.3 |
| | HBDS-1022 | 14.3 – 34.9 | | | 73.0 | | |
| 9.5 mm (3/8") | HBDS-1214 | 3.2 – 22.2 | 10.0 | 19.8 | 74.6 | 18.6 | 25.0 |
| | HBDS-1226 | 19.5 – 41.3 | | | 89.8 | | |
| Truss Head | | | | | | | |
| 4.8 mm (3/16") | HBTS-0610 | 1.6 – 15.9 | 5.2 | 12.0 | 46.3 | 7.6 | 6.2 |
| | HBTS-0620 | 6.3 – 31.8 | | | 61.1 | | |
| 6.4 mm (1/4") | HBTS-0810 | 1.6 – 15.9 | 6.8 | 15.1 | 51.8 | 9.7 | 11.3 |
| | HBTS-0820 | 6.3 – 31.8 | | | 66.9 | | |
| 7.9 mm (5/16") | HBTS-1012 | 3.2 – 19.1 | 8.5 | 20.4 | 60.3 | 13.3 | 17.3 |
| | HBTS-1022 | 14.3 – 34.9 | | | 73.0 | | |
| Countersunk Head | | | | | | | |
| 4.8 mm (3/16") | HBKS-0610 | 1.6 – 15.9 | 5.2 | 9.1 | 46.3 | 7.6 | 6.2 |
| 6.4 mm (1/4") | HBKS-0810 | 1.6 – 15.9 | 6.8 | 11.5 | 51.8 | 9.7 | 11.3 |
| | HBKS-0820 | 6.3 – 31.8 | | | 65.9 | | |
| Extra Truss Head | | | | | | | |
| 6.4 mm (1/4") | HBXTS-0810 | 1.6 – 16.0 | 6.8 | 24.9 | 50.8 | 9.7 | 11.3 |
| | HBXTS-0824 | 12.7 – 38.1 | | | 72.3 | | |
| 9.5 mm (3/8") | HBXTS-1224 | 15.9 – 38.1 | 10.0 | 31.9 | 87.1 | 18.6 | 25.0 |

HUCK BOLT PIN – (Stainless) Steel, Zinc Coated Pin, Stainless Steel Head

| Pin Diameter (A) (mm) and (in) | Huck Aerobolt Product Code | Grip Min-Max (mm) Material Thickness | Hole Size ±0.1 (mm) | Head Dia HD (mm) | Length L (mm) | Min. Shear (N) | Min. Tensile (kN) |
|-----------------------------------|-------------------------------|---|------------------------|---------------------|------------------|-------------------|----------------------|
| Truss Head | | | | | | | |
| 6.4 mm (1/4") | HBTSS-0810 | 1.6 – 15.9 | 6.8 | 15.1 | 51.8 | 9.7 | 11.3 |
| 9.5 mm (3/8") | HBTSS-1214 | 3.2 – 22.2 | 10.0 | 23.4 | 74.3 | 18.6 | 25.0 |

Information provided is a guide, specific testing is recommended. *Contact us for more information. Grip range; this is the thickness of the material to be bolted or riveted, please note this is not the length of the fastener. Shear; point of failure with force applied on the vertical. Tensile; point of failure with force applied on the horizontal.

HUCK BOLT BENEFITS

- Extended material grip range
- Superior vibration resistant
- Flush pin break to the collar
- No special training required

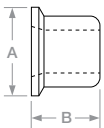
HUCK BOLTS APPLICATIONS

- Ute tray & canopy body building
- Truck & trailer body building
- Emergency & Utility Vehicles
- Sheet metal fabrication
- Building construction & more

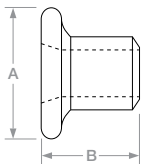
HUCK BOLT PIN – (aluminium) Alum. 7075

| Pin Diameter (A) (mm) and (in) | Huck Aerobolt Product Code | Grip Min-Max (mm) Material Thickness | Hole Size ±0.1 (mm) | Head Dia HD (mm) | Length L (mm) | Min. Shear (kN) | Min. Tensile (kN) |
|-----------------------------------|-------------------------------|---|------------------------|---------------------|------------------|--------------------|----------------------|
| Dome Head | | | | | | | |
| 4.8 mm (3/16") | HBDA-0610 | 1.6 – 15.9 | 5.1 | 10.0 | 46.3 | 3.3 | 4.0 |
| 6.4 mm (1/4") | HBDA-0810 | 1.6 – 15.9 | 6.6 | 13.2 | 51.8 | 5.3 | 7.2 |
| | HBDA-0820 | 6.3 – 31.8 | | | 66.9 | | |
| 7.9 mm (5/16") | HBDA-1012 | 1.6 – 19.1 | 8.2 | 16.5 | 60.3 | 9.7 | 11.1 |
| 9.5 mm (3/8") | HBDA-1214 | 3.2 – 22.2 | 10.0 | 19.8 | 74.6 | 13.3 | 17.7 |
| | HBDA-1226 | 19.5 – 41.3 | | | 89.4 | | |
| Truss Head | | | | | | | |
| 4.8 mm (3/16") | HBFA-0610 | 1.6 – 15.9 | 5.1 | 10.0 | 46.3 | 3.3 | 4.0 |
| | HBFA-0620 | 6.3 – 31.8 | | | 61.1 | | |
| 6.4 mm (1/4") | HBTA-0810 | 1.6 – 15.9 | 6.6 | 15.1 | 51.8 | 5.3 | 7.2 |
| Countersunk Head | | | | | | | |
| 4.8 mm (3/16") | HBKA-0610 | 1.6 – 15.9 | 5.1 | 9.1 | 46.3 | 5.3 | 7.2 |
| Extra Truss Head | | | | | | | |
| 6.4 mm (1/4") | HBXTA-0824 | 12.7 – 38.1 | 6.6 | 27.1 | 72.3 | 5.3 | 7.2 |

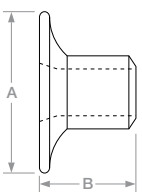
HUCK COLLARS



STANDARD



MEDIUM



WIDE

HUCK BOLT COLLAR – (steel) Carbon Steel, Zinc Coated, Gold

| Collar Description Hole (mm) (in) | Huck Aerobolt Product Code | A ±0.25 (mm) | *B ±0.25 (mm) |
|--------------------------------------|-------------------------------|-----------------|------------------|
| Standard Flange | | | |
| 4.8 mm (3/16") | HCS-06 | 9.8 | 7.2 |
| 6.4 mm (1/4") | HCS-08 | 13.2 | 9.8 |
| 7.9 mm (5/16") | HCS-10 | 16.4 | 11.4 |
| 9.5 mm (3/8") | HCS-12 | 19.4 | 13.1 |
| Medium Flange | | | |
| 6.4 mm (1/4") | HCS-08MF | 18.3 | 11.9 |
| Wide Flange | | | |
| 4.8 mm (3/16") | HCS-06WF | 19.4 | 8.0 |
| 6.4 mm (1/4") | HCS-08WF | 25.4 | 11.7 |

HUCK BOLT COLLAR – (aluminium) Collar 6061

| Collar Description Hole (mm) (in) | Huck Aerobolt Product Code | A ±0.25 (mm) | *B ±0.25 (mm) |
|--------------------------------------|-------------------------------|-----------------|------------------|
| Standard Flange | | | |
| 4.8 mm (3/16") | HCA-06 | 9.8 | 7.2 |
| 6.4 mm (1/4") | HCA-08 | 13.2 | 9.8 |
| 7.9 mm (5/16") | HCA-10 | 16.4 | 11.4 |
| 9.5 mm (3/8") | HCA-12 | 19.4 | 13.1 |
| Wide Flange | | | |
| 4.8 mm (3/16") | HCA-06WF | 19.4 | 8.0 |

*The difference in "B" heights between the standard collars and the two other options will reduce the maximum grip accordingly to the difference.