



UTILITY BLACK IRON GATE FITTINGS

Monkey tail bolt.
Square tensioned.
Black japanned.
Z020MT.1 457mm long



Bow handle bolt.
Square tensioned.
Black japanned.
Z021BH.1 457mm long
Z021BH.2 762mm long
Z021BH.3 610mm long

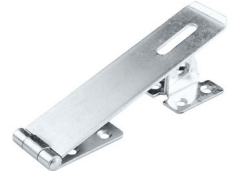


Z021BH.2 will be discontinued when stock is sold.

Strong tee hinge.
300mm long.
Black japanned.
Z120T



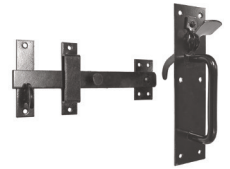
Hasp and staple.
Bright zinc plated.
ZHS617.1 115mm
ZHS617.2 150mm



Cast iron cabin hook.
Black japanned.
ZCH37.1 152mm



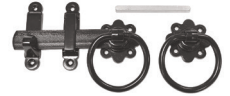
Suffolk latch with thumb piece.
Medium duty.
Black japanned.
Z20/4S



Auto gate catch.
Medium duty multi-purpose.
Black japanned.
Z1932



Plain ring gate latch.
With straight latch bar, catch and keep.
150mm long.
Black japanned.
Z1138.6



Chain bolt.
200mm long.
Black japanned.
Z66



Garage door drop bolt.
300mm long.
Black japanned.
Z260



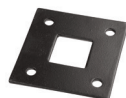
Foot operated bolt.
200mm long.
Black japanned.
Z68



Brenton pattern padlock bolt.
Z1A.1 152mm electro galv
Z1A.2 203mm electro galv
Z2A.1 152mm black jap
Z2A.2 203mm black jap



Flat receiver plate.
For square bolt.
Black japanned.
Z0584



Cast receiver socket.
With 16mm square hole.
For concreting in.
Electro galvanised.
Z0582



Price shown for * items may be subject to change. Please check before ordering.
No charge for split boxes, but please try to order boxed quantity multiples where possible.
All products usually available ex-stock except those marked with *. Call for lead time.
Additional manufacturers carriage charges may apply for * items.