

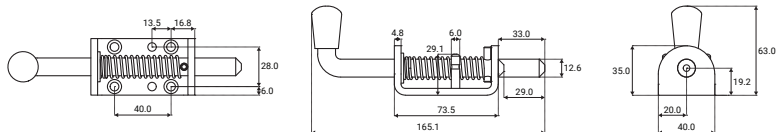


SPRING BOLTS NEW

Spring bolts are a simple and effective bolting method, and are used in a variety of applications. Here we offer a medium duty range, in both steel and stainless steel, with base and peg retaining options.

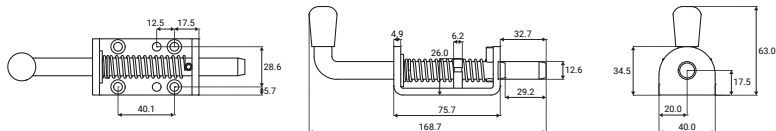
Medium duty spring bolt.
Zinc plated mild steel.
74x40mm plate.
165mm long x 12.6mm diameter shoot.
33mm projection.
Peg retaining.

ZSB01



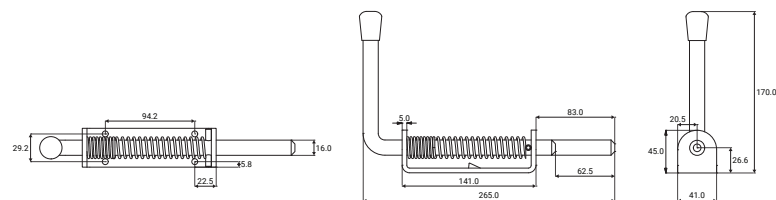
Medium duty spring bolt.
Grade 304 stainless steel.
76x40mm plate.
169mm long x 12.6mm diameter shoot.
33mm projection.
Peg retaining.

ZSB02



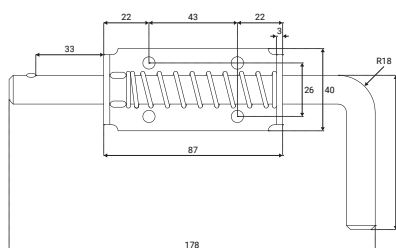
Medium duty spring bolt.
Zinc plated mild steel.
141x41mm plate.
265mm long x 16mm diameter shoot.
83mm projection.
Base retaining.

ZSB03



Medium duty spring bolt.
Grade 316 brushed stainless steel.
87x40mm plate.
178mm long x 14mm diameter shoot.
55mm projection.
Base retaining.

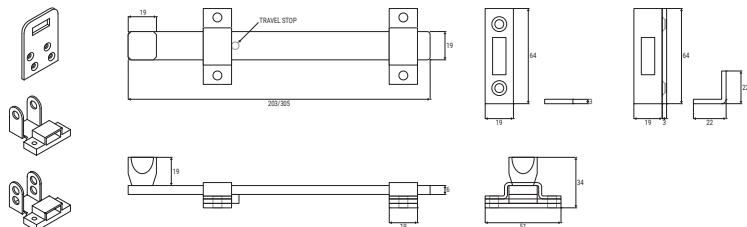
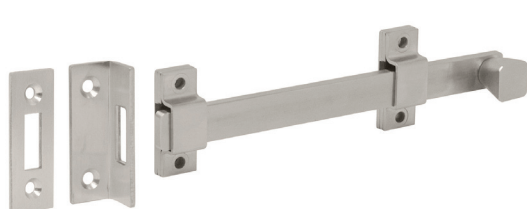
191515



N1805 SERIES SLIDE BOLT NEW

The N1805 is a heavy duty 6mm thick solid stainless steel slide bolt. Manufactured from grade 304 stainless steel, it is available from stock 203mm and 305mm long, but can also be supplied custom lengths to special order.

Each bolt is supplied with two strike plates options to enable the bolt to be mounted at the bottom or top of the door, and there is also an optional rim strike to special order to enable mounting horizontally in the traditional lock area of the door. The N1805 can also be converted to a lockable bolt by ordering the special locking mounting brackets which enable the use of a padlock to lock the bolt. Stainless steel fixing screws are supplied as standard.



REF	DESCRIPTION
N1815	Complete 203mm long slide bolt with standard mounting brackets, strikes and screws. US32D.
N1825	Complete 305mm long slide bolt with standard mounting brackets, strikes and screws. US32D.
N1805-R*	Optional rim strike plate. US32D
N1805-L*	Optional single locking bracket. US32D
N1805-DL*	Optional double locking bracket. US32D

Price shown for * items may be subject to change. Please check before ordering.
No charge for split boxes, but please try to order boxed quantity multiples where possible.
All products usually available ex-stock except those marked with *. Call for lead time.
Additional manufacturers carriage charges may apply for * items.