

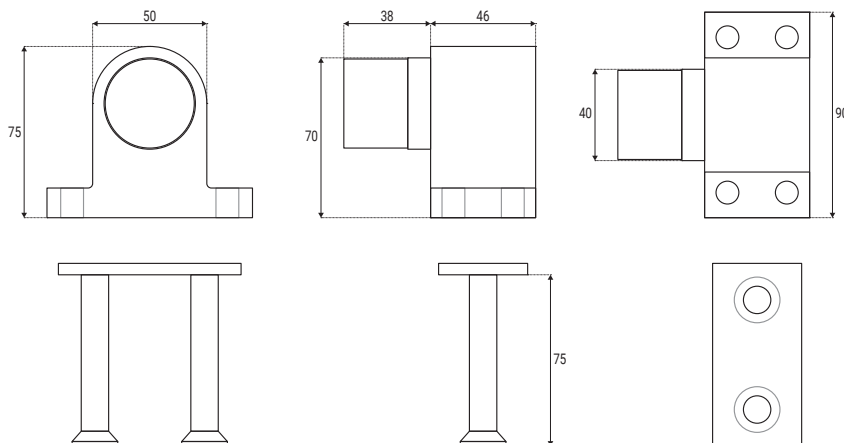
SPRING LOADED DOORSTOP EXTENDED

Heavy duty sprung doorstop suitable for external use. Silver sprayed finish. With 38mm diameter black spring-loaded rubber buffer. Base 90x46mm, casting 75mm high overall. Accepts four heavy duty fixings, not supplied. Suitable for doors weighing up to 100kg. The doorstop should be mounted as far away as possible from the hinge side of the door.

Successfully tested to Grade 4 (240 hours neutral salt spray exposure) in accordance with BS EN 1670:2007 Building Hardware - Corrosion Resistance. Report No WIL 392103 refers.


Z2018HD

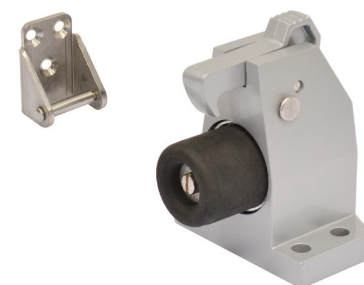
REF	DESCRIPTION
Z2018HD	Spring-loaded buffer, silver sprayed
Z2018HD-BI NEW	Build in option for concrete fix, including plate and bolts, zinc plated


Z2018HD-BI

SPRING LOADED DOOR STOP & HOLDER NEW

The new Z2019HD is a heavy duty floor mounted sprung door stop, which can also hold the door open. The heavy duty spring within the unit acts as a shock absorber if the door is flung open, protecting the door and frame. Each unit is supplied with a stainless steel catch which is mounted on the door face, this catch engages with the hook arm on the main unit when the door is opened, holding the door in the open position. The door is released by simply pressing the hook arm with your foot. The hold open function can be disengaged by sliding the release slider across, meaning the unit operates as a sprung door stop only.

Suitable for doors weighing up to 120kg, the Z2019HD is manufactured from silver sprayed cast aluminium with a base size of 90x55mm and an overall casting height of 110mm, with a 39mm diameter black rubber buffer. Accepts four heavy duty fixings, not supplied. Not suitable for use on fire doors.


Z2019HD

REF	DESCRIPTION
Z2019HD	Spring loaded door stop and holder, silver sprayed

DURHAM PATTERN DOOR BUFFERS

"Durham Pattern" heavy duty door buffers. To suit sliding doors and outward opening doors. Suitable for external use. When fitted to the ground they limit the opening angle of external outward opening doors. A heavy duty black rubber door buffer measuring 150 x 50 x 50mm is securely fitted to satin stainless steel angle plate. The ZDP.1 base plate measures at 60 x 150mm while the ZDP.2 base plate measures at 100x150mm, both are drilled with three 10mm holes for bolt fixing to ground. Ground fixings not included.

Grade 304 stainless steel as standard which has been successfully tested to Grade 4 (240 hours neutral salt spray exposure) in accordance with BS EN 1670:2007 Building Hardware - Corrosion Resistance. Report No WIL 392103 refers. Also available Grade 316 to special order.

REF	DESCRIPTION
ZDP.1	Durham Pattern heavy duty door buffer, standard upstand, 60mm high
ZDP.2	Durham Pattern heavy duty door buffer, extended upstand, 100mm high


ZDP.1 (Standard)

ZDP.2 (Extended)