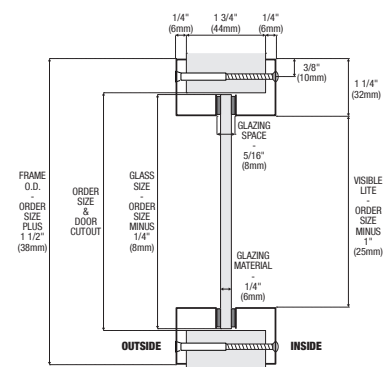
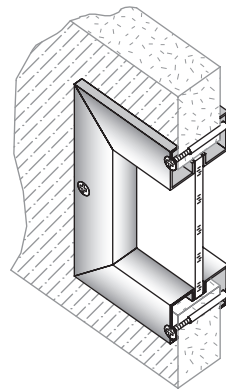


ANEMOSTAT METAL VISION FRAMES

FGS-75 RECTANGULAR METAL VISION PANEL - TO SUIT 44-46MM THICK DOORS & 6MM THICK GLASS

The FGS is installed by drilling 6mm holes through the door, around the perimeter of the door cut-out, and bolting through.

- Material: 18GA cold rolled steel and Grades 304 and 316 stainless steel.
- Finish: Galvanised grey primed as standard, other finishes available to special order.
- Door thickness: For 44-46mm metal or timber doors. FGS-IS suits other door thicknesses.
- Glass thickness: 6mm as standard, glass pocket of 8mm allows for tape or compound to be used on one or both sides of the glass.
- Aesthetics: Tight mitred corners, 90° angle on glass stop gives maximum visible light area.
- Fixings: Special security fasteners available, see page 114.



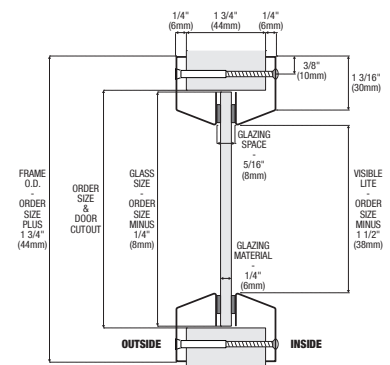
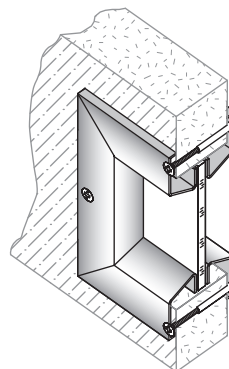
REF	SIZE IN INCHES W X H	CUT-OUT MM W X H	CLEAR VISION MM W X H	GLASS SIZE MM (NOT INCLUDED)
STANDARD SQUARES AND RECTANGLES TO SUIT 44-46MM DOORS AND 6MM THICK GLASS - GALV GREY PRIMED, OTHER SIZES TO SPECIAL ORDER				
FGS-75 1022*	10 x 22	254 x 559	229 x 534	246 x 551
FGS-75 1030*	10 x 30	254 x 762	229 x 737	246 x 754
FGS-75 1048*	10 x 48	254 x 1219	229 x 1194	246 x 1211
FGS-75 1212*	12 x 12	305 x 305	280 x 280	297 x 297
FGS-75 1818*	18 x 18	457 x 457	432 x 432	449 x 449
FGS-75 2020*	20 x 20	508 x 508	483 x 483	500 x 500
FGS-75 2030*	20 x 30	508 x 762	483 x 737	500 x 754
FGS-75 2432*	24 x 32	610 x 813	585 x 788	602 x 805
NON-STANDARD SQUARES AND RECTANGLES TO SUIT 44-46MM DOORS AND 35MM GLASS - GALV GREY PRIMED				
FGS-IS 1030-44/35	10 x 30	254 x 762	229 x 737	246 x 754
FGS-IS 1616-44/35	16 x 16	406 x 406	381 x 381	398 x 398
NON-STANDARD SQUARES AND RECTANGLES TO SUIT 54-56MM DOORS AND 35MM GLASS - GALV GREY PRIMED				
FGS-IS 1030-54/35	10 x 30	254 x 762	229 x 737	246 x 754
FGS-IS 1616-54/35	16 x 16	406 x 406	381 x 381	398 x 398

Other sizes available from 102 x 102mm up to 813 x 1829mm cut-out in door.

BFL-75 RECTANGULAR METAL VISION PANEL - TO SUIT 44-46MM THICK DOORS & 6MM THICK GLASS

The BFL is installed by drilling 6mm holes through the door, around the perimeter of the door cut-out. Frame has countersunk mounting holes for #8x32 Phillips head steel through bolts with blank head on one side for flush appearance.

- Material: 18GA cold rolled steel and Grades 304 and 316 stainless steel.
- Finish: Galvanised grey primed as standard, other finishes available to special order.
- Door thickness: For 44-46mm metal or timber doors.
- Glass thickness: 6mm as standard, glass pocket of 8mm allows for tape or compound to be used on one or both sides of the glass.
- Aesthetics: Tight mitred corners, bevelled glass stop for a clean tapered look.
- Fixings: Special security fasteners available, see page 114.



REF	SIZE IN INCHES W X H	CUT-OUT MM W X H	CLEAR VISION MM W X H	GLASS SIZE MM (NOT INCLUDED)
STANDARD SQUARES AND RECTANGLES TO SUIT 44-46MM DOORS AND 6MM THICK GLASS - GALV GREY PRIMED, OTHER SIZES TO SPECIAL ORDER				
BFL-75 1022*	10 x 22	254 x 559	216 x 521	246 x 551
BFL-75 1030*	10 x 30	254 x 762	216 x 724	246 x 754
BFL-75 1048*	10 x 48	254 x 1219	216 x 1181	246 x 1211
BFL-75 1212*	12 x 12	305 x 305	267 x 267	297 x 297
BFL-75 1818*	18 x 18	457 x 457	419 x 419	449 x 449
BFL-75 2020*	20 x 20	508 x 508	470 x 470	500 x 500
BFL-75 2030*	20 x 30	508 x 762	470 x 724	500 x 754
BFL-75 2432*	24 x 32	610 x 813	572 x 775	602 x 805

Other sizes available from 102 x 102mm up to 813 x 1829mm cut-out in door.