

ANEMOSTAT-IS METAL VISION FRAMES REVISED

LOPRO-IS LOW PROFILE METAL VISION PANEL - TO SUIT VARIOUS DOOR AND GLASS THICKNESSES

The LoPro-IS is very similar to the LoPro on pages 74-75 but it uses five different profiles to accommodate a range of door and glass thickness combinations. It is easy to install and provides a low profile, "flush to the door look". Sheet metal screws pass through the door cut-out, and fasten to the opposite side of the vision frame, thus eliminating the need to drill the door for through bolts and saving installation time and labour. It also leaves the corridor side of the frame free of fasteners for added security and a cleaner, more aesthetic appearance.

Material: 20GA cold rolled steel and Grades 304 and 316 stainless steel.
Finish: Galvanised grey primed as standard, other finishes available to special order.

Aesthetics: Tight mitred corners, bevelled glass stop and low profile, provide a clean tapered look.

Fixings: Special security fasteners available, see page 114.

Fire ratings: For single glazed LoPro-IS fire rated applications, the fire rating details listed on page 74 for the standard LoPro apply. In summary; steel doors up to 240 minutes integrity and timber doors up to 60 minutes integrity. A suitable fire rated glass (page 95) is to be used - size limitations apply.

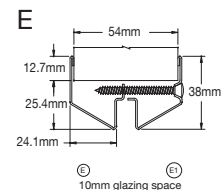
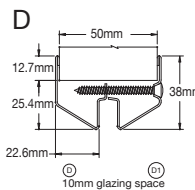
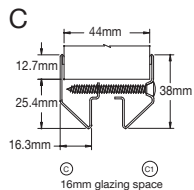
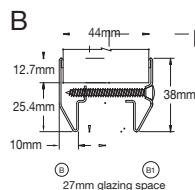
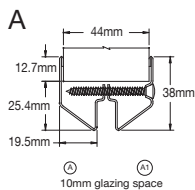
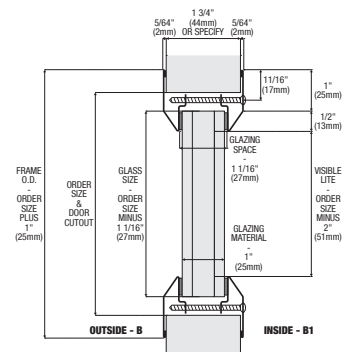
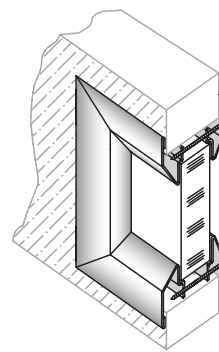
NEW Following new testing, we now have dedicated test evidence for the LoPro-IS when used with a double glazed unit (DGU) within fire doors. The tested DGU incorporated Firelite glass so therefore they can be used in steel doors for up to 240 minutes integrity, and timber doors for up to 60 minutes integrity. Furthermore, now that the LoPro-IS has been proven with a DGU, other glass types can be used providing they have sufficient test evidence when incorporated into a DGU. Assessment report 190621/A Issue 4 should be consulted for full details.

For both single and double glazed fire rated applications, FS9009 "ceramic type" glazing tape (page 98) should be used for steel and timber doors. For timber fire rated doors, FS4004 aperture liner (page 99) should also be used.

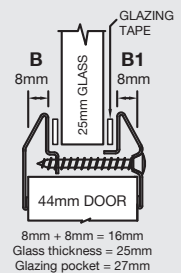
Corrosion: LoPro vision frames (both galvanised mild steel and grade 304 stainless steel) have been successfully tested to Grade 4 (240 hours neutral salt spray exposure) in accordance with BS EN 1670:2007 Building Hardware - Corrosion Resistance. Report No WIL 392103 dated 30.01.2018 refers.

Door Thickness: Door thickness of 44mm, 50mm and 54mm are standard. The door thickness can vary based on the thickness of glass used, up to a maximum of 70mm, provided longer fixing screws are used. If larger glazing pockets are required, then the FGS-IS can be used as this will suit doors and panels up to 100mm thick.

Profiles: There are five different profiles in the LoPro-IS range; profiles A, B, C, D and E. They can be used in combination to suit various door, glass and double glazed unit thicknesses. **The simplest way to think about it is that if you add 10mm to the glazing pocket, you also add 10mm to the door thickness.** It is also possible to specify which side of the frame should have concealed fixings and which should have screw fixings. (1 = screw side). On pages 80-81 we show the most popular door and glass thickness combinations that can be achieved using profiles A, B, C, D and E. Please note that with some combinations the glass may be offset within the door thickness.



REF	SIZE IN INCHES W X H	CUT-OUT MM W X H	CLEAR VISION MM W X H	GLASS SIZE MM (NOT INCLUDED)	FRAME PROFILES A, B, C, D, E
STANDARD SQUARES AND RECTANGLES TO SUIT 44-46MM DOORS AND 25MM GLASS - GALV GREY PRIMED, OTHER SIZES TO SPECIAL ORDER					
LOPRO-IS 0630-44/25 BB1	6 x 30	152 x 762	101 x 711	125 x 735	
LOPRO-IS 0808-44/25 BB1	8 x 8	203 x 203	152 x 152	176 x 176	
LOPRO-IS 0820-44/25 BB1	8 x 20	203 x 508	152 x 457	176 x 481	
LOPRO-IS 0830-44/25 BB1	8 x 30	203 x 762	152 x 711	176 x 735	
LOPRO-IS 0842-44/25 BB1	8 x 42	203 x 1067	152 x 1016	176 x 1040	
LOPRO-IS 1010-44/25 BB1*	10 x 10	254 x 254	203 x 203	227 x 227	
LOPRO-IS 1014-44/25 BB1*	10 x 14	254 x 356	203 x 305	227 x 329	
LOPRO-IS 1022-44/25 BB1	10 x 22	254 x 559	203 x 508	227 x 532	
LOPRO-IS 1030-44/25 BB1	10 x 30	254 x 762	203 x 711	227 x 735	
LOPRO-IS 1048-44/25 BB1	10 x 48	254 x 1219	203 x 1168	227 x 1192	
LOPRO-IS 1060-44/25 BB1	10 x 60	254 x 1524	203 x 1473	227 x 1497	
LOPRO-IS 1131-44/25 BB1	11 x 31	279 x 787	228 x 736	252 x 760	
LOPRO-IS 1212-44/25 BB1	12 x 12	305 x 305	254 x 254	278 x 278	
LOPRO-IS 1224-44/25 BB1*	12 x 24	305 x 610	254 x 559	278 x 583	
LOPRO-IS 1624-44/25 BB1	16 x 24	406 x 610	355 x 559	379 x 583	
LOPRO-IS 1717-44/25 BB1	17 x 17	431 x 431	380 x 380	404 x 404	
LOPRO-IS 1818-44/25 BB1	18 x 18	457 x 457	406 x 406	430 x 430	
LOPRO-IS 2020-44/25 BB1	20 x 20	508 x 508	457 x 457	481 x 481	
LOPRO-IS 2030-44/25 BB1	20 x 30	508 x 762	457 x 711	481 x 735	
LOPRO-IS 2060-44/25 BB1	20 x 60	508 x 1524	457 x 1473	481 x 1497	
LOPRO-IS 2424-44/25 BB1	24 x 24	610 x 610	559 x 559	583 x 583	
LOPRO-IS 2432-44/25 BB1	24 x 32	610 x 813	559 x 762	583 x 786	
LOPRO-IS 2436-44/25 BB1	24 x 36	610 x 914	559 x 863	583 x 887	



Other sizes available from 102 x 102mm up to 813 x 1829mm cut-out in door. Also available in stainless steel.