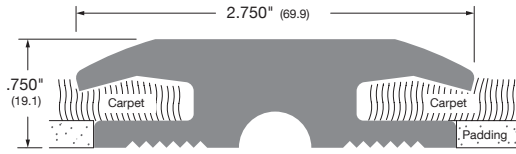


ZERO RUBBER CARPET DIVIDERS

Sizes: 914mm (3 ft), 1219mm (4 ft), 1829mm (6 ft), 2134mm (7 ft), 3048mm (10 ft). Other sizes available to order, maximum 3048mm.

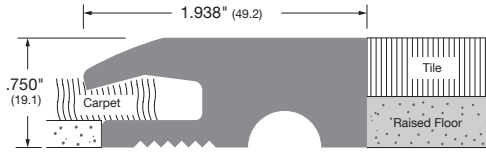
Finish: R=rubber.

Availability: usually ex-stock except items marked with an asterisk, which are to special order (3-5 weeks) depending on quantity. NH = No Holes.



1685R

70mm wide x 19mm high Traction Tread™ rubber carpet divider threshold. Supplied NH standard.
1685R* Black rubber



1686R

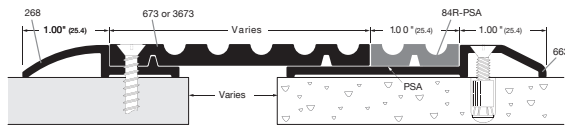
46mm wide x 19mm high Traction Tread™ rubber carpet divider threshold. Supplied NH standard.
1686R* Black rubber

ZERO EXPANSION JOINT THRESHOLDS

Sizes: 914mm (3 ft), 1219mm (4 ft), 1829mm (6 ft), 2134mm (7 ft), 3048mm (10 ft). Other sizes available to order, maximum 3048mm.

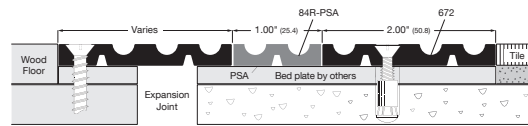
Finishes: A=mill aluminium. R=rubber.

Availability: usually ex-stock except items marked with a asterisk, which are to special order (3-5 weeks) depending on quantity.



SERIES 671

Surface mounted floor covers for 25.4mm (1.00") expansion joints.



SERIES 670

Recessed mounted floor covers for 25.4mm (1.00") expansion joints.

COMPONENTS SHOWN ABOVE - OTHER FLAT PLATE SIZES AVAILABLE

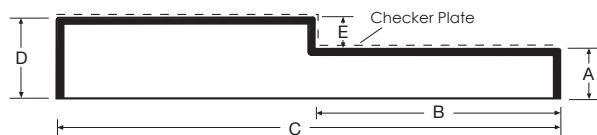
- 84R** 25mm wide x 6mm high Traction Tread™ rubber expansion strip
- 268A** 46mm wide x 9.5mm high aluminium threshold rest
- 663A** 76mm wide x 9.5mm high aluminium butt threshold
- 672A** 51mm wide x 6.4mm high aluminium threshold plate
- 673A** 76mm wide x 6.4mm high aluminium threshold plate
- 3673A*** 76mm wide x 6.4mm high aluminium traction tread plate, rubber inserts

Please refer to page 30 for plates wider than 672A & 673A (674A, 675A, 676A, 678A & 6710A) and page 31 for plates wider than 3673A (3674A, 3675A, & 3676A).

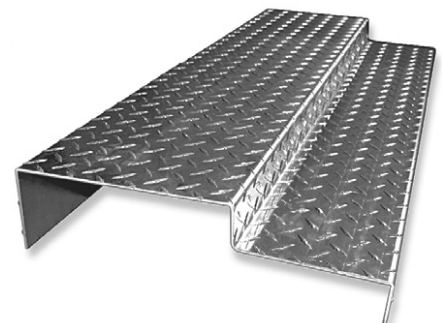
CHECKER PLATE BULKHEAD THRESHOLDS

We now offer custom made checker plate bulkhead thresholds to reduce the risk of slipping. These are also known as diamond plate, chequer plate or tread plate thresholds. They have a regular pattern of raised diamonds or lines on the surface, and are made of aluminium, mild steel or stainless steel. Our standard thickness is 3mm although other thicknesses are available. Since these bulkhead thresholds are made to custom order, please advise dimensions A, B, C, D and E when ordering. This plate may also be supplied as square or rectangular flat plates for door kicking plates, mid-rail plates and crash plates.

- 669 DP-A*** 3mm thick aluminium five bar tread plate
- 669 DP-S*** 3mm thick mild steel single bar tread plate
- 669 DP-STST*** 3mm thick stainless steel single bar tread plate



Custom Order
Specify dimensions
A, B, C, D, E
(Minimum 45mm for dimension E)



All products usually available ex-stock except those marked with *. Call for lead time.
Additional manufacturers carriage charges may apply for * items.
No charge for split boxes, but please try to order boxed quantity multiples where possible.