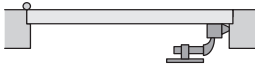
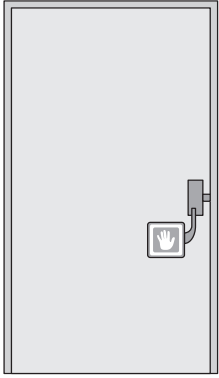
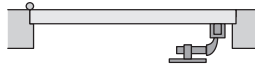
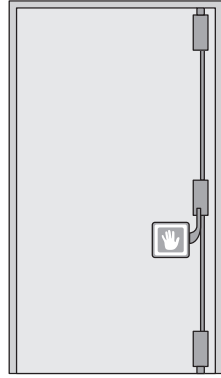


CORNI MINIPAD 423 EMERGENCY EXIT DEVICES CE

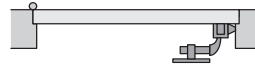
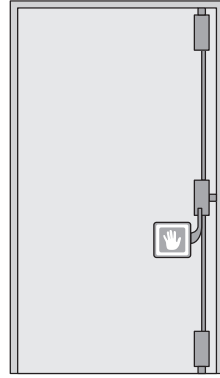


MINIPAD PUSH-PAD
 With standard side latch
 (black with green & white pad)
 Ref. **CM1040.00**
 (RH illustrated)
 Comprising:
N42306 00 100Z RH
 push-pad latch mech (RH)
 OR
N42306 00 200Z LH
 push-pad latch mech (LH)

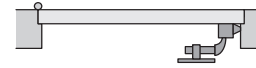
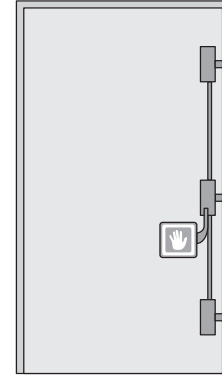


SINGLE DOOR SET (2 POINT)
 Using vertical top & bottom latches
 with central side latch nullified
 (black with green & white pad)
 Ref. **CM1240.0Z**
 (RH illustrated)
 Comprising:
N42306 00 100Z/200Z RH/LH
 push-pad latch mech (advise hand)
N03429 00 000
 vertical pullman latch kit
N04444 00 000
 vertical rods & covers, 2200mm

CP0223.30

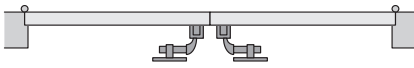
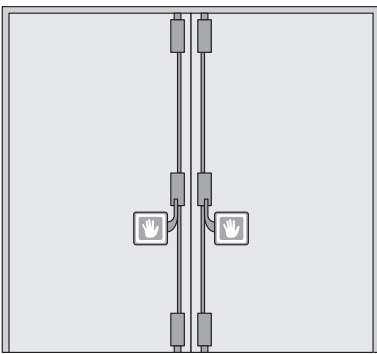


SINGLE DOOR SET (3 POINT)
 Using top, bottom & central latches
 with central side latch active
 (black with green & white pad)
 Ref. **CM1240.0Z**
 (RH illustrated)
 Comprising:
N42306 00 100Z/200Z RH/LH
 push-pad latch mech (advise hand)
N03429 00 000
 vertical pullman latch kit
N04444 00 000
 vertical rods & covers, 2200mm

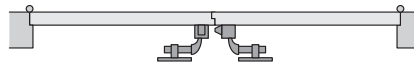
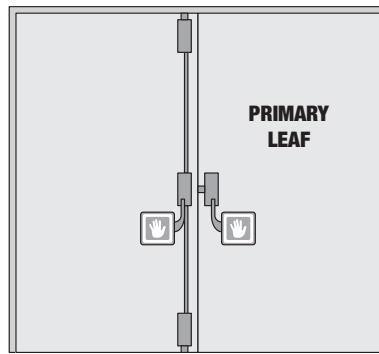


SINGLE DOOR SET (3 POINT)
 Using three side latches
 with central side latch active
 (black with green & white pad)
 Ref. **CM1246.0Z**
 (RH illustrated)
 Comprising:
N42306 00 100Z/200Z RH/LH
 push-pad latch mech (advise hand)
N03429 00 050
 horizontal pullman latch kit
N04444 00 000
 vertical rods & covers, 2200mm

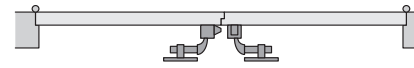
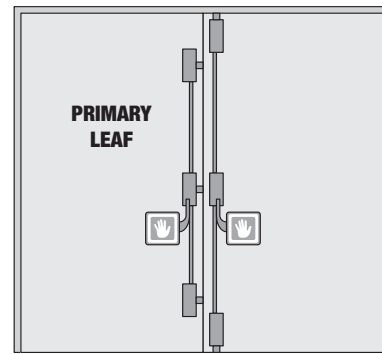
CP0273.30



DOUBLE DOOR SET
 Plain meeting stiles with both central side
 latches nullified
 (black with green & white pads)
 Ref. **CM2480.0Z**
 Comprising: (2 x **CM1240.0Z**)
 1 x **N42306 00 100Z** push-pad latch mech (RH)
 1 x **N42306 00 200Z** push-pad latch mech (LH)
 2 x **N03429 00 000** vertical pullman latch kit
 2 x **N04444 00 000** vertical rods & covers, 2200mm



DOUBLE DOOR SET
 Standard set for rebated meeting stiles or astragal
 with one central side latch nullified
 (black with green & white pads)
 Ref. **CM2481.0Z**
 Comprising: (**CM1240.0Z** + **CM1040.00**)
 1 x **N42306 00 100Z** push-pad latch mech (RH)
 1 x **N42306 00 200Z** push-pad latch mech (LH)
 1 x **N03429 00 000** vertical pullman latch kit
 1 x **N04444 00 000** vertical rods & covers, 2200mm



DOUBLE DOOR SET
 3 point set for rebated meeting stiles or astragal
 with one central side latch nullified
 (black with green & white pads)
 Ref. **CM2482.0Z**
 Comprising: (**CM1240.0Z** + **CM1246.0Z**)
 1 x **N42306 00 100Z** push-pad latch mech (RH)
 1 x **N42306 00 200Z** push-pad latch mech (LH)
 1 x **N03429 00 000** vertical pullman latch kit
 1 x **N03429 00 050** horizontal pullman latch kit
 2 x **N04444 00 000** vertical rods & covers, 2200mm