

ZEROPLUS LOCKCASES 7200 SERIES CE REVISED

7200 Series is a range of high quality heavy-duty Euro Profile lockcases, with 60mm backset and 72mm centres. Manufactured in accordance with DIN 18251 and CE marked. Modular in design meaning one door prep suits all functions. The range offers a heavy sprung stainless steel clamping follower, solid stainless steel latch & deadbolts, reversible latchbolt and a one piece stainless steel square or radius forend. The latchbolt is light sprung for easy operation and is also guided, while the deadbolt has a 20mm double throw. The existing range offers the four main functions; sashlock, deadlock, latch & nightlatch with an escape lock coming soon.

NEW Following a recent successful fire test, we are pleased to report that the 7200 Series lockcases are now positively assessed for use in 240 minute uninsulated steel fire doors. Previously assessed for just 60 minutes, this new testing enables the complete range shown below to be installed in steel fire doors for up to a 240 minute duration to BS EN 1634-1:2000. Due to previous testing, the assessment also covers the 7200 series for use in 30 minute and 60 minute insulated timber doors, again to BS EN 1634-1:2000. Copy of EXOVA WF Assessment Report 190867 Issue 6 dated 12.09.2018 available on request.

A complete Zero ZLP44 intumescent lock pack (see page 72) must be used for 60 minute fire resistance on timber doors. For 30 minute timber doors the lockcase body does not need intumescent protection, but ZLP44-812 intumescent should be fitted behind the lock forend and ZLP44-675 behind the strike plate. No intumescent is required around locks or behind strike plates on steel doors.

- 60mm backset across the range, modular case size.
- 72mm centres (where applicable), euro profile.
- Tested to EN 12209:2003.
- Extra flat strike plates and plastic dust boxes available.
- One piece solid 3mm thick x 20mm or 24mm wide x 235mm long square or radius forend, as indicated.
- Suitable for use on fire/smoke resisting doorset assemblies.
- Grade 304 Stainless Steel strike plate, forend, latchbolt, deadbolt and follower.

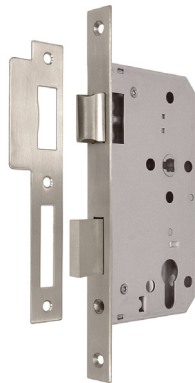
- 8mm bolt through fixing holes at 38mm centres.
- Heavy duty follower springing for use with unsprung furniture.
- Easily reversible latchbolt by means of pushing the latchbolt from the rear of the case.
- 11.7mm projection on latchbolt & 20mm projection on deadbolt.
- DoP's on our website.
- See lock plate security astragals on page 159 and cylinders on pages 145-147.

7210 MORTICE SASHLOCK

From outside, key operates deadbolt and latchbolt, and lever handle retracts latchbolt. From inside, key or thumbturn operates deadbolt and latchbolt, and lever handle retracts latchbolt. 20mm double throw deadbolt.

- 7210.20S** with 20x235mm square forend.
- 7210.20R** with 20x235mm radius forend.
- 7210.24S** with 24x235mm square forend.
- 7210.24R** with 24x235mm radius forend.

(Box Qty 20)

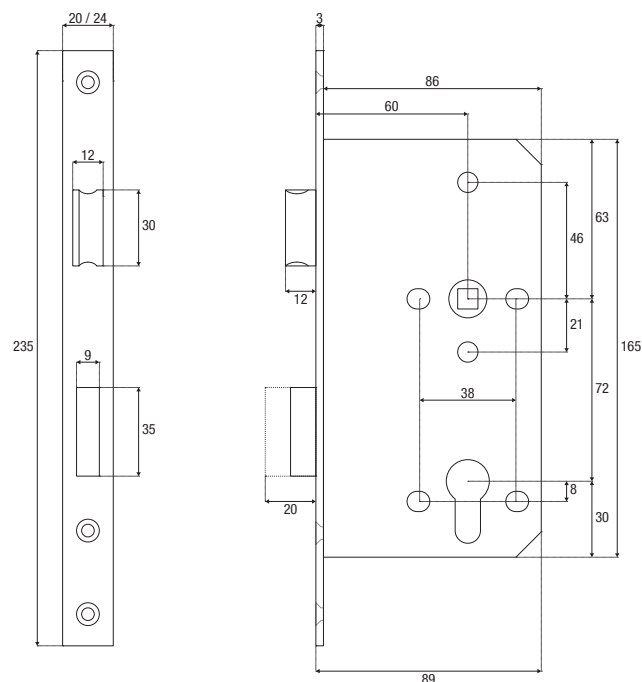
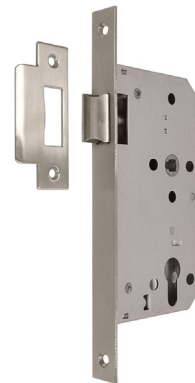


7220 MORTICE LATCH

From outside, lever handle retracts latchbolt. From inside, lever handle retracts latchbolt.

- 7220.20S** with 20x235mm square forend.
- 7220.20R** with 20x235mm radius forend.
- 7220.24S** with 24x235mm square forend.
- 7220.24R** with 24x235mm radius forend.

(Box Qty 20)



7230 MORTICE DEADLOCK

From outside, key operates deadbolt. From inside, key or thumbturn operates deadbolt. 20mm double throw deadbolt.

- 7230.20S** with 20x235mm square forend.
- 7230.20R** with 20x235mm radius forend.
- 7230.24S** with 24x235mm square forend.
- 7230.24R** with 24x235mm radius forend.

(Box Qty 20)



7250 MORTICE NIGHTLATCH

From outside, key retracts latchbolt. From inside, lever handle retracts latchbolt.

- 7250.20S** with 20x235mm square forend.
- 7250.20R** with 20x235mm radius forend.
- 7250.24S** with 24x235mm square forend.
- 7250.24R** with 24x235mm radius forend.

(Box Qty 20)

