

ANEMOSTAT FIRE RATED FUSIBLE LINK LOUVRES

ORDER SIZE & DOOR CUT-OUT

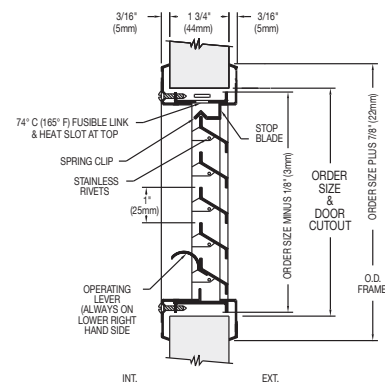
The sizes shown below are the order size and the size of the door cut-out. Other sizes are available to order from minimum size of 305 x 152mm (1206) up to maximum size of 610 x 610mm (2424). All dimensions for louvres are expressed as width x height to avoid confusion. Only complete imperial inch sizes are available i.e. 12"/305mm, 14"/356mm, 16"/406mm, 18"/457mm, 20"/508mm, 22"/559mm, 24"/610mm etc. **FRACTIONAL INCH SIZES ARE NOT AVAILABLE.**

REF	DOOR THICKNESS	SIZE IN INCHES W X H	CUT-OUT MM W X H	OUTSIDE FRAME MM
FUSIBLE LINK LOUVRE TO SUIT 44MM THICK DOORS, GALVANISED GREY PRIMED - OTHER SIZES TO SPECIAL ORDER				
FLDL 1212	44mm	12 x 12	305 x 305	327 x 327
FLDL 1810	44mm	18 x 10	457 x 254	479 x 276
FLDL 1818	44mm	18 x 18	457 x 457	479 x 479
FLDL 2020	44mm	20 x 20	508 x 508	530 x 530
FLDL 2424	44mm	24 x 24	610 x 610	632 x 632

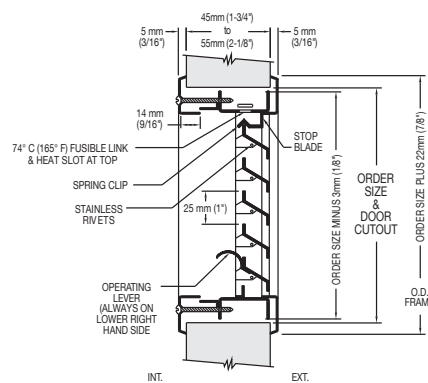
REF	DOOR THICKNESS	SIZE IN INCHES W X H	CUT-OUT MM W X H	OUTSIDE FRAME MM
EXPANDABLE FUSIBLE LINK LOUVRE TO SUIT 45-55MM THICK DOORS, GALVANISED GREY PRIMED - OTHER SIZES TO SPECIAL ORDER				
FLDL-W 1212G0	45-55mm	12 x 12	305 x 305	327 x 327
FLDL-W 1810*	45-55mm	18 x 10	457 x 254	479 x 276
FLDL-W 1818	45-55mm	18 x 18	457 x 457	479 x 479
FLDL-W 2020*	45-55mm	20 x 20	508 x 508	530 x 530
FLDL-W 2424	45-55mm	24 x 24	610 x 610	632 x 632

REF	DOOR THICKNESS	SIZE IN INCHES W X H	CUT-OUT MM W X H	OUTSIDE FRAME MM
EXPANDABLE FUSIBLE LINK LOUVRE TO SUIT 55-65MM THICK DOORS, GALVANISED GREY PRIMED - OTHER SIZES TO SPECIAL ORDER				
FLDL-W1 1212*	55-65mm	12 x 12	305 x 305	327 x 327
FLDL-W1 1810*	55-65mm	18 x 10	457 x 254	479 x 276
FLDL-W1 1818	55-65mm	18 x 18	457 x 457	479 x 479
FLDL-W1 2020*	55-65mm	20 x 20	508 x 508	530 x 530
FLDL-W1 2424	55-65mm	24 x 24	610 x 610	632 x 632

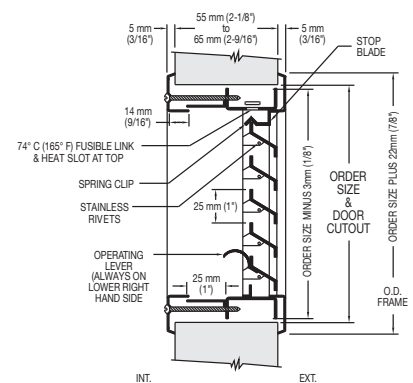
SFL	Spare fusible link
SFLS	Spare fusible link set (complete)



Standard to suit doors 44mm thick.



Expandable to suit doors 45-55mm thick.



Expandable to suit doors 55-65mm thick.

INTUMESCENT APERTURE LINER FOR FUSIBLE LINK LOUVRES ON TIMBER DOORS

Anemostat intumescent aperture liners are supplied 44mm wide to suit 30 minute fire rated doors and 54mm wide to suit 60 minute fire rated doors. They are manufactured from a mixture of mono ammonium phosphate (MAP) and graphite intumescent specifically formulated to use as a low expansion aperture liner for use with fire rated fusible link louvres on timber doors. They are not required on steel doors. The strips are 2mm thick overall and have a PSA self-adhesive backing on one side to facilitate installation. They are coloured grey. The standard length is 2500mm which is sufficient for one FLDL 2424 with a 610mm x 610mm cut-out. This intumescent has been included in a successful 30 minute fire test on a 44mm thick timber door (38 minutes actual) and a 60 minute fire test on a 54mm thick door (65 minutes actual), both to BS EN 1634-1:2008. BM TRADA Report Chilt/RF13260 refers. Copies of test report available upon request. **NO TIME CONSUMING HARDWOOD DOOR LIPPING IS REQUIRED AROUND THE APERTURE.**

REF	DESCRIPTION	BOX QTY
AL134PSA	Intumescent aperture liner, 2mm thick x 44mm wide x 2500mm long, half hour fire rated, PSA backing one side	4
AL218PSA	Intumescent aperture liner, 2mm thick x 54mm wide x 2500mm long, one hour fire rated, PSA backing one side	4

All products usually available ex-stock except those marked with *. Call for lead time. Additional manufacturers carriage charges may apply for * items. No charge for split boxes, but please try to order boxed quantity multiples where possible.