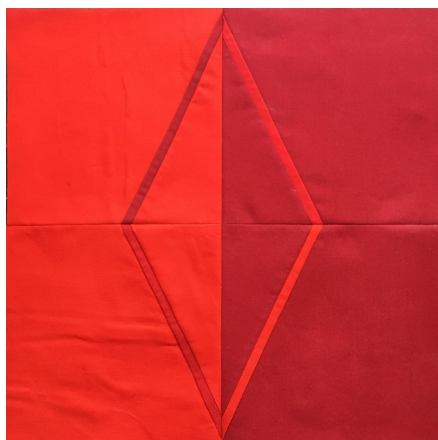


# XANADU

QUILT BLOCK PATTERN  
BY TARA J. CURTIS

**KONA®**  
**FABRIC CLUB**  
MONTHLY MONOCHROMATICS



## Share Your Block!

Share your finished Xanadu quilt block using hash tags #pileofabrickonaclub or #xanadublock and tag us at @weftynneedle and @pileoffabric.



## Supply/Fabric Requirements

- ☐ Washable school glue stick
- ☐ Flat ruler or piece of cardstock
- ☐ Clear quilting ruler or Add-A-Quarter Ruler
- ☐ Fat Eighth of Kona Cotton in Wine, Rich Red, Cardinal, and Lipstick

## Cutting the Fabric

*Cut the following pieces from your fabric and label them with sticky-notes.*

### FROM WINE (COLOR 1)

- ☐ (2) 7.5" x 7.5" label as fabric C1 & D1
- ☐ (1) 1.5" x 9" label as fabric A2
- ☐ (2) 3.5" x 8" label as fabric C3 & D3

### FROM RICH RED (COLOR 2)

- ☐ (1) 1.5" x 9" label as fabric B2

### FROM CARDINAL (COLOR 3)

- ☐ (1) 1.5" x 9" label as fabric C2

### FROM LIPSTICK (COLOR 4)

- ☐ (2) 7.5" x 7.5" label as fabric A1 & B1
- ☐ (1) 1.5" x 9" label as fabric D2
- ☐ (2) 3.5" x 8" label as fabric A3 & B3

## Preparation

### UNDERSTANDING THE PATTERN

This quilt block pattern includes instructions to create one 12" x 12" (*finished size*) **Xanadu Quilt Block** using foundation paper piecing. All seam allowances are 1/4" unless otherwise specified and instructions for pressing will be mentioned in the steps.

### PREPARING YOUR FABRIC

We strongly suggest starching and pressing your fabric with a hot iron before cutting.

### DOWNLOAD TEMPLATES & PDF

To download the block templates and PDF version of this pattern, log into to your Pile O' Fabric account and go to:

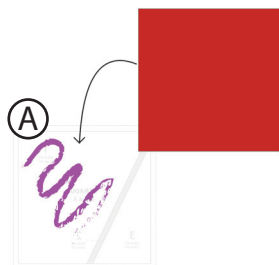
[pileoffabric.com/blogs/kona-cotton-club](http://pileoffabric.com/blogs/kona-cotton-club)

### PRINTING THE TEMPLATES

Print the pattern templates at 100% or Actual Size (do not scale or choose Fit to Page). After printing, measure the 1" guide box to be sure the templates are printed at the correct size.

## STEP 1

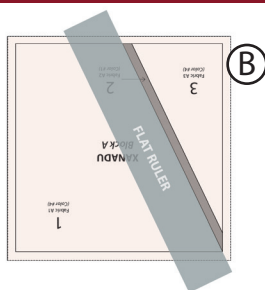
## Piecing Quarter-Blocks



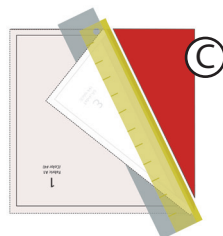
(A) Turn **Block A** template over so that the blank (wrong) side of the paper is facing up. With fabric right side up, use a glue stick to glue **A1 fabric piece** on top of area 1, completely covering area 1 with the fabric.

### FOUNDATION PAPER PIECING TIP

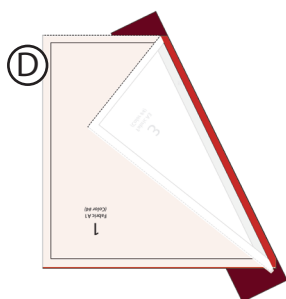
Use a size 1.5 stitch length when piecing the quarter-blocks. This will make it easier to remove the paper later.



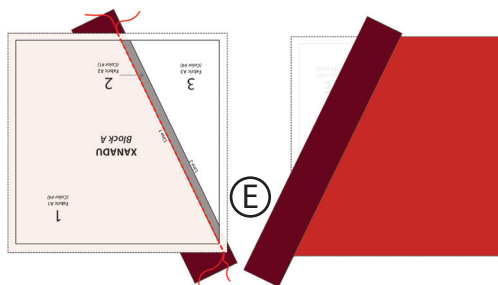
(B) Turn the paper and fabric over so that the printed side of the paper is facing up. Place a flat ruler along **Line 1** between areas 1 and 2.



(C) Fold the paper back along the flat ruler. Use another ruler on top of the fold and a rotary cutter to trim the excess fabric in the seam allowance to  $\frac{1}{4}$ ".



(D) Take **A2 fabric piece** and angle it placing it right sides together against the angled cut edge of **A1 fabric piece**.



(E) Unfold the paper and sew on **Line 1** between areas 1 and 2. Open the fabrics so that both pieces are right side up and press the seam.

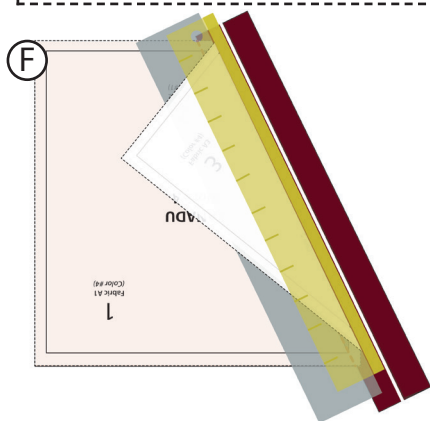
### DESIGNER SUGGESTION

"I find the **Violet Craft Seam Roller** a helpful tool when pressing seams during foundation paper piecing." — Tara J.

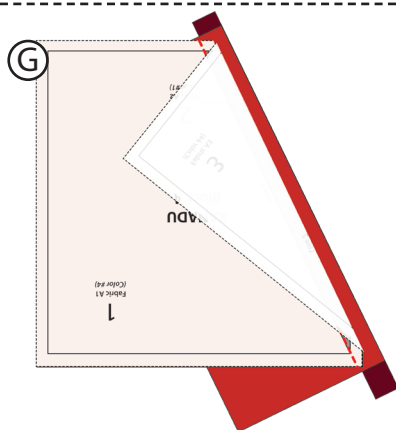
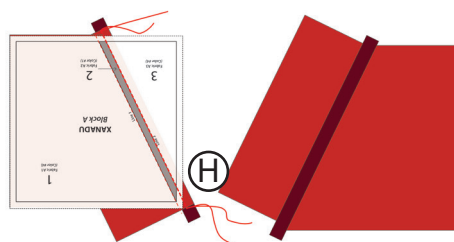
[pileofabric.com/violet-craft-seam-roller](http://pileofabric.com/violet-craft-seam-roller)

## STEP 1

## Cont. Piecing Quarter-Blocks



**(F)** Turn the paper and fabric over so that the printed side of the paper is facing up. Place the flat ruler on **Line 2** between areas 2 and 3. Fold the paper back along the flat ruler to expose **A2 fabric piece**. Place another ruler on top of the fold and use a rotary cutter to trim the excess fabric in the seam allowance to  $\frac{1}{4}$ ".



**(G)** Take **A3 fabric piece** and angle it placing it right sides together against the angled cut edge of **A2 fabric piece**.

**(H)** Unfold the paper and sew on **Line 2** between areas 2 and 3. Open the fabrics so that both pieces are right side up and press the seam.

**(I)** When **Block A** template is completely covered with fabric pieces, lay the template on a cutting mat, fabric side down (printed side of the paper facing up). Use a rotary cutter and ruler to trim the paper and fabric on the outer dashed line.

Using the same method described in all of **Step 1**, paper piece the rest of the quarter-blocks for a total of (4) blocks.

- ☐ (1) Block A
- ☐ (1) Block B
- ☐ (1) Block C
- ☐ (1) Block D

## STEP 2

## Assembling the Block

**(A)**

**(B)**

**NOTE**  
Switch back to a size 2 stitch length for all of Step 2.

**(A)** Lay quarter-blocks A and B out as shown. Sew blocks A and B together with a  $\frac{1}{4}$ " seam allowance. Press the seams open.

**(B)** Lay quarter-blocks C and D out as shown. Sew blocks C and D together with a  $\frac{1}{4}$ " seam allowance. Press the seams open.

**(C)** Sew the two columns together with a  $\frac{1}{4}$ " seam allowance. Gently remove the paper from the backside of the block. Press the seam open to make a  $12\frac{1}{2}" \times 12\frac{1}{2}"$  ( $12" \times 12"$  finished size) **Xanadu Quilt Block**.

Save the quilt block and sew it together with the other Pile O' Fabric Kona Club quilt blocks or make it into a quilt, bag, pillow sham, or whatever your heart desires!



## ABOUT THE DESIGNER TARA J. CURTIS

Tara J. Curtis is a fabric artist and craft product developer living in Madison, WI. She is the inventor of the WEFTY needle, made specifically for weaving with fabric strips. Her work has been featured in Love Quilting & Patchwork, Modern Quilts Unlimited, Sew News, and Make Modern magazines, and on the popular Sew Mama Sew blog.

**WEFTYNEEDLE.COM**

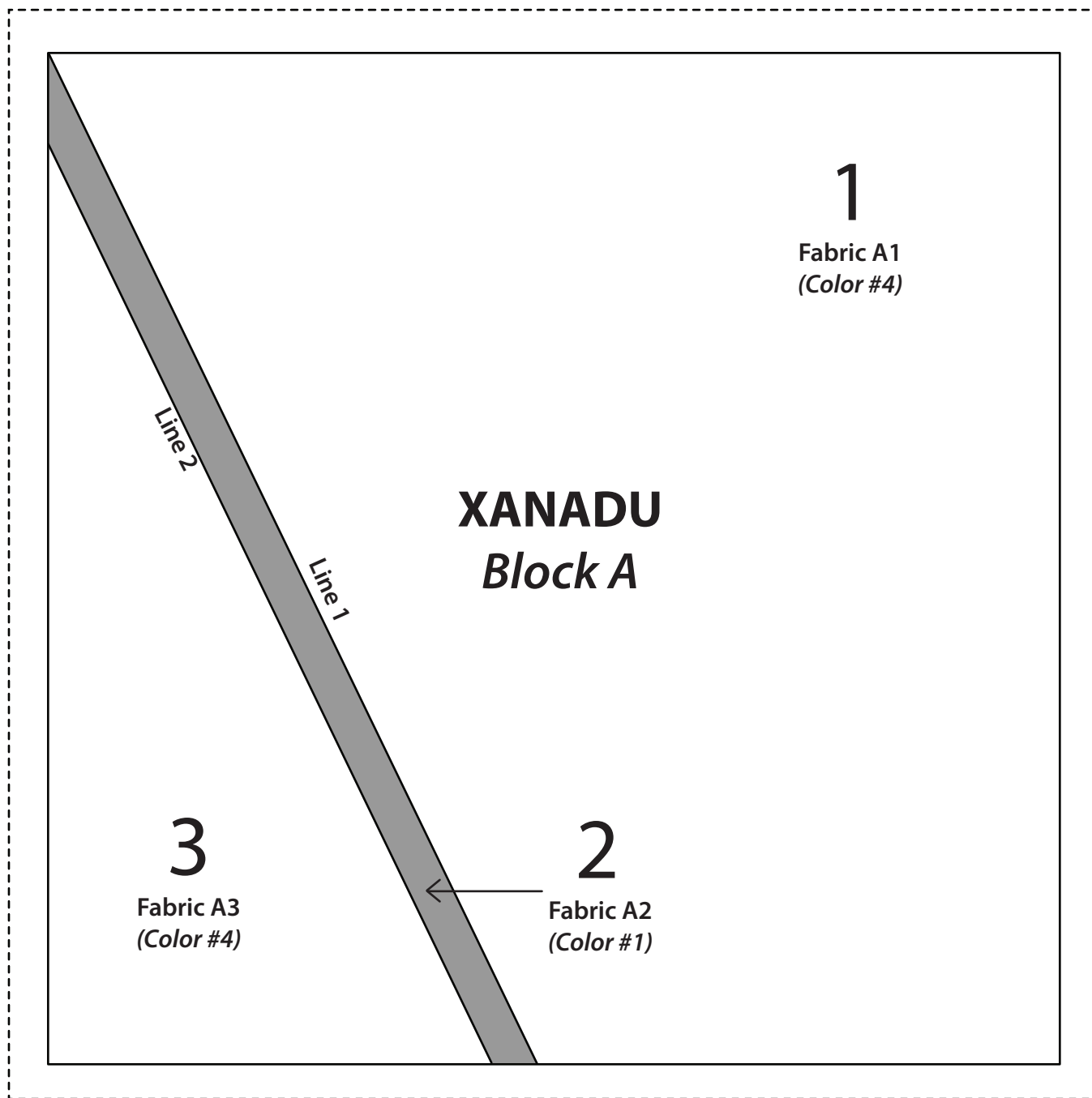
# XANADU

FOUNDATION PAPER PIECING  
*BLOCK A TEMPLATE*



wefty

Pile O' Fabric  
MODERN SEWING PATTERNS



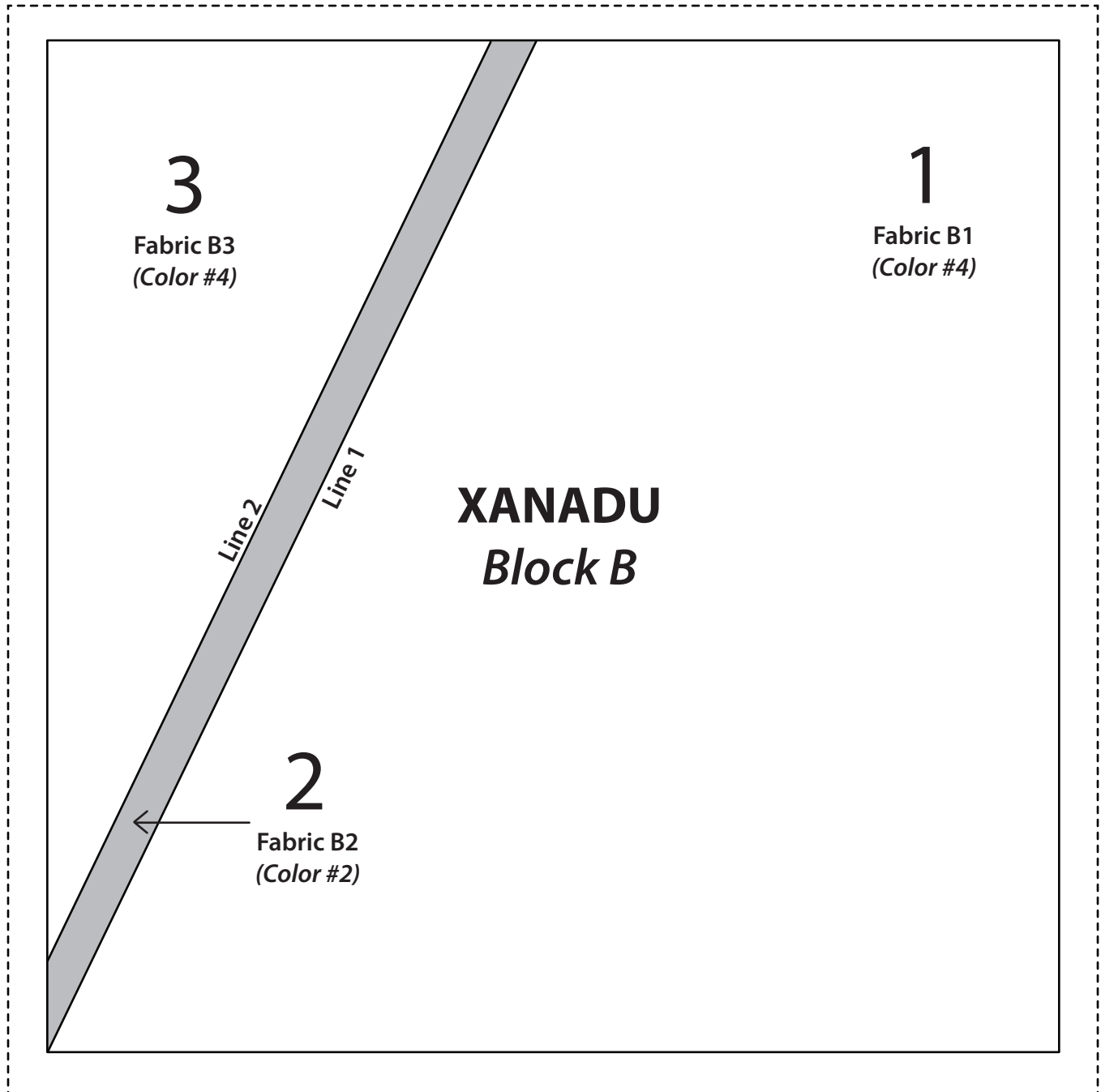
# XANADU

FOUNDATION PAPER PIECING  
*BLOCK A TEMPLATE*



wefty

Pile O' Fabric  
MODERN SEWING PATTERNS



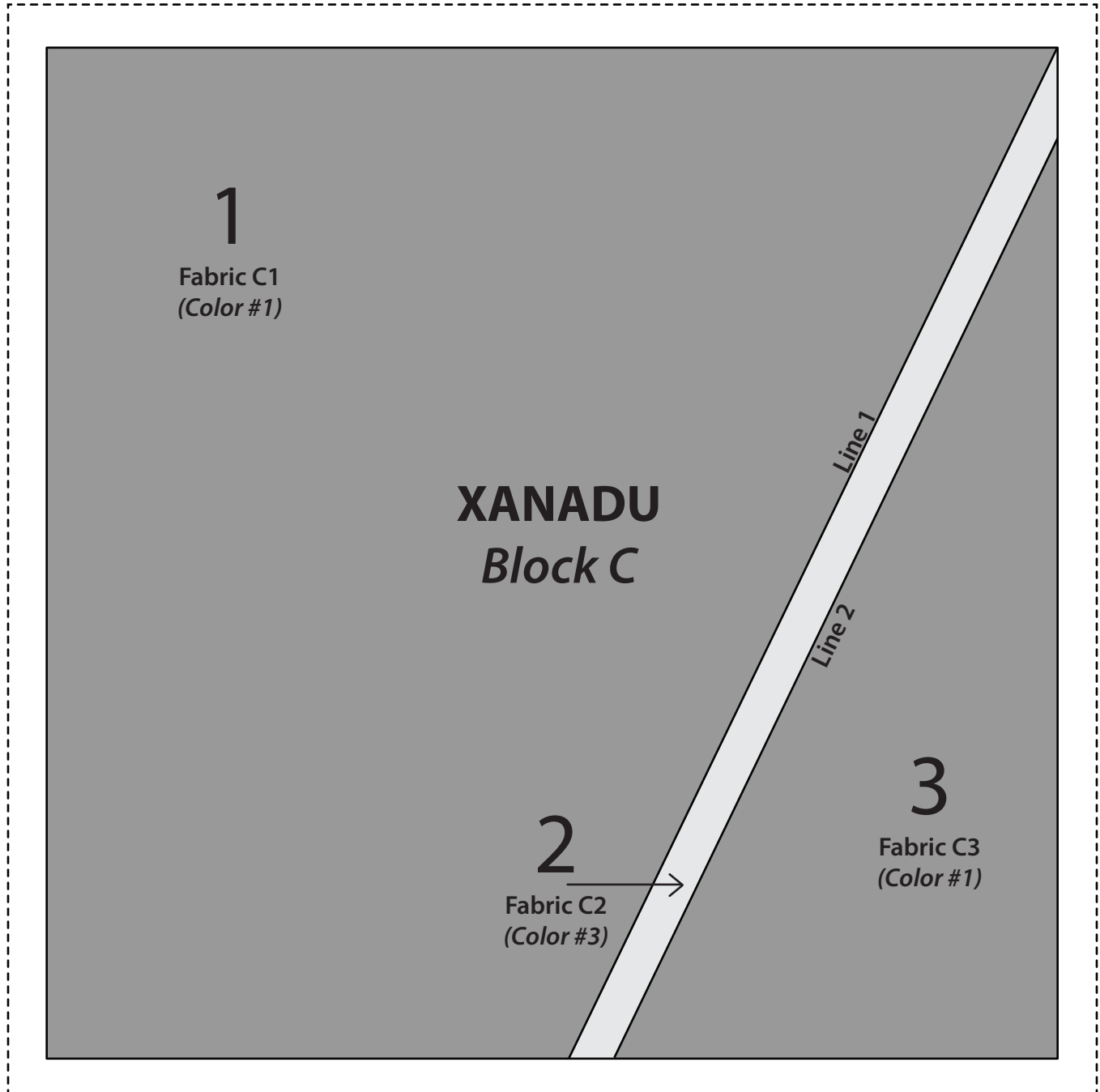
# XANADU

FOUNDATION PAPER PIECING  
*BLOCK A TEMPLATE*



wefty

Pile O' Fabric  
MODERN SEWING PATTERNS



# XANADU

FOUNDATION PAPER PIECING  
*BLOCK A TEMPLATE*



wefty

Pile O' Fabric  
MODERN SEWING PATTERNS

