

Prime Sunshine
121 Greenwich Road
#106
Charlotte, NC 28211

Certificate of Analysis

ACS LABORATORY | CANNABIS & HEMP
BEYOND COMPLIANCE

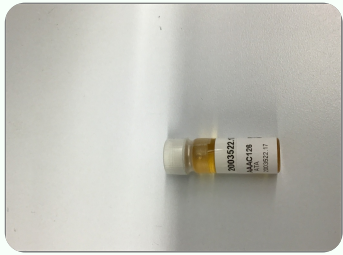
Order #: ATA200207-020012 Order Date: 2020-02-07 Collection Date: 2020-02-10 Report Date: 2020-02-18

Batch #: 2003522.17
Sample #: AAAC126
Specimen Type: CBD/HEMP Derivative Products (Ingestion)
Extracted From: Hemp
Description: 17 mg/ml CBD Gold in MCT

Initial Gross Weight: 10129mg
Density: .96665mg
Method: SOP-3



Potency Tested	Heavy Metals Passed	Pathogenic Passed
Microbiology (qPCR) Passed	Pathogenic Microbiology Passed	



The photos on this report are of a sample collected by the lab and may vary from the final packaging.

CBD Total 2.1917%	THC Total 0.0754%	CBG Total Not Detected
CBN Total Not Detected	Other Cannabinoids 0.0562%	Total Cannabinoids 2.3233%

Potency - 11 (Tested)

Potency - 11 (Tested)				(HPLC)							
Analyte	Result (mg/ml)	(%)	LOQ (%)	Analyte	Result (mg/ml)	(%)	LOQ (%)	Analyte	Result (mg/ml)	(%)	LOQ (%)
CBC	0.5431	0.0562	0.0015	CBD	19.8067	2.0490	0.0015	CBDA	1.5727	0.1627	0.0015
CBDV	<LOQ	0.0015		CBG	<LOQ	0.0015		CBGA	<LOQ	0.0015	
CBN	<LOQ	0.0015		Delta-8-THC	<LOQ	0.0015		Delta-9-THC	0.7291	0.0754	0.0015
THCA-A	<LOQ	0.0015		THCV	<LOQ	0.0015		Total CBD	21.1860	2.1917	0.0015
Total THC	0.7291	0.0754	0.0015								

*Total CBD = CBD + (CBD-A * 0.877), *Total THC = THCA-A * 0.877 + Delta 9 THC, *CBG Total = (CBGA * 0.877) + CBG, *CBN Total = (CBNA * 0.877) + CBN, *Other Cannabinoids Total = CBC + CBDV + THCV + THCV-A, *Total Detected Cannabinoids = CBD Total + CBG Total + CBN Total + THC Total + CBC + CBDV + THCV + THCV-A (mg/ml) = Milligrams per Milliliter, , LOQ = Limit of Quantitation

Xueli Gao
Xueli Gao
Ph.D., DABT Lab Toxicologist

Aixia Sun
Aixia Sun
D.H.Sc., M.Sc., B.Sc., MT (AAB) Principal Scientist

This report shall not be reproduced, without written approval, from ACS Laboratory. The results of this report relate only to the material or product analyzed. Test results are confidential unless explicitly waived otherwise. Accredited by a third-party accrediting body as a competent testing laboratory pursuant to ISO/IEC 17025 of the International Organization for Standardization.

721 Cortaro Drive P: +1 (866) 762-8379 E: info@acslabcannabis.com License No. 800025015
Sun City Center, FL - 33573 F: +1 (813) 634-4538 http://www.acslabcannabis.com CLIA No. 10D1094068

Order #: ATA200207-020012 Order Date: 2020-02-07 Collection Date: 2020-02-10 Report Date: 2020-02-18

Batch #: 2003522.17 Initial Gross Weight: 10129mg
Sample #: AAAC126 Density: .96665mg
Specimen Type: CBD/HEMP Derivative Products (Ingestion) Method: SOP-3
Extracted From: Hemp
Description: 17 mg/ml CBD Gold in MCT



Heavy Metals (Passed) (ICP-MS)

Analyte	Action Level (ppb)	Result (ppb)	LOQ (ppb)	Analyte	Action Level (ppb)	Result (ppb)	LOQ (ppb)	Analyte	Action Level (ppb)	Result (ppb)	LOQ (ppb)
Arsenic (As)	1500	<LOQ	100	Cadmium (Cd)	500	<LOQ	100	Lead (Pb)	500	<LOQ	100
Mercury (Hg)	3000	<LOQ	100								

(ppb) = Parts per Billion, (ppb) = (µg/kg), , LOQ = Limit of Quantitation

Pathogenic Microbiology #3 (HEMP Compliance Panel) (Passed) (qPCR)

Analyte	Result
Listeria Monocytogenes	Absence

Microbiology #4 (qPCR) (Passed) (qPCR)

Analyte	Remark	Analyte	Remark	Analyte	Remark
Total Aerobic Count	Passed	Total Coliform	Passed	Total Enterobacteriaceae	Passed
Total Yeast/Mold	Passed				

Xueli Gao Lab Toxicologist
Ph.D., DABT

Aixia Sun Principal Scientist
D.H.Sc., M.Sc., B.Sc., MT (AAB)

This report shall not be reproduced, without written approval, from ACS Laboratory. The results of this report relate only to the material or product analyzed. Test results are confidential unless explicitly waived otherwise. Accredited by a third-party accrediting body as a competent testing laboratory pursuant to ISO/IEC 17025 of the International Organization for Standardization.

721 Cortaro Drive
Sun City Center, FL - 33573

P: +1 (866) 762-8379
F: +1 (813) 634-4538

E: info@acslabcannabis.com
<http://www.acslabcannabis.com>

License No. 800025015
CLIA No. 10D1094068

Prime Sunshine
121 Greenwich Road
#106
Charlotte, NC 28211

Certificate of Analysis

ACS LABORATORY | CANNABIS & HEMP
BEYOND COMPLIANCE

Order #: ATA200207-020012 Order Date: 2020-02-07 Collection Date: 2020-02-10 Report Date: 2020-02-18

Batch #: 2003522.17
Sample #: AAAC126
Specimen Type: CBD/HEMP Derivative Products (Ingestion)
Extracted From: Hemp
Description: 17 mg/ml CBD Gold in MCT

Initial Gross Weight: 10129mg
Density: .96665mg
Method: SOP-3



Pathogenic Microbiology #1 (MMTC Compliance Panel) (Passed)

(Micro Array)

Analyte	Result	Analyte	Result
Salmonella	Absence	STEC E. Coli	Absence

Xueli Gao
Ph.D., DABT

Lab Toxicologist

Aixia Sun
D.H.Sc., M.Sc., B.Sc., MT (AAB)

Principal Scientist

This report shall not be reproduced, without written approval, from ACS Laboratory. The results of this report relate only to the material or product analyzed. Test results are confidential unless explicitly waived otherwise. Accredited by a third-party accrediting body as a competent testing laboratory pursuant to ISO/IEC 17025 of the International Organization for Standardization.

721 Cortaro Drive
Sun City Center, FL - 33573

P: +1 (866) 762-8379
F: +1 (813) 634-4538

E: info@acslabcannabis.com
<http://www.acslabcannabis.com>

License No. 800025015
CLIA No. 10D1094068