

**VAP** *amore*<sup>®</sup>  
THE LOVE OF STEAM

**MR500**  
VENTO™



**INSTRUCTION BOOK AND USERS GUIDE**

**Mode d'emploi et manuel de l'utilisateur**

# SAFETY INFORMATION

GO TO VAPAMORE.COM TO SEE THE MR-500 VENTO INSTRUCTIONAL VIDEO

## IMPORTANT SAFETY INSTRUCTIONS



### READ ALL INSTRUCTIONS BEFORE USING THIS APPLIANCE

When using an electrical appliance, basic precautions should always be followed, including the following

### SAVE THESE INSTRUCTIONS

**Warning -** To reduce the risk of fire, electric shock, or injury:

**Warning -** This vacuum is for household use only.

**Warning -** To reduce the risk of electrical shock, this appliance has a polarized plug (one blade is wider than the other). This plug will fit in a polarized outlet only one way. If the plug does not fit fully in outlet, reverse the plug. If it still does not fit, contact a qualified electrician to install the proper outlet. Do not change the plug in any way.

1. Do not leave appliance when plugged in. Unplug from outlet when not in use and before servicing.

2. This vacuum has a cord reel. Hold the plug when rewinding onto the cord reel. Do not allow plug to whip when rewinding.

3. Use only as described in this manual.

4. Do not unplug by pulling on the cord. To unplug, grasp the plug, not the cord.

5. Do not use with a damaged cord or plug. If the supply cord and/or plug is damaged, they must be replaced by Vapamore in order to prevent a fire hazard.

6. Do not pull or carry by the cord, use the cord as a handle, allow the cord to come into contact with hot or sharp surfaces or close a door on the cord.

7. Do not handle plug or appliance with wet hands.

8. Only carry the vacuum by the handle.

9. Do not pull or drag the vacuum using the vacuum hose and gun handle.

10. Turn off all controls before unplugging.

11. Do not use an extension cord.

12. Do not attempt to remove blockages with sharp objects as they may cause damage.

13. Store indoors, put away after use to prevent tripping accidents. Use extra care when cleaning stairs.

14. Using improper voltage may result in damage and possible

15. A hazard may occur if the vacuum runs over the power supply cord.

16. Never immerse the vacuum in water or other liquids.

17. Always turn off this appliance before connecting or disconnecting either hose or motorized nozzle.

18. The hose contains electrical wires. Do not use if damaged, cut, punctured. Avoid picking up sharp objects.

19. Use only the supplied accessories with this vacuum.

20. This vacuum has powerful suction capability. Do not allow it to be used as a toy and always maintain close attention when used near children.

21. Keep the vacuum away from rain and moisture. Do not use outdoors or on wet surfaces.

22. Do not use on wet surfaces. This is NOT a wet dry vacuum and cannot be used to extract water or liquids.

23. Change filter bag, Hepa filter, and motor filter when dirty. Failure to change or clean these filters will cause poor performance and may cause failure. Do not use without dust bag or filters.

24. Keep hair, loose clothing, fingers, and all parts of the body away from openings and moving parts.

25. Do not use to pick up flammable or combustible liquids such as gasoline or use in areas where they may be present. Do not pick up anything that is burning or smoking such as cigarettes, matches, or hot ashes.

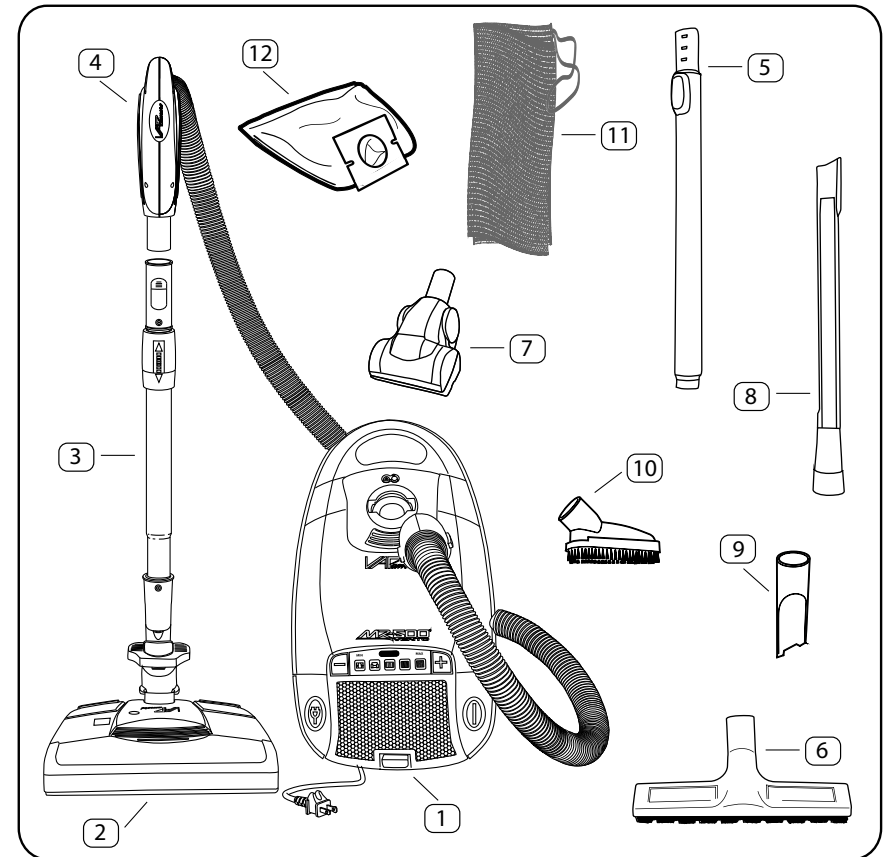
26. Vacuum has an internal thermal protector to prevent overheating if a large item or clog gets caught in the nozzle or at the dust bag opening. If the blockage is not removed and cleared the vacuum will stop running. If this happens, turn off and unplug the vacuum. Disconnect the vacuum hose and remove and clear the obstruction. Once the thermal protector cools (approx 30 min) the vacuum will function as normal. If the vacuum does not restart contact Vapamore for technical service.

27. If the vacuum is not working as it should, has been dropped, damaged, left outdoors, or dropped into water, return it to Vapamore for repairs.

28. Do not put any objects into openings. Do not use with any

# PARTS OVERVIEW

GO TO VAPAMORE.COM TO SEE THE MR-500 VENTO INSTRUCTIONAL VIDEO



## PARTS LIST

- 1 MR-500 Vento
- 2 Electric floor head
- 3 Extension pole / electric floor head
- 4 Gun and hose assembly
- 5 Extension pole / non electric tools
- 6 Non electric floor head
- 7 Small detail floor head
- 8 Long reach crevis tool
- 9 Small crevis tool
- 10 Detail brush tool
- 11 Accessories storage bag
- 12 Dust bag x 6

## TECHNICAL SPECIFICATIONS

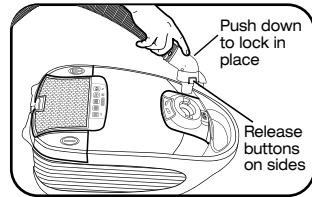
Model: MR-500 Vento  
Power supply: 120 V - 60 Hz - 12A  
Vacuum Motor: 1200W  
Electric Floor Brush: 200W  
Vacuum: 20Kpa  
Air Flow: 30L Per Second  
Hose Length: 1.5M - 5Ft  
Dust Capacity: 4L - 135.25 Oz  
Power cord length: 8M - 26Ft  
Gross weight: 12 Kg - 26 Lb

# ASSEMBLING THE MR-500 VENTO

GO TO VAPAMORE.COM TO SEE THE MR-500 VENTO INSTRUCTIONAL VIDEO

Included accessories: The Vapamore MR-500 Vento has both an electric floor head with a switch operated electric rotating brush to be used for carpets and rugs plus a non electric floor head used for hard surface floors. Also included are a variety of non electric tools to be used on multiple surfaces and applications. The electric floor head is used with the electric extension pole only and the non electric floor head and tools are to be used with the non electric extension pole or directly with the hose handle.

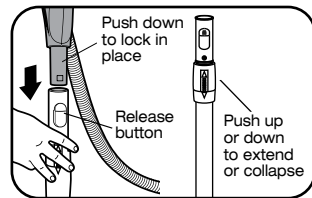
Fig.1



## VACUUM HOSE AND HANDLE

With the hose pointed towards the rear of the vacuum, push the hose connector into the vacuum inlet. A click will confirm its locked into place. To remove the connector push in the release buttons located on both sides of the connector and pull up to release. NOTE: The hose contains electrical wires and should not be used if damaged or if wires are exposed in any way through the outer shielding. Fig.1

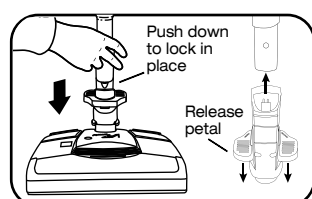
Fig.2



## ELECTRIC EXTENSION POLE AND FLOOR HEAD

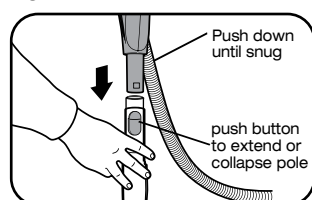
Attached the hose handle into the electric extension pole by pushing the handle into the pole. A click will confirm its locked into place. To remove the handle push in the release button and pull upward. To extend or collapse the extension pole, push downward or pull upward as directed by the arrows on the extension handle. Fig. 2

Fig.3



The electric floor head is attached in the same manner by pushing the electric extension pole into the floor head. Be sure the electric floor head is locked in place. To remove the electric floor head, place one foot on the release pedal and pull up on the electric extension pole to release. Fig. 3

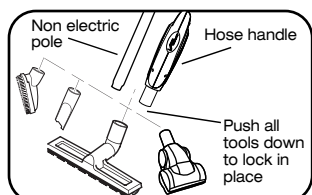
Fig.4



## NON ELECTRIC EXTENSION POLE, FLOOR HEAD AND TOOLS

Attached the hose handle into the non electric extension pole by firmly pushing the handle into the non electric extension pole. The handle is a firm slip fit into the pole. Push the button to extend and collapse the extension pole. Fig. 4

**The non electric hard surface floor head and all tools can be used with the non electric extension pole or directly to the hose handle.** The non electric hard surface floor head and all tools are attached in the same manner by pushing the non electric extension pole or hose handle firmly into the non electric hard surface floor head or chosen tool. NOTE: The small detail floor head is vacuum powered using the force of the vacuum to rotate the internal brush. Fig. 5

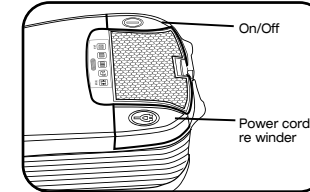


# USING YOUR MR-500 VENTO

GO TO VAPAMORE.COM TO SEE THE MR-500 VENTO INSTRUCTIONAL VIDEO

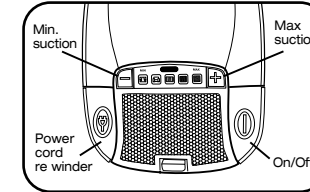
## OPERATION

Fig. 6



Once you have assembled the vacuum, pull the power cord out and plug into a standard outlet. Never pull the power cord past the marked stop point as this may damage the auto re winder. Retract the power cord by pressing the petal until the cord is fully rewound. Fig. 6-7

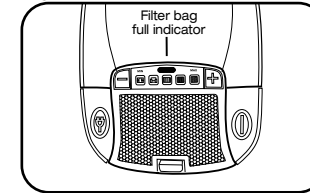
Fig. 7



Turn the vacuum on by pressing the on/off petal. To turn the vacuum off press the petal again. Fig. 6-7

Once the vacuum is turned on you can adjust the variable suction settings by pushing the plus (+) or minus (-) buttons located on each side of the control panel. This allows you to adjust for low suction for delicate surfaces like drapery all the way to the maximum suction for deep carpets. **When vacuuming rugs use a setting 1 to 2 under maximum as most rugs have rubber backing and will not allow the vacuum to breath properly.** Using to high of a setting on rubber backed or flow restricted areas can damage the vacuum motor or drive belt. Fig. 7

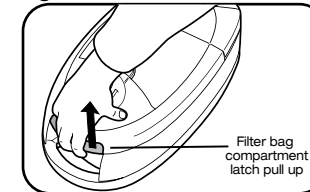
Fig. 8



## FILTER BAG

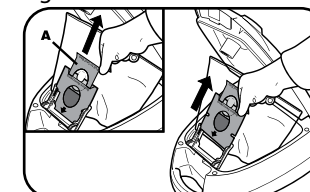
The filter bag full indicator light will turn red when the filter bag is full and needs replacing. There are three conditions that will cause the indicator light to come on. 1, The filter bag is full and needs to be replaced. 2, Very fine powder has clogged the pores in the filter bag even if not completely full it must be replaced. 3, There is a clog in the nozzle, hose, tools, or at the filter bag opening that must be cleared. Note: The filter bag full indicator is designed to notify the user when the filter bag is full. If the filter bag is full of pet hair, carpet fibers, or any loose light fibers the bag full indicator may not light up due to sufficient air flow in the filter bag. Discard the full filter bag and replace with a new one. Fig. 8

Fig. 9



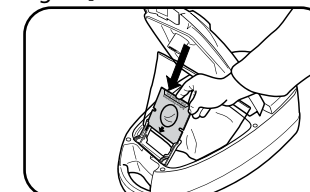
The filter bag must be maintained to keep the vacuum operating at maximum efficiency. Change the filter bag frequently or when the filter bag full indicator comes on.

Fig. 10



To replace the filter bag, first disconnect the vacuum hose from the vacuum by depressing the two buttons on each side of the hose connector. Then lift the filter bag compartment latch and open the lid. Fig. 9

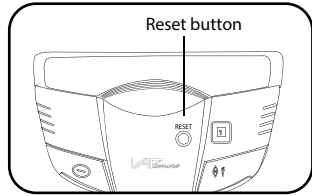
Fig. 11]



Before removing the filter bag pull on the tab "A" to seal the filter bag and keep dust from escaping as the filter bag is changed. Then pull the filter bag out and discard. Fig. 10

Replace with a new filter bag by sliding the bag into the bag retainer in the direction of the arrow located on the filter bag. Once the filter bag is in place, close the lid. Fig. 11

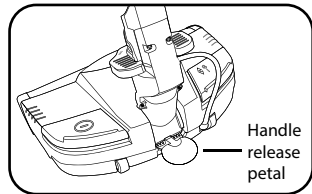
Fig. 12



**ELECTRIC FLOOR HEAD**

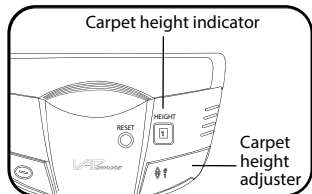
The electric floor head has a reset button located on top of the floor head. This protection feature is designed to turn off the floor head in case of a jam in the rotating brush. If the floor head turns off, clear the jam in the rotating brush and push the reset button. If the floor head does not start contact Vapamore service at 480-951-8900. Fig. 12

Fig. 13



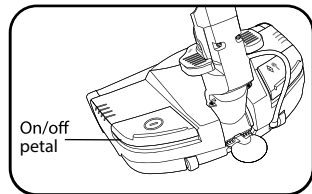
There are two handle positions for the electric floor head, upright/stored and operating. When in the upright/stored position the handle is locked into place. To lower the handle to the operating position, push the handle release pedal. Fig. 13

Fig. 14



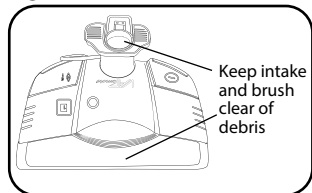
The carpet height adjuster has a range of 1-6 and is adjusted in according to the surface being cleaned. **Always adjust going up (1 up to 6) until you reach the desired setting.** When adjusting down (6 down to 1) the adjuster is designed to skip numbers to return to 1 faster. Adjust by depressing the foot pedal located on the rear of the floor head. Fig. 14

Fig. 15



Turn on the electric floor head by pushing the on/off pedal. This allows the user to turn on and off the rotating brush depending on the surface being cleaned. If cleaning rugs or carpet turn on the rotating brush. If cleaning hard surface flooring you can turn off the rotating brush. Make sure the brush is in the off setting before turning the vacuum on. Fig. 15

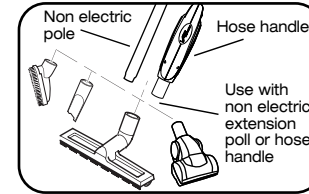
Fig. 16



Always check to make sure the rotating brush is clear and free of any pet hair or debris. Remove and clean any built up debris from the rotating brush. Also make sure the electric floor head intake opening is free and clear of any debris. A clogged intake will reduce the vacuum efficiency and also can trigger the full filter bag indicator. Fig. 16

Note: The rotating brush uses a special designed drive belt. In the case that the drive belt should break due to over stress or a brush jam, contact Vapamore for service at 480-951-8900 or visit vapamore.com to order a replacement drive belt.

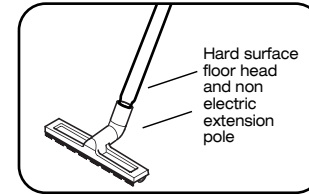
Fig. 17



**NON ELECTRIC FLOOR HEAD & TOOLS**

Your MR-500 Vento comes with a variety of non electric tools used for more detailed jobs. These tools include a hard surface floor head, rotating small detail floor head, long reach crevice tool, small crevice tool and a detail brush tool. All these attachments can be used with the non electric extension pole or direct to the hose handle. Fig. 17

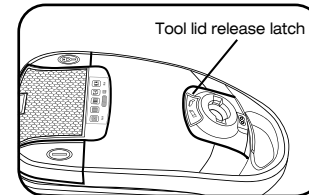
Fig. 18



**HARD SURFACE FLOOR HEAD**

The hard surface floor head is used with the non electric extension pole and is for use on hardwood, stone, cement, tile, or any hard surface flooring. Fig. 18 (Store this tool in the mesh storage bag.)

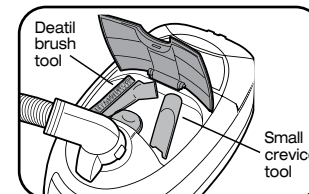
Fig. 19



**SMALL DETAIL FLOOR HEAD**

The small detail floor head has a vacuum powered rotating brush and is great for tight areas, stairs, auto interior and furniture. This tool can be used with the non electric extension pole or direct to the hose handle. Fig. 17 (Store this tool in the mesh storage bag.)

Fig. 20

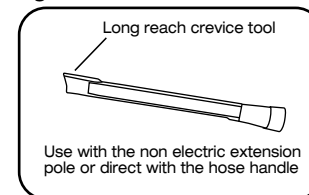


**SMALL CREVICE TOOL & DETAIL BRUSH TOOL**

The small crevice tool and a detail brush tool are stored in the vacuum located under the tool lid. Push the tool lid release latch to open the tool lid. Fig. 19-20 **The small detail brush separates by snapping off and removing the brush section to make a flat surface tool.**

The small crevice tool and a detail brush tool are great for smaller jobs and hard to reach areas such as furniture, under appliances, vents and screens, auto, boat and RV's. These tools can be used with the non electric extension pole or direct to the hose handle. Fig. 17

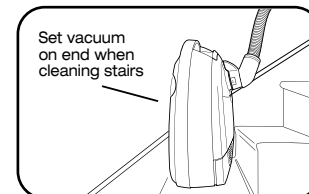
Fig. 21



**LONG REACH CREVICE TOOL**

The long reach crevice tool is great for hard to reach areas such as between furniture cushions, under appliances, air duct vents, auto, boat and RV's. This tool can be used with the non electric extension pole or direct to the hose handle. Fig. 21 (Store this tool in the mesh storage bag.)

Fig. 22



**USING ON STAIRS**

When using to clean stairs, place the vacuum on end and clean stairs from the bottom up using the large electric floor head, small detail floor head, or detail brush. Fig. 22

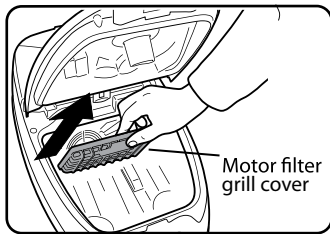
# MAINTENANCE AND STORAGE

GO TO VAPAMORE.COM TO SEE THE MR-500 VENTO INSTRUCTIONAL VIDEO

## MAINTENANCE

Besides regularly changing the dust collection bag as covered earlier under "Using your MR-500 Vento" there are other maintenance items that must be done to ensure maximum performance and life of your vacuum. These include cleaning or replacing the vacuum motor filter, the HEPA filter and clearing any blockages in the hose, gun or tools.

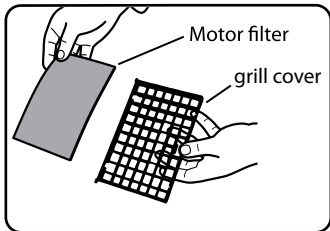
Fig. 23



### VACUUM MOTOR FILTER

The motor filter is located behind the grill in the dust bag compartment. It protects the motor from dirt particles. If the filter becomes dirty, pull the grill off and lift out the filter. Replace with a new filter available at [vapamore.com](http://vapamore.com) or by calling Vapamore at 480-951-8900. Do not operate without the motor filter in place. Neglecting this filter may void the motor warranty. Fig. 23-24

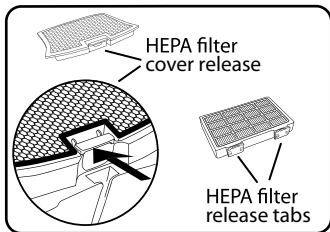
Fig. 24



### HEPA FILTER

The HEPA filter aids in the filtration process to return clean filtered air into the room. Make sure to always replace the HEPA filter as needed or at a minimum annually to keep maximum filtration. To replace the filter, open the filter cover by pressing on the filter cover release tab, remove the HEPA filter by releasing the two tabs that secure the filter in place. Replace the filter then replace cover. Fig. 25

Fig. 25

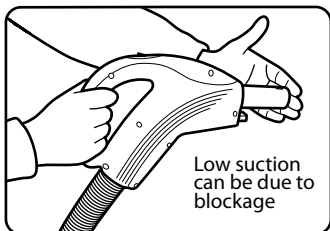


### BLOCKAGE

Low suction or poor pick up can be due to a blockage or restriction in the hose, handle, extension poles, floor heads or tools. Check each part until the blockage or restriction is found and cleared.

With the vacuum on check the hose handle inlet for proper suction. If suction is low at the handle inlet, clear the restriction in the hose handle, hose, hose socket, dust filter bag inlet, or change the filter bag. If the suction is 100% at the hose handle inlet then the blockage or restriction could be located in the extension poles, floor heads, or tools. Locate and clear any found blockage or restriction. Fig. 26

Fig. 26



**ALWAYS DISCONNECT THE VACUUM FROM THE ELECTRICAL OUTLET BEFORE ANY SERVICE OR MAINTENANCE WORK.**

Contact Vapamore at 480-951-8900 or [info@vapamore.com](mailto:info@vapamore.com) for any technical questions, user information or service issues.

# TROUBLESHOOTING

GO TO VAPAMORE.COM TO SEE THE MR-500 VENTO INSTRUCTIONAL VIDEO

## PROBLEM?

**What do I do if the machine or an accessory becomes damaged or broken?**

Visit [www.vapamore.com](http://www.vapamore.com) for a complete list of parts and accessories available for purchase or simply call us at 480-951-8900 or E-mail us at [info@vapamore.com](mailto:info@vapamore.com) to purchase replacement parts or schedule a repair. **WE ARE HERE TO HELP...**

**⚠ IMPORTANT : Do not return to the place of purchase for warranty or repairs. Only Vapamore is authorized to facilitate all repairs to keep the highest quality and ETL standards. Repairs or tampering by any other party will void the lifetime Warranty.**

## TROUBLESHOOTING

**PROBLEM:** Vacuum does not turn on.

**Cause:** The vacuum is not plugged into a socket.

**Solution:** Insert the main plug into a socket.

**Cause:** The socket is faulty.

**Solution:** Check the socket by unplugging the vacuum and plugging in a different appliance.

**Cause:** The thermal protector has been triggered due to a blockage in the hose, hose handle, floor head, accessory tool, or dust bag opening. Any major restriction will cause the vacuum to overheat and the thermal protector will trip and turn the vacuum off.

**Solution:** In this case you must unplug the vacuum, remove the blockage and let the vacuum sit unplugged. Within 30 minutes the thermal protector will cool and reset. If the vacuum does not restart, call us at 480-951-8900 or E-mail us at [info@vapamore.com](mailto:info@vapamore.com) for repair

**Cause:** One of the ETL protection devices has been triggered or the power cord has been damaged.

**Solution:** Call us at 480-951-8900 or E-mail us at [info@vapamore.com](mailto:info@vapamore.com) to schedule a repair.

**PROBLEM:** Vacuum has little to no suction.

**Cause:** There is a blockage in the hose, hose handle, floor head, accessory tool, dust bag opening, full dust bag or dirty motor filter.

**Solution:** See sections titled, BLOCKAGE, FILTER BAG, VACUUM MOTOR FILTER.

**PROBLEM:** Electric floor head will not turn on or brush does not turn.

**Cause:** Hose connection is bad, thermal protector is tripped, switch is in the off setting, or the drive belt is damaged or worn.

**Solution:** Make sure the hose is plugged into the socket and the handle properly. Allow the vacuum to cool per the "thermal protector section". Make sure the foot switch is in the on setting. Contact Vapamore for help replacing the drive belt at 480-951-8900 or E-mail [info@vapamore.com](mailto:info@vapamore.com).

QUESTIONS? WE ARE HERE TO HELP.

CONTACT US FOR HELP AT 480-951-8900 OR E-MAIL US AT [INFO@VAPAMORE.COM](mailto:INFO@VAPAMORE.COM)



*Lifetime Limited Warranty for the  
Vapamore MR-500 Vento*

(Overview and terms of the Limited Lifetime Warranty)

Coverage:

1: Lifetime parts and labor on the vacuum motor, electric brush motor and all internal electronics. The Vapamore MR-500 Vento vacuum motor, electric brush motor and all internal electronic parts are lifetime warranted to be free from defects in material and workmanship when utilized by the original purchaser only. This warranty does not cover damage due to misuse, abuse or lack of care including not changing the dust bag, Hepa filter or motor filter. Also damage due to clogs or restrictions in the vacuum lines are not covered.

2: One (1) year parts and labor on accessories and housing.

The Vapamore MR-500 Vento accessories and housing are warranted to be free from defects in material and workmanship for a period of one (1) year from the date of purchase when utilized by the original purchaser only. This does not include replacement of items due to wear including but not limited to the Electric Floor Brush, Detail Brush, Hard surface brush, Detail Tool, Hepa Filter, Motor Filter or Dust Bags.

For this warranty to apply the original purchaser must return the warranty registration form (included in the original packaging or available online at vapamore.com) along with a copy of the original purchase receipt to Vapamore 7464 East Tierra Buena Ln Suite 108 – Scottsdale, AZ 85260 within 15 days after the original purchase date.

Should any defect covered by the terms of this lifetime limited warranty be discovered, Vapamore will repair or replace any defective part provided the unit is returned by the original purchaser on file with the warranty form information.

The liability under this warranty is limited solely to the cost of the replacement parts or the complete unit at the discretion of Vapamore. This warranty is void if damage is resulting from accident, misuse, improper operation, unauthorized repair or alteration, tampering, not changing the dust bag, Hepa filter or motor filter or damages accruing in transit. This warranty does not cover any shipping fees to or from our facility.

This warranty is extended to the original purchaser only and excludes all other legal and / or conventional warranties. The responsibility of Vapamore, if any is limited to the specific obligations expressly assumed by it under the terms of the lifetime limited warranty. In no event is Vapamore liable for incidental or consequential damages of any kind whatsoever.

Customer is responsible for all shipping fees to and from our facility. Carefully pack returning items for repair to avoid damage in transit. Failure to do so will void this warranty. Be sure to include in the box all your contact information including name, phone number, e-mail address and shipping address along with a prepaid return ship tag from UPS or Fed Ex. Vapamore does not ship and will not accept items sent via USPS. Contact Vapamore at 480-951-8900 or e-mail customersupport@vapamore.com for making arrangements to return items for repair or service. Vapamore is not responsible for any shipping cost to or from our facility.

**Vapamore®**  
tel. 480.951.8900 / fax. 480.951.8902  
www.vapamore.com



Vapamore  
7464 E. Tierra Buena Lane Suite 108  
Scottsdale, AZ 85260